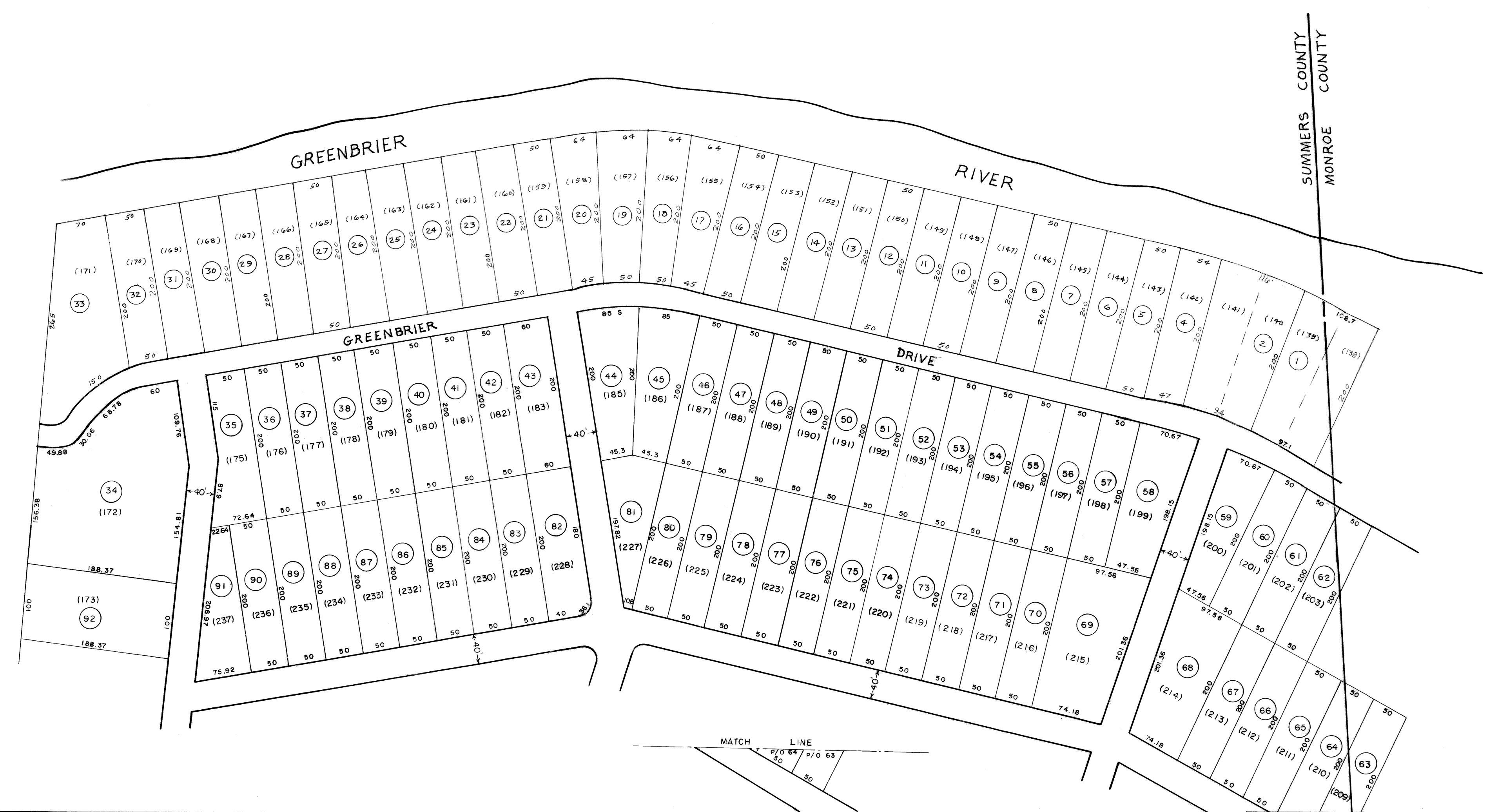


- 93 Lot 302 - 60' x 175'
- 94 Lot 303 - 60' x 175'
- 95 Lot 304 - 60' x 175'
- 96 Lot 305 - 60' x 175'
- 97 Lot 306 - 100' x 175'
- 98 Lot 307 - 60' x 175'

NOTE: There is not a map on record covering the area of Wolf Crk. Property Lots that includes Lots 302 thru 307, although all of these lots have been conveyed and are assessed.



GREENBRIER RIVER ESTATES  
 .... Lots 136 THRU 171  
 (Also Lots 101 THRU 137 in Monroe County)

Lots of WOLF CREEK CORP. PROPERTY  
 .... Lots 172 THRU 203  
 .... Lots 209 THRU 237  
 .... Lots 302 THRU 307  
 (Also Lots 204 THRU 208 in Monroe County)



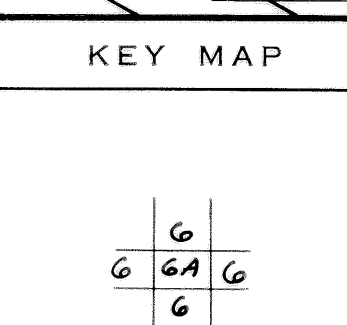
For Tax Purposes Only  
 Prepared by  
 ASSESSMENT EQUALIZATION DIV.  
 STATE TAX COMMISSIONER  
 CHARLESTON, W.VA.

LEGEND	
Property line	—
Edge of pavement or roadway	—
Corporation line	—
District line	—
County line	—
Original lot line	(15)
Deed lot number	(99)
Parcel or index number	○
Improvement	○
Railroad	—

REVISIONS	
1	9/11/72 JHP
2	8-31-78 BAH
3	Revised to 7-1-87 JHP
4	
5	
6	
7	
8	

RESTRICTION

All tax maps created under the provisions of reappraisal legislation are the property of the State of West Virginia and the reproduction, copying, distribution or sale of such tax maps or any copies thereof without the written permission of the State Tax Commissioner is prohibited by law.



SUMMERS COUNTY ~ WEST VIRGINIA

Office of Assessor

TALCOTT DISTRICT

City - Town - District:

Map No: **6A**

Date, Aerial Photography: 9/11/72  
 Photo No: 1" = 100'