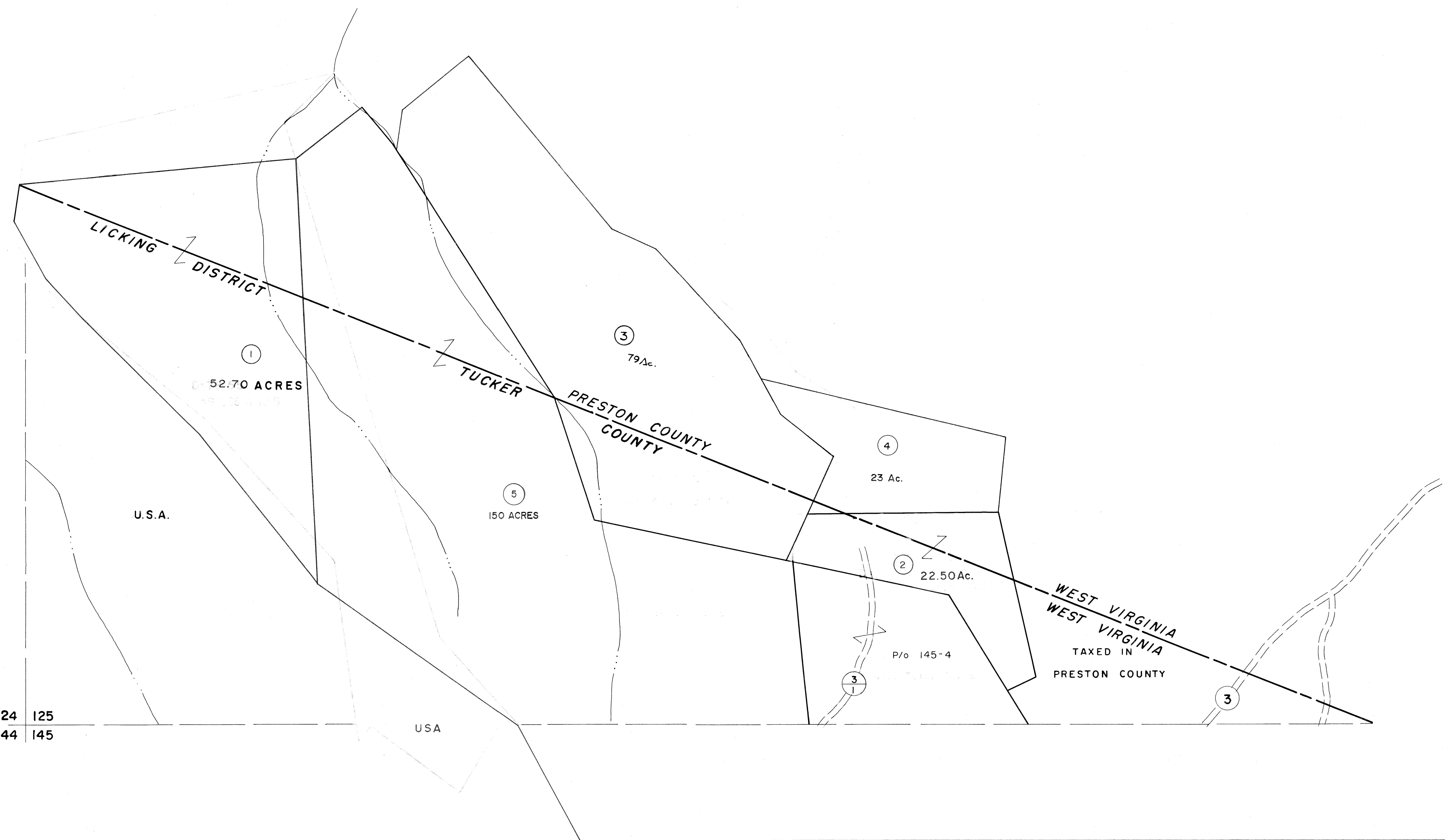


124 | 125

125 |



124 | 125
144 | 145

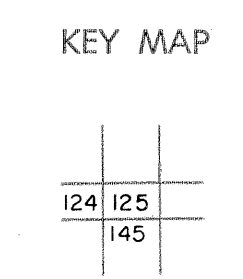
125 |
145 | 146

For Tax Purposes Only

Prepared by
MICHAEL BAKER, JR., INC.
Consulting Engineers
Rochester, Pennsylvania

Legend	
Property line	Original lot line
Edge of pavement or roadway	Dead lot number (15)
Corporation line	Parcel or index number (99)
District line	Improvement (o)
County line	Railroad

Revisions	
1	11/14/78 D.G. SLS INC. - DDC 5/97
2	Revised to 7-1-84 L.E.S.
3	7-1-84 L.E.S.
4	Revised to 7-1-87 D.G.
5	OGIS 12/29/90 DSH
6	OGIS 1/23/93 DSH
7	OGIS 12/9/93 SAJ
8	



TUCKER COUNTY
STATE OF WEST VIRGINIA
Office of Assessor

DISTRICT	LICKING
SHEET NO:	125
Date, Aerial Photography:	November, 1961
Date, Map:	Dec, 1962
Photo No:	Scale: 1" = 400'