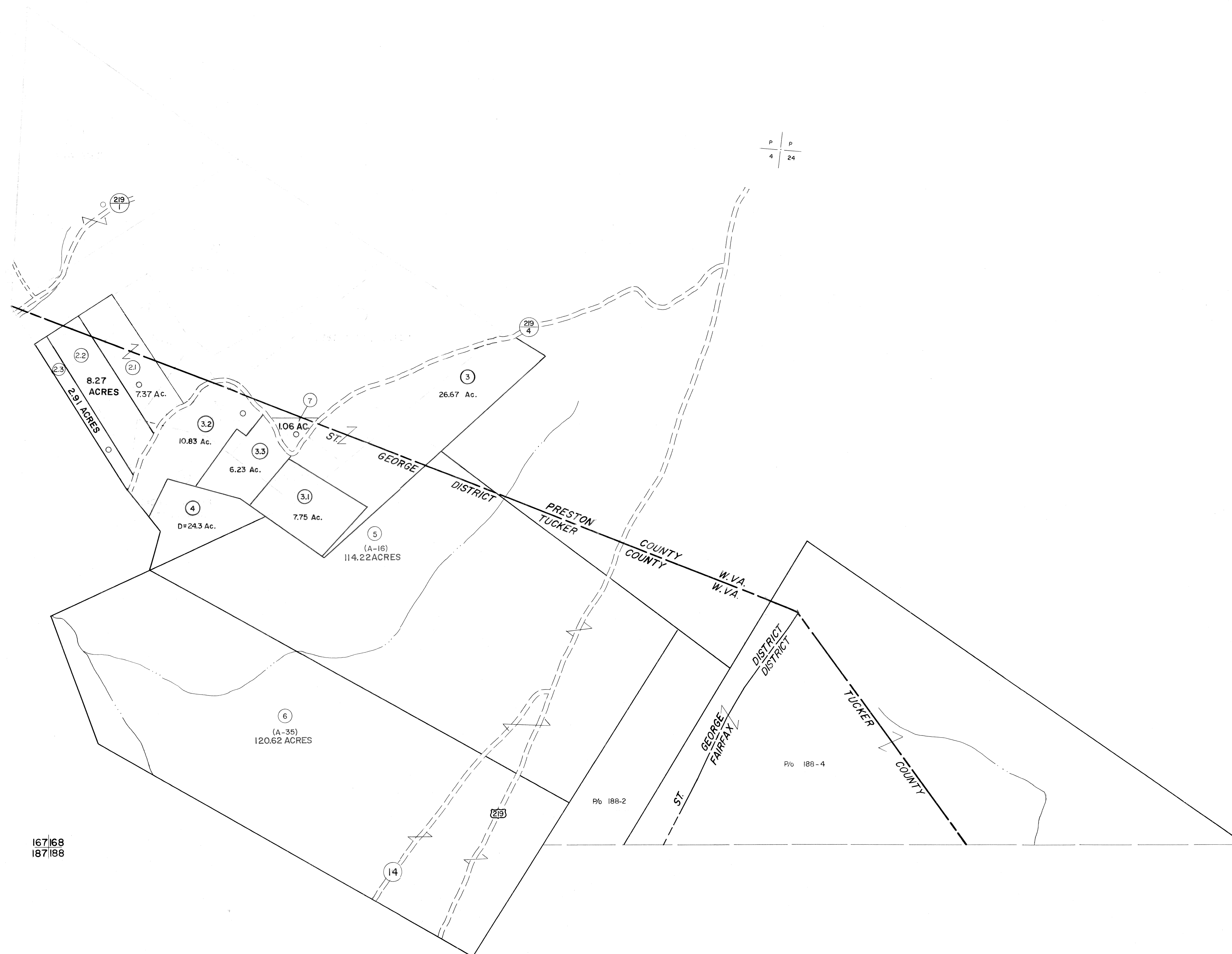


147  
167 168

168



167 168  
187 188

168

188 189

For Tax Purposes Only

Prepared by  
MICHAEL BAKER, JR., INC.  
Consulting Engineers  
Rochester, Pennsylvania

Legend

Property line	---	Original lot line	---
Edge of pavement or roadway	---	Deed lot number	(15)
Corporation line	---	Parcel or index number	(29)
District line	---	Improvement	o
County line	---	Railroad	+

Revisions

1	11/17/78	DSH	9	3/26/07	S&H	17
2	REVISED TO 7-1-83		10			18
3	REV. TO 7-1-86	NCS	11			19
4	REV. TO 3-1-89	NCS	12			20
5	OGIS 12/30/90	DSH	13			21
6	OGIS 3-19-92	TL	14			22
7	OGIS 1/24/93	DSH	15			23
8	O.G.I.S. 4-1-96	J.E.B.	16			24

KEY MAP



TUCKER COUNTY

STATE OF WEST VIRGINIA

Office of Assessor

DISTRICT

ST. GEORGE  
FAIRFAX

SHEET NO: 168

Date, Aerial Photography: November, 1961 Date, Map: Dec., 1962  
Photo No: Scale: 1" = 400'