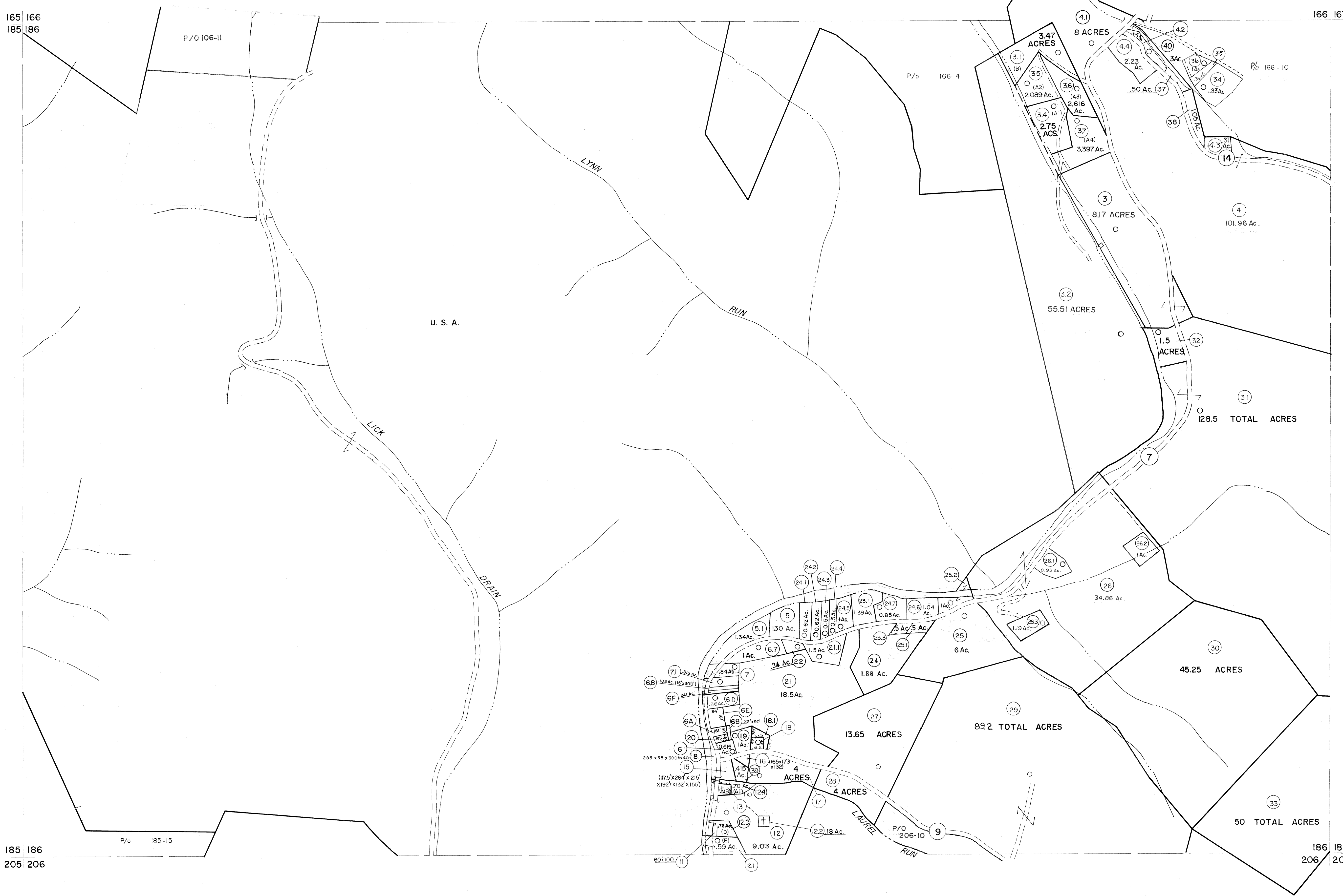


165 166  
185 186

166 167

185 186  
205 206

186 187  
206 207



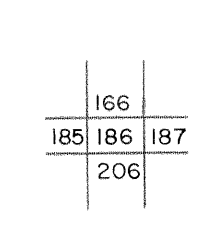
Legend

Property line	—————	Original lot line	-----
Edge of pavement or roadway	—————	Deed lot number	(15)
Corporation line	—————	Parcel or index number	(20)
District line	—————	Improvement	o
County line	—————	Railroad	—+—

Revisions

1	10-3-63	9	OGIS 12/30/90	DSH	17	SLS INC. 1/27/99	DSW
2	6-3-64	10	OGIS 3-19-92	TL	18	SLS INC. 3/1/00	JWM
3	6-3-78	11	OGIS 1/25/93	DSH	19	ESI 1/31/01	REK
4	11/20/78	12	OGIS 12/11/93	SAJ	20	H&S 2/22/04	
5	To JULY 1, 1983 C.P.	13	OGIS 2-95	HD	21	3/24/07	S&H
6	Revised 10-7-85	14	O.G.I.S 4-1-96	J.E.B	22		
7	REV. TO 7-1-86	15	SLS INC. - DDC	5/97	23		
8	REV. TO 3-1-89	16	SLS INC.	2/19/98	24		

KEY MAP



**TUCKER COUNTY**  
STATE OF WEST VIRGINIA  
Office of Assessor

DISTRICT **ST. GEORGE**

SHEET NO: 186

Date, Aerial Photography: November, 1961 Date, Map: Dec, 1962  
Photo No: Scale: 1" = 400'

For Tax Purposes Only  
Prepared by  
**MICHAEL BAKER, JR., INC.**  
Consulting Engineers  
Rochester, Pennsylvania