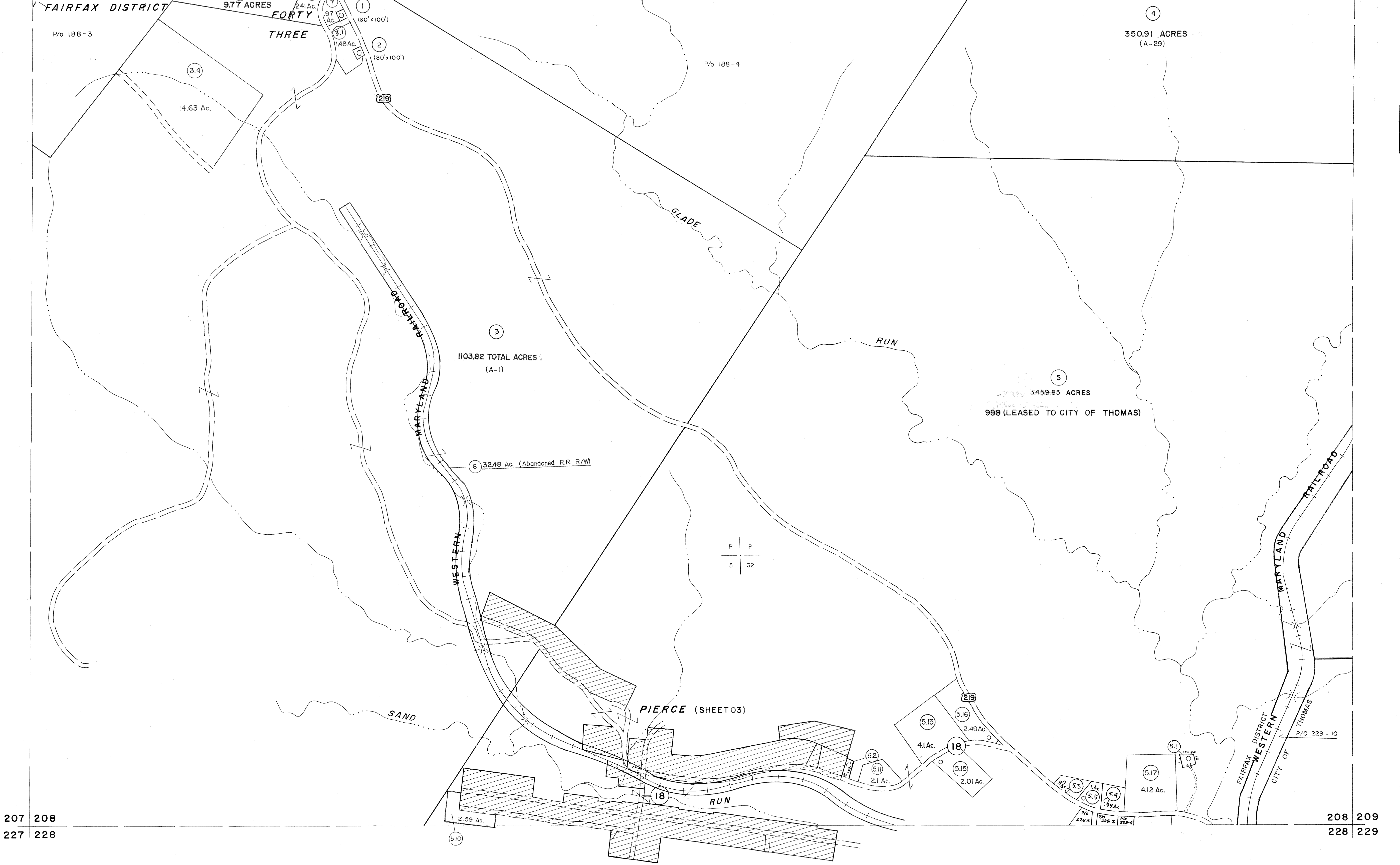


187 188
207 208

188 189
208 209



207 208
227 228

208 209
228 229

For Tax Purposes Only

Prepared by
MICHAEL BAKER, JR., INC.
Consulting Engineers
Rochester, Pennsylvania

Legend	
Property line	—
Edge of pavement or roadway	—
Corporation line	—
District line	—
County line	—
Original lot line	- - - -
Deed lot number	(15)
Parcel or index number	(99)
Improvement	o
Railroad	—

Revisions					
1	JUNE 75	P.A.V.	9	SLS INC. 2/23/98	JWM 17 3/28/06 S & H
2	11/20/78	D.G.	10	SLS INC. 1/27/99	DSW 18
3	REV. TO 7-1-86	N.C.S.	11	SLS INC. 3/1/00	JWM 19
4	REV. TO 3-1-89	R.E.B.	12	ESI 1/31/01	REK 20
5	O.G.I.S 3-19-92	T.L.	13	ESI 2/7/02	REK 21
6	O.G.I.S 2-95	H.D.	14	ESI 2/20/03	REK 22
7	O.G.I.S 4-1-96	J.E.B.	15	H.B.S 2/22/04	
8	SLS INC. - DDC 5/97		16	S & H	3/21/05 24

KEY MAP

TUCKER COUNTY
STATE OF WEST VIRGINIA
Office of Assessor

DISTRICT **FAIRFAX**

SHEET NO: **208**

Date, Aerial Photography: Nov., 1961 Date, Map: Dec, 1962
Photo No: Scale: 1" = 400'