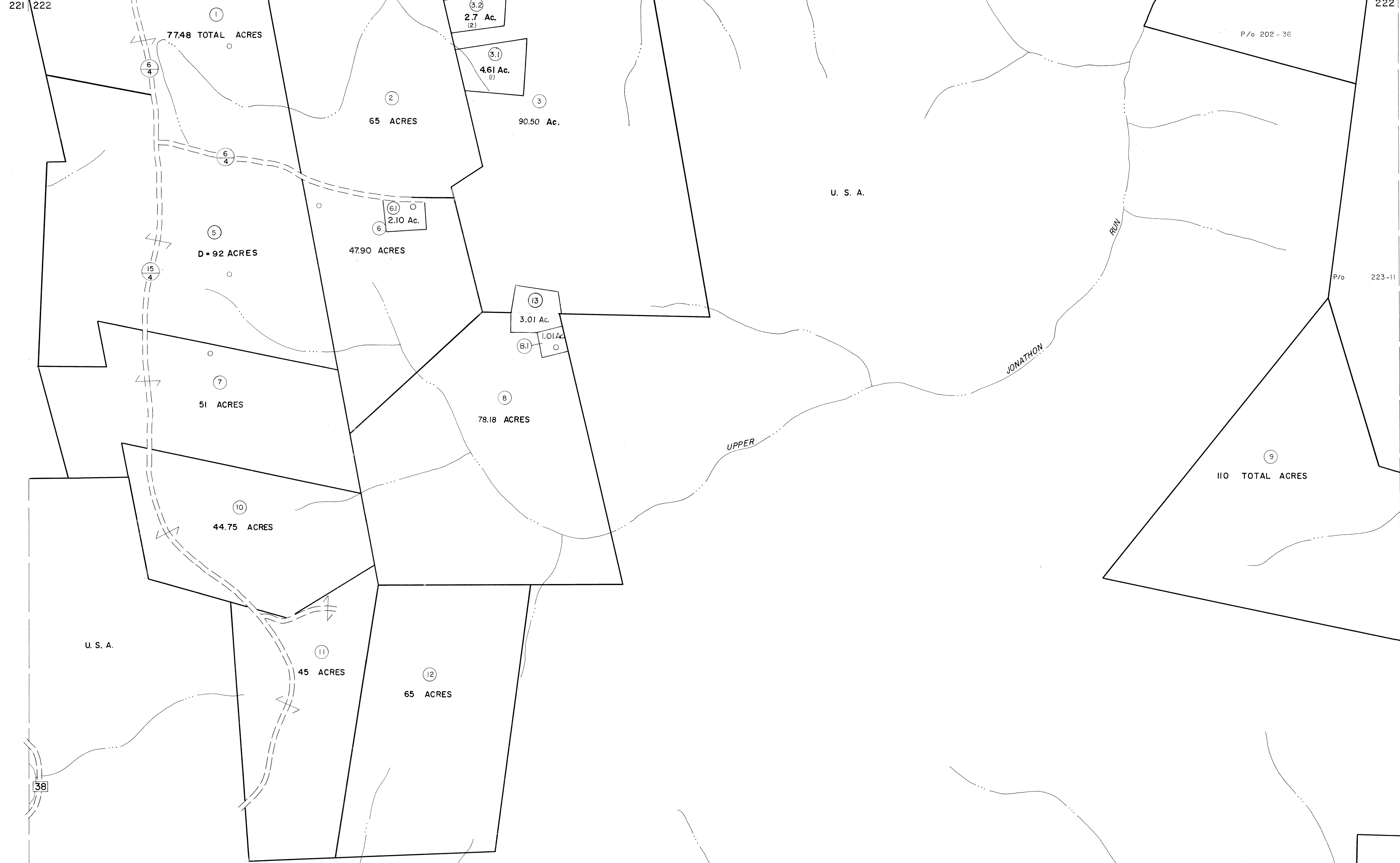


201 202
221 222

202 203
222 223

221 222
241 242

222 223
242 243



For Tax Purposes Only
 Prepared by
MICHAEL BAKER, JR., INC.
 Consulting Engineers
 Rochester, Pennsylvania

| Legend | |
|-----------------------------|------------------------|
| Property line | Original lot line |
| Edge of pavement or roadway | Deed lot number |
| Corporation line | Parcel or index number |
| District line | Improvement |
| County line | Railroad |

| Revisions | | | |
|-----------|---------------------|--------|----|
| 1 | July 1978 | RS | 9 |
| 2 | 7-1-84 | L.E.S. | 10 |
| 3 | REV. TO 3-1-89 | R.E.B. | 11 |
| 4 | OGIS 1/25/93 | DSH | 12 |
| 5 | OGIS 12/11/93 | SAJ | 13 |
| 6 | OGIS 2-95 | HD | 14 |
| 7 | SLS INC. - DDC 5/97 | | 15 |
| 8 | | | 16 |

KEY MAP

TUCKER COUNTY
 STATE OF WEST VIRGINIA
 Office of Assessor

DISTRICT **CLOVER**
SHEET NO: 222
 Date, Aerial Photography: November, 1961 Date, Map: Dec, 1962
 Photo No: Scale: 1" = 400'