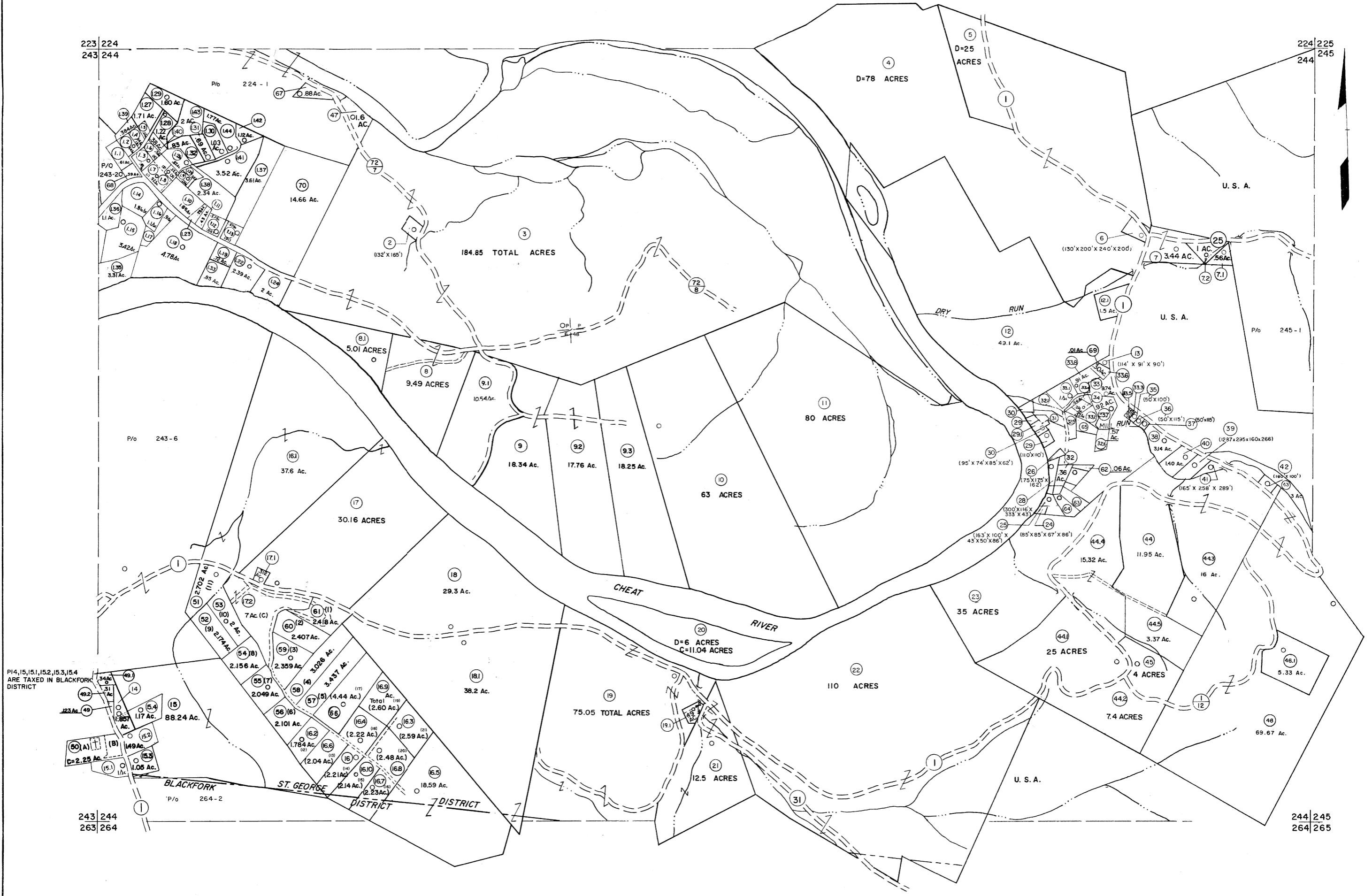


223 224  
243 244

224 225  
244 245



P/4, 15, 15.1, 15.2, 15.3, 15.4  
ARE TAXED IN BLACKFORK  
DISTRICT

**For Tax Purposes Only**  
  
Prepared by  
**MICHAEL BAKER, JR., INC.**  
Consulting Engineers  
Rochester, Pennsylvania

Legend	
Property line	Original lot line
Edge of pavement or roadway	Deed lot number
Corporation line	Parcel or index number
District line	Improvement
County line	Railroad

Revisions	
1	10-3-63
2	6-3-64
3	6-3-75
4	11/21/78
5	7-1-84
7	REV. TO 7-1-86
9	REV. TO 3-1-88
11	OGIS 12/31/90
12	OGIS 3-19-92
13	OGIS 1/25/93
14	OGIS 12/11/93
15	OGIS 2-95
16	O.G.I.S 4-1-96
17	SLS INC. - DDC 5/97
18	SLS INC. 2/23/98
19	SLS INC. 1/27/99
20	SLS INC. 3/1/00
21	ESI 1/31/01
22	ESI 2/8/02
23	ESI 2/20/03
24	H&S 2/19/04

3/21/05	S&H
3/28/06	S&H
KEY MAP	
3/24/07	S&H
6-22-08	H&S
5-28-10	H&S
224	
243 244 245	
264	

**TUCKER COUNTY**  
STATE OF WEST VIRGINIA  
Office of Assessor

DISTRICT **ST. GEORGE BLACKFORK**  
**SHEET NO: 244**  
Date, Aerial Photography: November, 1961 Date, Map: Dec, 1962  
Photo No: Scale: 1" = 400'