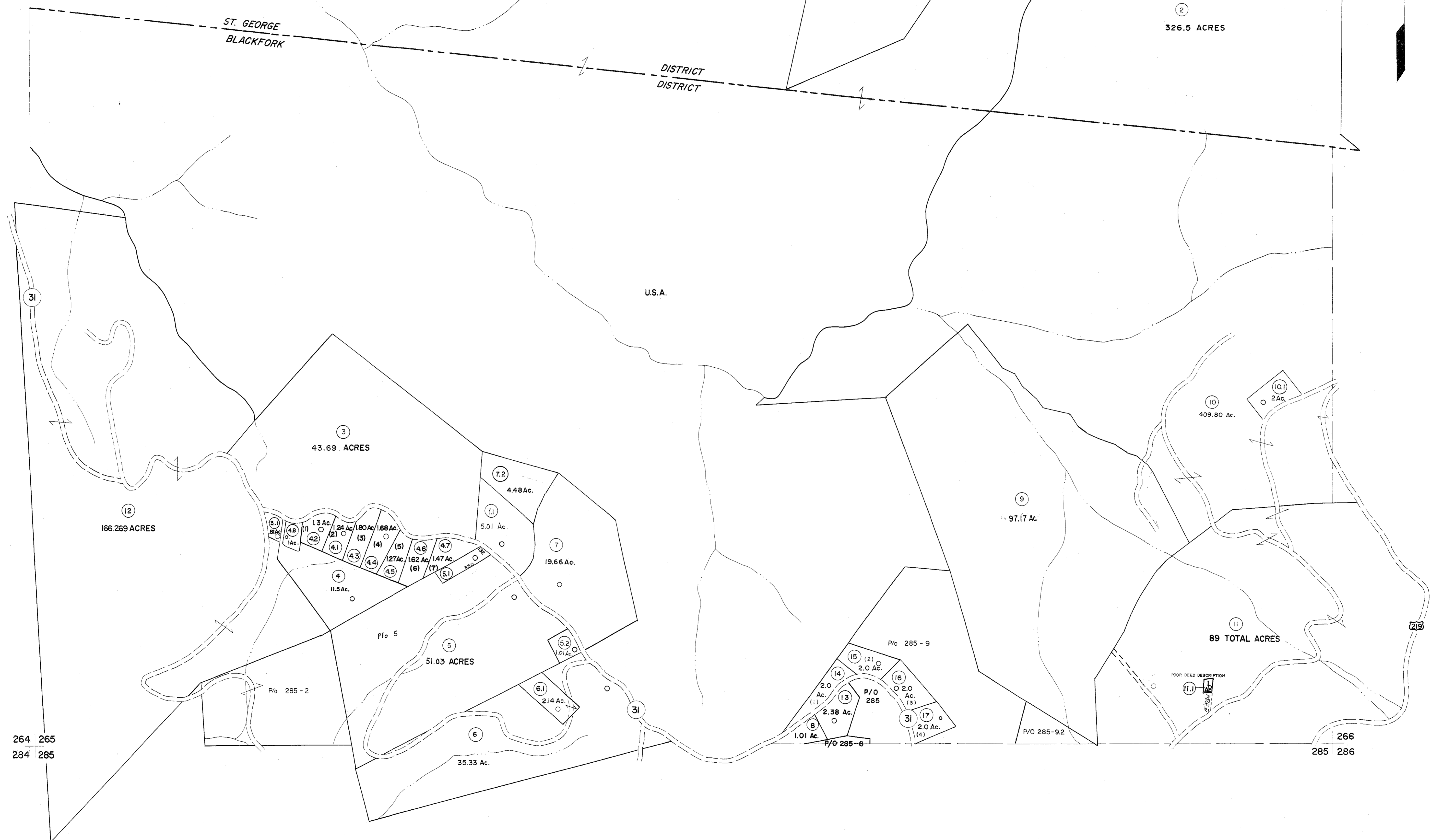


244 245
264 265

245 246
265 266



264 265
284 285

266
285 286

For Tax Purposes Only

Prepared by
MICHAEL BAKER, JR., INC.
Consulting Engineers
Rochester, Pennsylvania

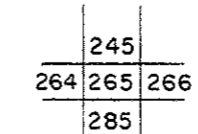
Legend

Property line	—————	Original lot line	—————
Edge of pavement or roadway	—————	Deed lot number	(15)
Corporation line	—————	Parcel or index number	(99)
District line	—————	Improvement	○
County line	—————	Railroad	—+—+—+—

Revisions

1	6-4-75	T.G.	9	SLS INC.	1/27/99	DSW	17	5/28/15	S&H
2	11-27-78	T.G.	10	ESI	1/31/01	REK	18		
3	Revised 12-1-83	DSH	11	HBS	2/19/04		19		
4	OGIS	1/1/91	12		6-22-02	HH.S	20		
5	OGIS	3-19-92	13		6-21-04	HH.S	21		
6	OGIS	12/12/93	14		6/24/11	S&H	22		
7	O.G.I.S	4-1-96	15	J.E.B	5-4-13	HH.S	23		
8	SLS INC.	- DDC	16		5/97		24		

KEY MAP



TUCKER COUNTY
STATE OF WEST VIRGINIA
Office of Assessor

DISTRICT
**BLACKFORK
ST. GEORGE**

SHEET NO: 265

Date, Aerial Photography: November, 1961 Date, Map: Dec., 1962
Photo No: Scale: 1" = 400'