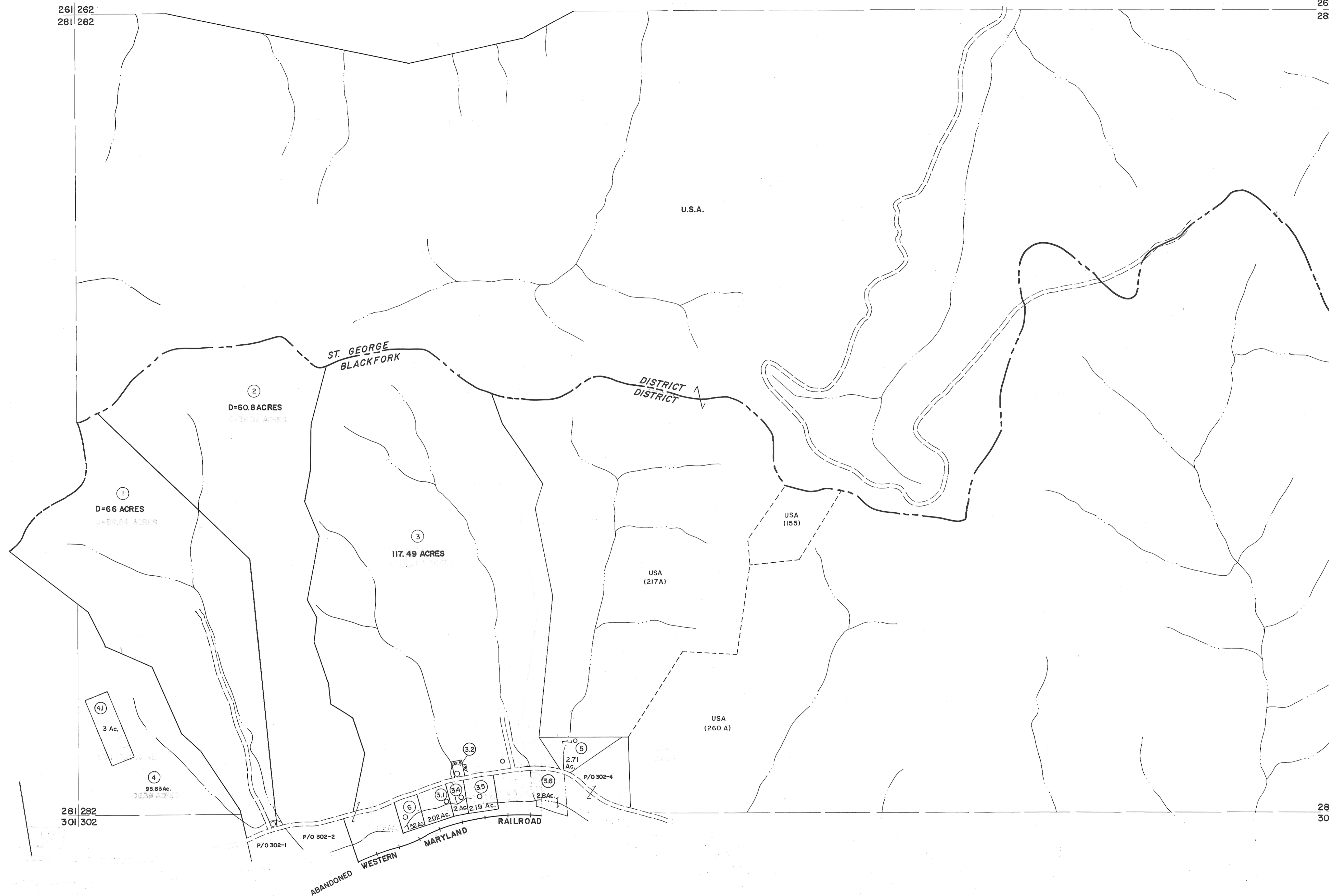


261 262  
281 282

262 263  
282 283



281 282  
301 302

282 283  
302 303

**For Tax Purposes Only**

Prepared by  
**MICHAEL BAKER, JR., INC.**  
Consulting Engineers  
Rochester, Pennsylvania

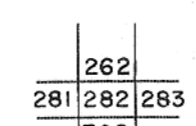
**Legend**

Property line	—————	Original lot line	—————
Edge of pavement or roadway	—————	Dead lot number	(15)
Corporation line	—————	Parcel or index number	(20)
District line	—————	Improvement	○
County line	—————	Railroad	—————

**Revisions**

1	6-4-75	T.G.	9	ESI	1/31/01	REK	17
2	Revised to 7-1-88-2		10	ESI	2/8/02	REK	18
3	REV TO 3-1-89	REB.	11	ESI	2/20/03	REK	19
4	OGIS 3-19-92	TL	12	3/24/07	SBH	20	
5	OGIS 1/27/93	DSH	13	6-22-08	HAS	21	
6	OGIS 12/12/93	SAJ	14	6-21-09	HAS	22	
7	SLS INC. 2/23/98	JWM	15	7/4/11	SBH	23	
8	SLS INC. 3/2/00	JWM	16	5-4-13	HAS	24	

**KEY MAP**



**TUCKER COUNTY**  
STATE OF WEST VIRGINIA  
Office of Assessor

DISTRICT **BLACKFORK**  
**ST. GEORGE**

**SHEET NO: 282**

Date, Aerial Photography: November, 1961 Date, Map-Dec. 1962  
Photo No: Scale: 1" = 400'