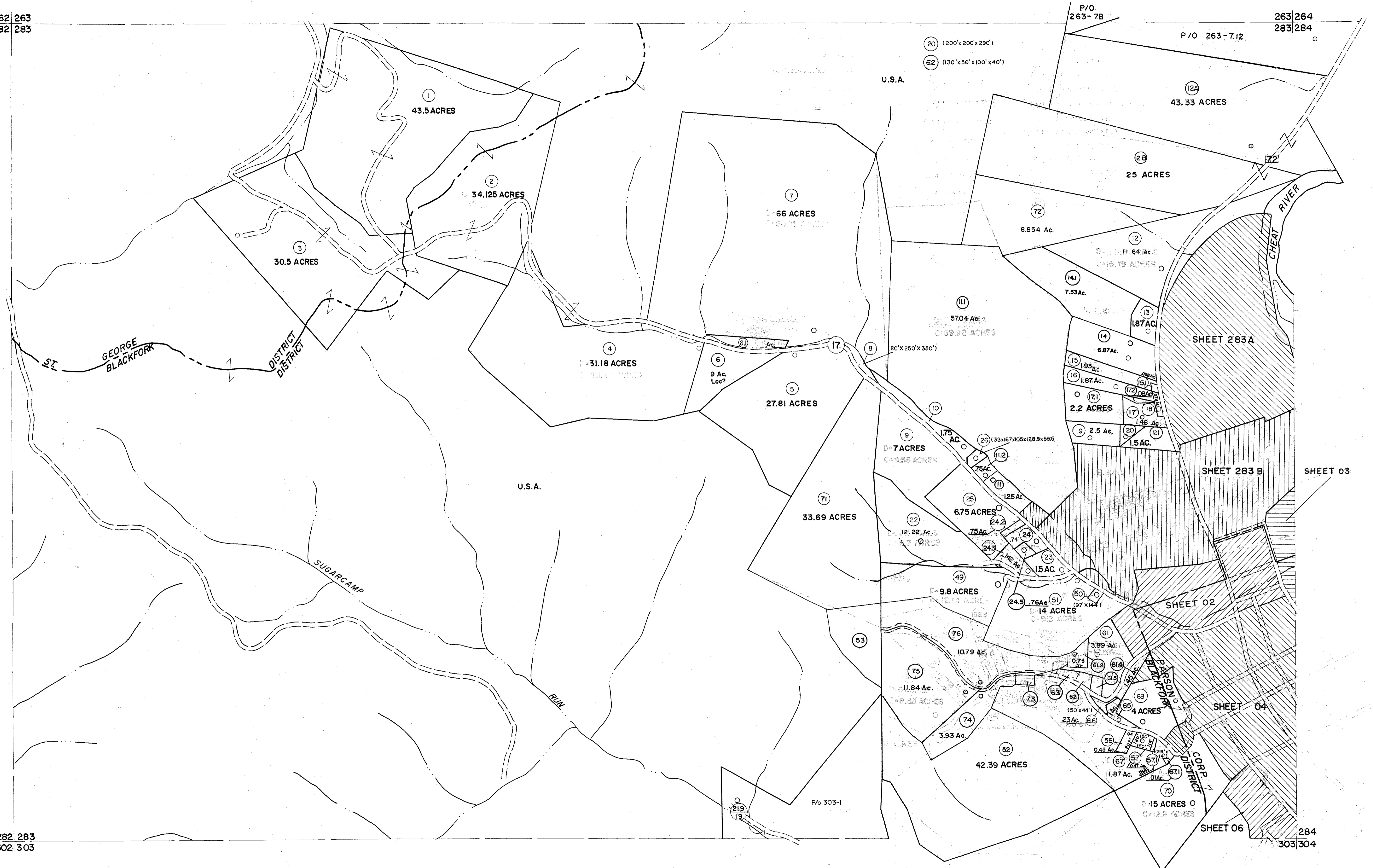


262 263
282 283

263 264
283 284

282 283
302 303

284
303 304



For Tax Purposes Only

Prepared by
MICHAEL BAKER, JR., INC.
Consulting Engineers
Rochester, Pennsylvania

Legend

Property line	—	Original lot line	— (15)
Edge of pavement or roadway	—	Deed lot number	○ (19)
Corporation line	—	Parcel or index number	○ (19)
District line	—	Improvement	—
County line	—	Railroad	—

Revisions

1	10-3-63	9	OGIS	3-19-92	TL	17	ESI	2/8/02	REK
2	6-4-75	10	OGIS	1/27/93	DSH	18	HBS	2/19/04	
3	Revised to 7-1-83	11	OGIS	2-95	HD	19		3/28/06	SBH
4	July, 1995	12	O.G.I.S	4-1-96	J.E.B	20		6-22-08	H+S
5	July, 1996	13	SLS INC.	- DDC	5/97	21		6-21-09	H+S
6	Revised to 7-1-87	14	SLS INC.	2/23/98	JWM	22		6/24/11	SBH
7	REV. TO 3-1-89	15	ESI	1/31/01	REK	23		5-4-13	H+S
8	OGIS	1/1/91	DSH			24			

5/31/15 SBH

KEY MAP

263
282 283 284
303

TUCKER COUNTY

STATE OF WEST VIRGINIA

Office of Assessor

DISTRICT

BLACKFORK
ST. GEORGE

SHEET NO: 283

Date, Aerial Photography: November, 1962 Date, Map Dec., 1962
Photo No. Scale: 1" = 400'