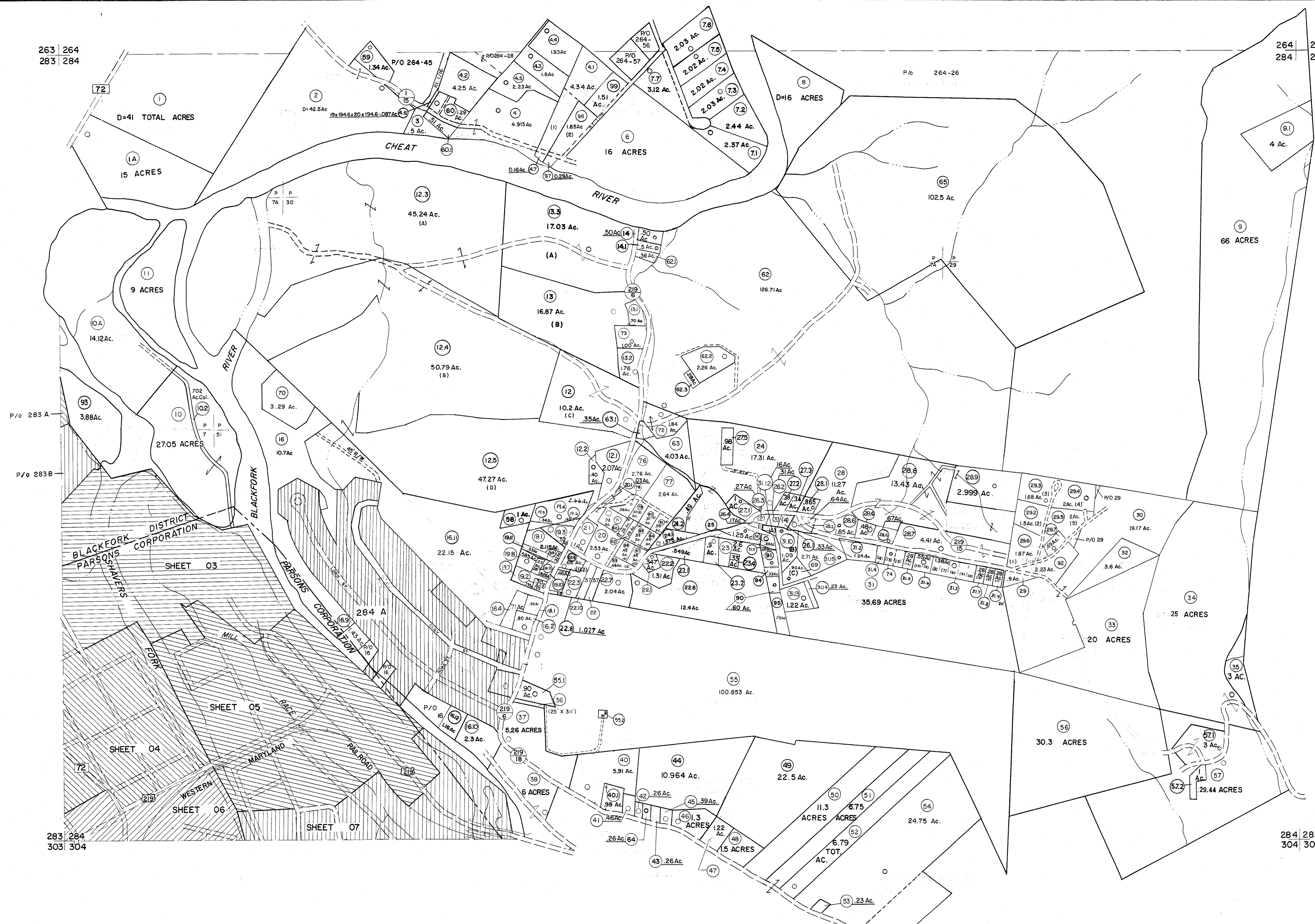


263 264
283 284

264 265
284 285



P/O 283 A
P/O 283 B

283 284
303 304

284 285
304 305

For Tax Purposes Only

Prepared by
MICHAEL BAKER, JR., INC.
Consulting Engineers
Rochester, Pennsylvania

Legend

Property line	Original lot line
Edge of pavement or roadway	Dead lot number
Corporation line	Parcel or index number
District line	Improvement
County line	Railroad

Revisions

1	10-3-63	9	Revised to 7-1-87	17	SLS INC. - DDC 5/97
2	6-3-64	10	REV TO 3-1-89	18	R.E.B. 18
3	6-4-75	11	OGIS 1/1/91	19	DSH 19
4	11-28-78	12	OGIS 3-19-92	20	SLS INC. 1/27/99
5	Revised to 7-1-83	13	OGIS 1/27/93	21	DSH 21
6	7-1-84	14	OGIS 12/13/93	22	SAJ 22
7	Revised to 10-1-85	15	OGIS 2-95	23	HD 23
8	July, 1996	16	O.G.I.S 4-1-96	24	J.E.B. 24

6-22-08
6-21-09
5-10-10 KEY MAP

264
283 284 285
304

3/21/05 S & H

TUCKER COUNTY
STATE OF WEST VIRGINIA
Office of Assessor

3/24/07 S & H
6/31/11 S & H
5-4-13 S & H
5/28/15 S & H

DISTRICT **BLACKFORK**

SHEET NO: 284

Date, Aerial Photography: November, 1961 Date, Map: Dec., 1962
Photo No. Scale: 1" = 400'