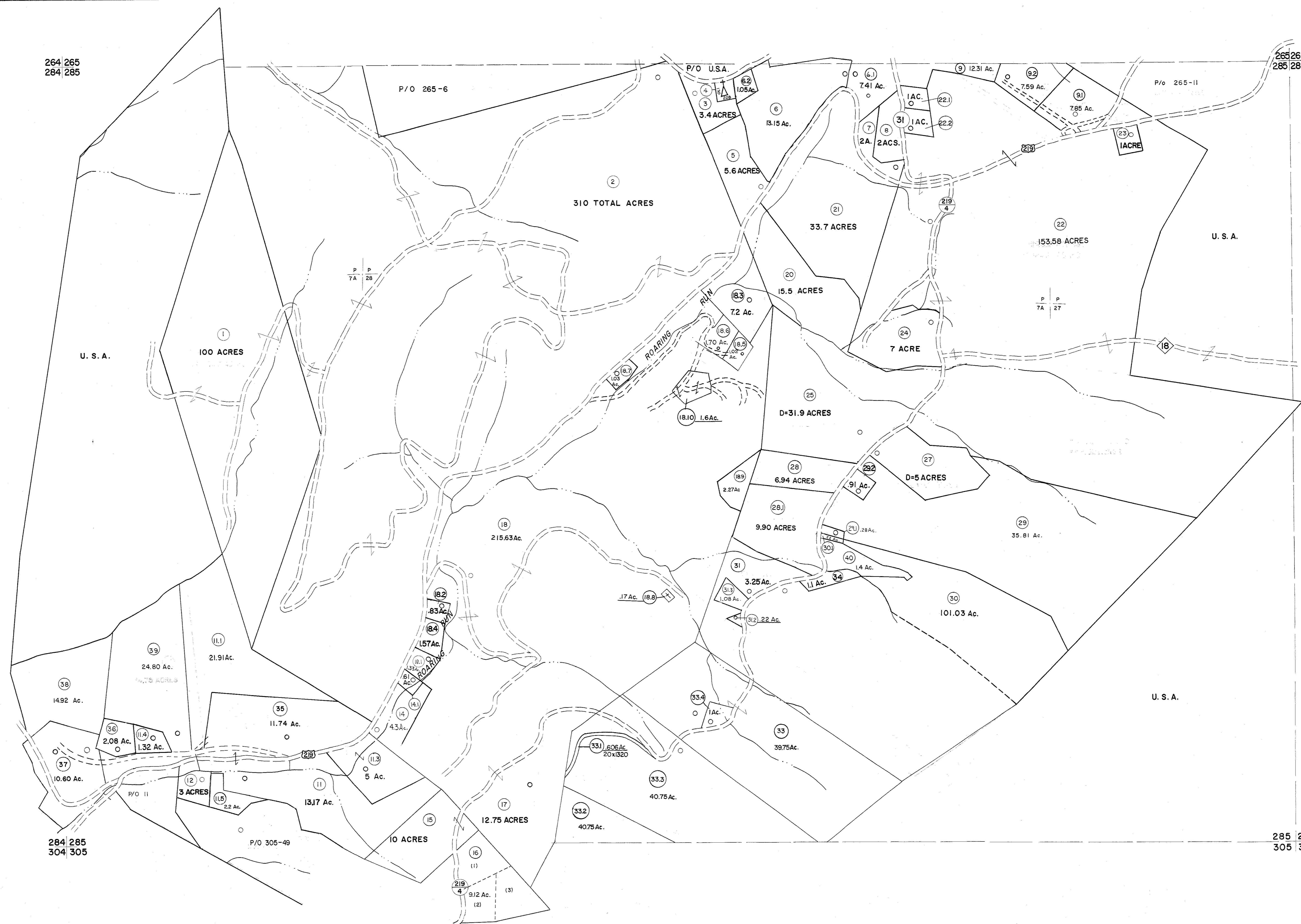


264 265
284 285

265 266
285 286



For Tax Purposes Only
 Prepared by
MICHAEL BAKER, JR., INC.
 Consulting Engineers
 Rochester, Pennsylvania

Legend

Property line	—	Original lot line	—
Edge of pavement or roadway	—	Deed lot number	(95)
Corporation line	—	Parcel or index number	(11)
District line	—	Improvement	—
County line	—	Railroad	—

Revisions

1	10-3-63	9	OGIS	3-19-92	TL	17	ESI	2/8/02	REK	
2	6-4-75	10	OGIS	12/12/93	SAJ	18	ESI	2/20/03	REK	
3	11-29-72	11	O.G.I.S.	4-1-96	J.E.B.	19	HBS	2/19/04		
4	Revised 4-7-88	12	SLS INC.	- DDC	5/97	20	3/21/05	S B H		
5	7-1-84	13	SLS INC.	2/27/98	JWM	21	3/24/07	S B H		
6	10-1-85	14	SLS INC.	1/27/99	DSW	22	C-21-09	H # 5		
7	Revised 6-3-99	15	SLS INC.	3/2/00	JWM	23	S-2-10	H # 5		
8	OGIS	1/1/91	DSH	16	ESI	2/1/01	REK	24	6/24/11	S B H

5-4-13 445
 KEY MAP
 5/29/15 S B H
 265
 284 285 286
 305

TUCKER COUNTY
 STATE OF WEST VIRGINIA
 Office of Assessor

DISTRICT **BLACKFORK**
SHEET NO: 285
 Date, Aerial Photography: November, 1961 Date, Map: Dec. 1962
 Photo No: Scale: 1" = 400'

285 286
305 306