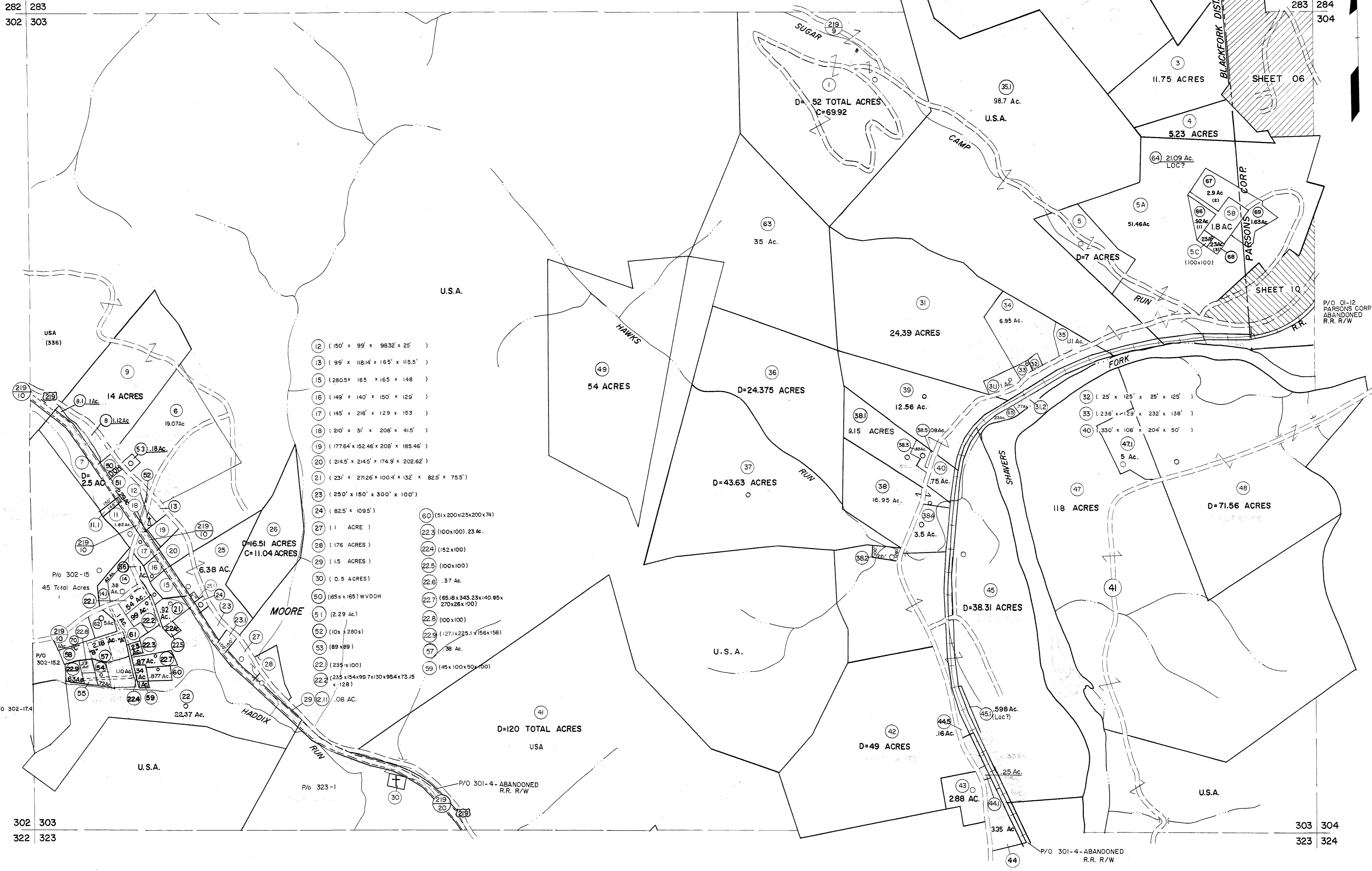


282 283
302 303

283 284
304



12	(150' x 99' x 9832' x 25')
13	(99' x 118.14' x 165' x 115.5')
15	(280.5' x 165' x 165' x 148')
16	(149' x 140' x 150' x 125')
17	(145' x 216' x 129' x 153')
18	(210' x 31' x 208' x 41.5')
19	(177.64' x 152.46' x 208' x 185.46')
20	(214.5' x 214.5' x 174.9' x 202.62')
21	(231' x 271.26' x 100.4' x 132' x 82.5' x 75.5')
23	(250' x 150' x 300' x 100')
24	(82.5' x 109.5')
27	(1 ACRE)
28	(176 ACRES)
29	(15 ACRES)
30	(0.5 ACRES)
50	(65 x 165) WVDH
51	(2.29 Ac.)
52	(10 x 280s)
55	(89 x 89)
22	(235 x 100)
22.2	(235 x 154 x 99.7 x 130 x 95.4 x 73.15 x 128)
29	(2.11) .08 AC.
60	(51 x 200 x 125 x 200 x 74)
22.3	(100 x 100). 23 Ac.
22.4	(152 x 100)
22.5	(100 x 100)
22.6	.37 Ac.
22.7	(65.18 x 343.23 x 140.65 x 270 x 26 x 100)
22.8	(100 x 100)
22.9	(127.1 x 225.1 x 156 x 158)
57	.38 Ac.
59	(45 x 100 x 50 x 100)

For Tax Purposes Only

Prepared by
MICHAEL BAKER, JR., INC.
Consulting Engineers
Rochester, Pennsylvania

Legend

Property line	—————	Original lot line	—————
Edge of pavement or roadway	—————	Deed lot number	(15)
Corporation line	—————	Parcel or index number	(39)
District line	—————	Improvement	o
County line	—————	Railroad	—————

Revisions

1	10-3-63	9	OGIS 1/2/91	DSH	17	SLS INC. 3/3/98	JWM	REK
2	6-4-75	T.B.	10	OGIS 3-19-92	TL	18	ESI 2/1/01	REK
3	Revised 7-1-85		11	OGIS 1/29/93	DSH	19	ESI 2/8/02	REK
4	7-1-84	L.E.S.	12	OGIS 12/11/93	SAJ	20	ESI 2/20/03	REK
5	July 1986	RL	13	OGIS 4-95	HD	21	HBS 2/19/04	
6	July 1986	TRL	14	O.G.I.S 4-1-96	J.E.B.	22	3/21/05	S&H
7	Revised to 7-1-87		15	SLS INC. - DDC 5/97		23	6-22-08	H.S.
8	Revised to 3-1-89	R.R.	16	SLS INC. - DDC 7/97		24	6-21-09	H.S.

KEY MAP

283
302 303 304
323

TUCKER COUNTY
STATE OF WEST VIRGINIA
Office of Assessor

DISTRICT **BLACKFORK**

SHEET NO: 303

Date, Aerial Photography: November, 1961 Date, Map: Dec. 1962
Photo No: Scale: 1" = 400'