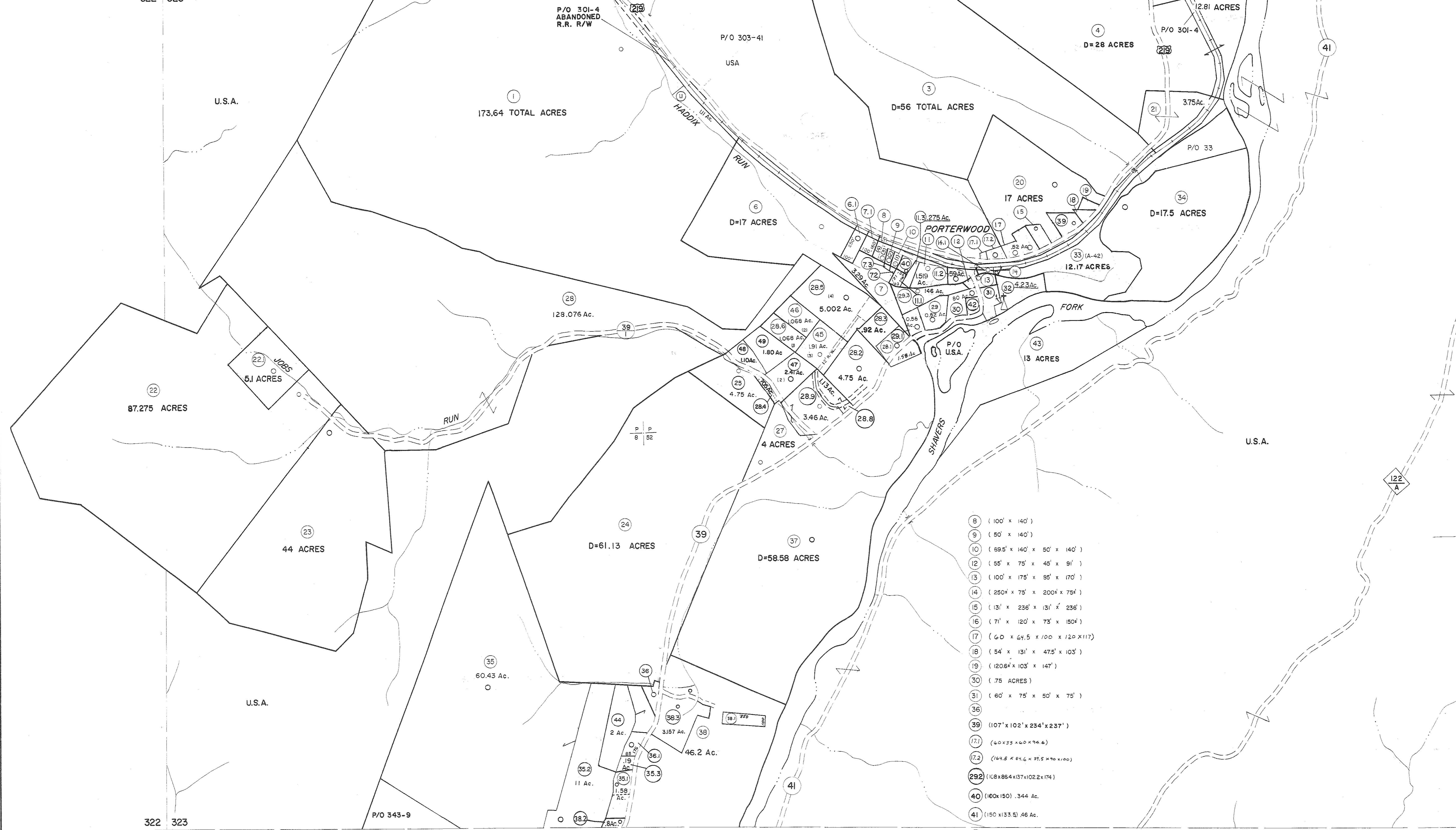


302 303
322 323

303 304
323 324



- 8 (100' x 140')
- 9 (80' x 140')
- 10 (89.5' x 140' x 50' x 140')
- 12 (55' x 75' x 45' x 91')
- 13 (100' x 175' x 85' x 170')
- 14 (250' x 75' x 200' x 75')
- 15 (131' x 236' x 131' x 236')
- 16 (71' x 120' x 73' x 150')
- 17 (60' x 64.5' x 100' x 120' x 117')
- 18 (54' x 131' x 47.5' x 103')
- 19 (1208' x 103' x 147')
- 30 (.75 ACRES)
- 31 (60' x 75' x 50' x 75')
- 36
- 39 (107' x 102' x 234' x 237')
- 171 (60 x 33 x 40 x 94.6)
- 172 (64.5 x 81.6 x 95.5 x 90 x 100)
- 292 (108 x 86.4 x 137 x 102.2 x 174)
- 40 (100 x 150) .344 Ac.
- 41 (150 x 133.5) .46 Ac.
- 42 (132 x 82.5) .25 Ac.
- 72 .03 Ac.
- 73 .02 Ac.

322 323
342 343

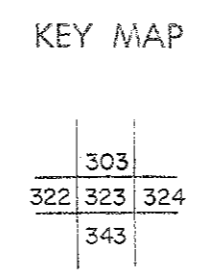
323 324
343 344

For Tax Purposes Only

Prepared by
MICHAEL BAKER, JR., INC.
Consulting Engineers
Rochester, Pennsylvania

Legend	
Property line	Original lot line
Edge of pavement or roadway	Dead lot number
Corporation line	Parcel or index number
District line	Improvement
County line	Railroad

Revisions	
1 10-2-63	REV. TO 3-1-89
2 6-4-75	OGIS 1/5/91
3 11-27-78	OGIS 3-19-92
4 Revised to 7-1-88	OGIS 1/30/93
5 7-1-84	O.G.I.S 4-1-96
6 July 1985	SLS INC. - DDC 5/97
7 July 1986	SLS INC. 3/3/98
8 Revised to 7-1-87	SLS INC. 1/28/99



TUCKER COUNTY
STATE OF WEST VIRGINIA
Office of Assessor

DISTRICT **BLACKFORK**

SHEET NO: 323

Date, Aerial Photography: November, 1961 Date, Map: Dec., 1962
Photo No: Scale: 1" = 400'