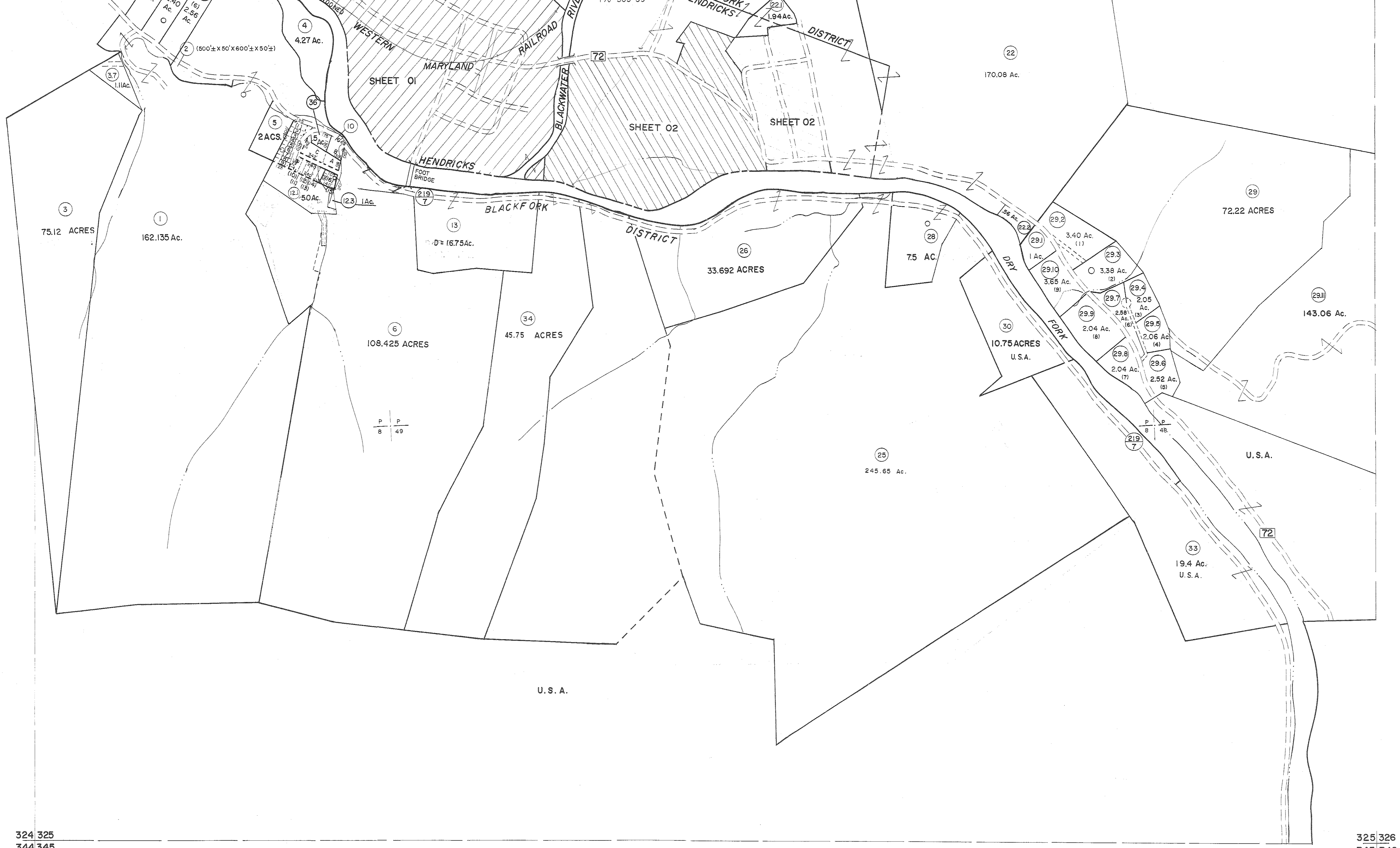


304 | 305  
324 | 325

305 | 306  
325 | 326



324 | 325  
344 | 345

325 | 326  
345 | 346

**For Tax Purposes Only**

Prepared by  
**MICHAEL BAKER, JR., INC.**  
Consulting Engineers  
Rochester, Pennsylvania

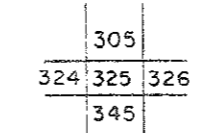
**Legend**

Property line	---	Original lot line	---
Edge of pavement or roadway	---	Deed lot number	(15)
Corporation line	---	Parcel or index number	(2)
District line	---	Improvement	---
Country line	---	Railroad	---

**Revisions**

1	6-4-75	T.G.	9	OGIS	3-19-92	TL	17	ESI	2/12/02	REK
2	11-78	BAH	10	OGIS	1/30/93	DSH	18	ESI	2/20/03	REK
3	Revised to 7-1-83		11	OGIS	12/12/93	SAJ	19		3/21/05	S&H
4	Revised to 7-1-83		12	OGIS	2-95	HD	20		5/25/15	S&H
5	July, 1986	TRL	13	O.G.I.S.	4-1-96	J.E.B.	21			
6	Revised to 7-1-87		14	SLS INC.	- DDC	5/97	22			
7	REV TO 3-1-89	RE.B.	15	SLS INC.	3/3/98	J.W.M.	23			
8	OGIS	1/5/91	16	SLS INC.	1/28/99	D.S.W.	24			

**KEY MAP**



**TUCKER COUNTY**  
STATE OF WEST VIRGINIA  
Office of Assessor

DISTRICT  
**BLACKFORK (HENDRICKS)**  
SHEET NO: 325

Date, Aerial Photography: November 1961 Date, Map: Dec. 1962  
Photo No: Scale: 1" = 400'