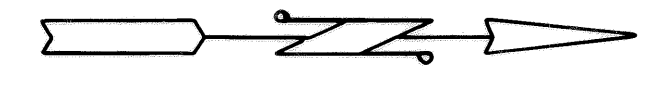
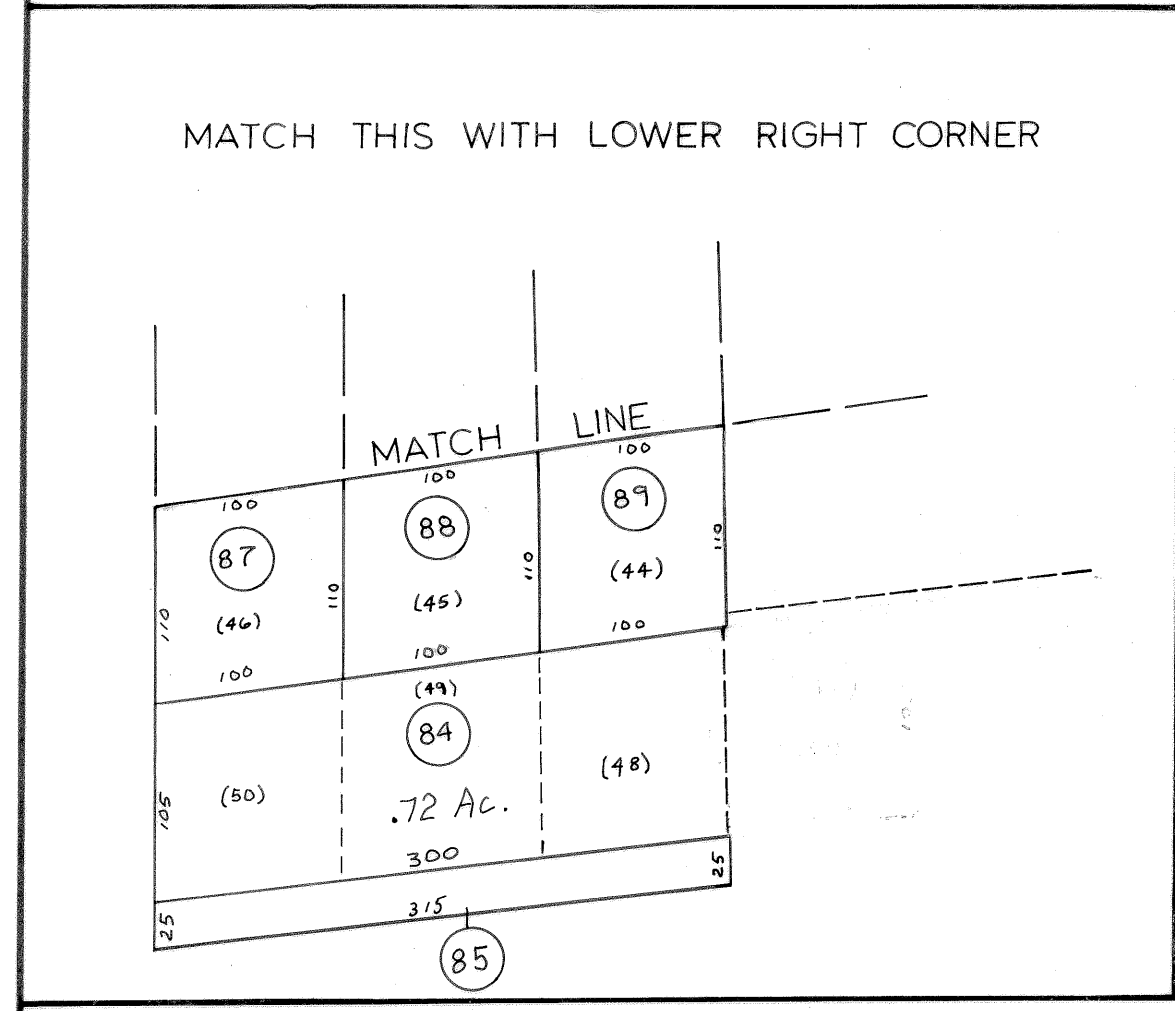
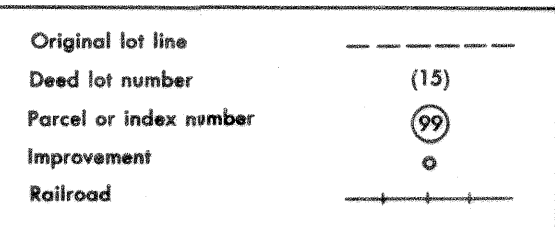
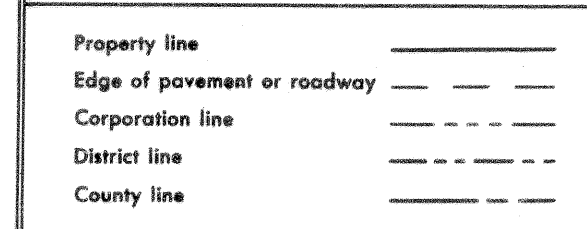


W. VA. STATE ROUTE 32



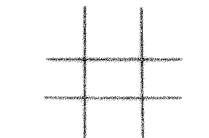
For Tax Purposes Only

Prepared by
ASSESSMENT EQUALIZATION DIV.
STATE TAX COMMISSIONER
CHARLESTON, W. VA.



Revisions	
1 6-5-75 T.E.	9 OGIS 1/31/93 DSH 17
2 11-22-78 D.G.	10 OGIS 2-95 HD 18
3 Revised to 7-1-85	11 O.G.I.S 4-1-96 J.E.B 19
4 7-1-84 L.E.S.	12 SLS INC. 1/28/99 DSW 20
5 1/1/85 R.E.	13 ESI 2/12/02 REK 21
6 Rev. to 3-1-89 R.E.B.	14 HBS 2/19/04 22
7 OGIS 1/5/91 DSH	15 3/28/06 S.B.H 23
8 OGIS 3-19-92 TL	16 24

KEY MAP



TUCKER COUNTY
STATE OF WEST VIRGINIA
Office of Assessor

DISTRICT DRY FORK

SHEET NO: 350-A

Date, Aerial Photography: NOV. '66
Photo No: Scale: 1" = 100'