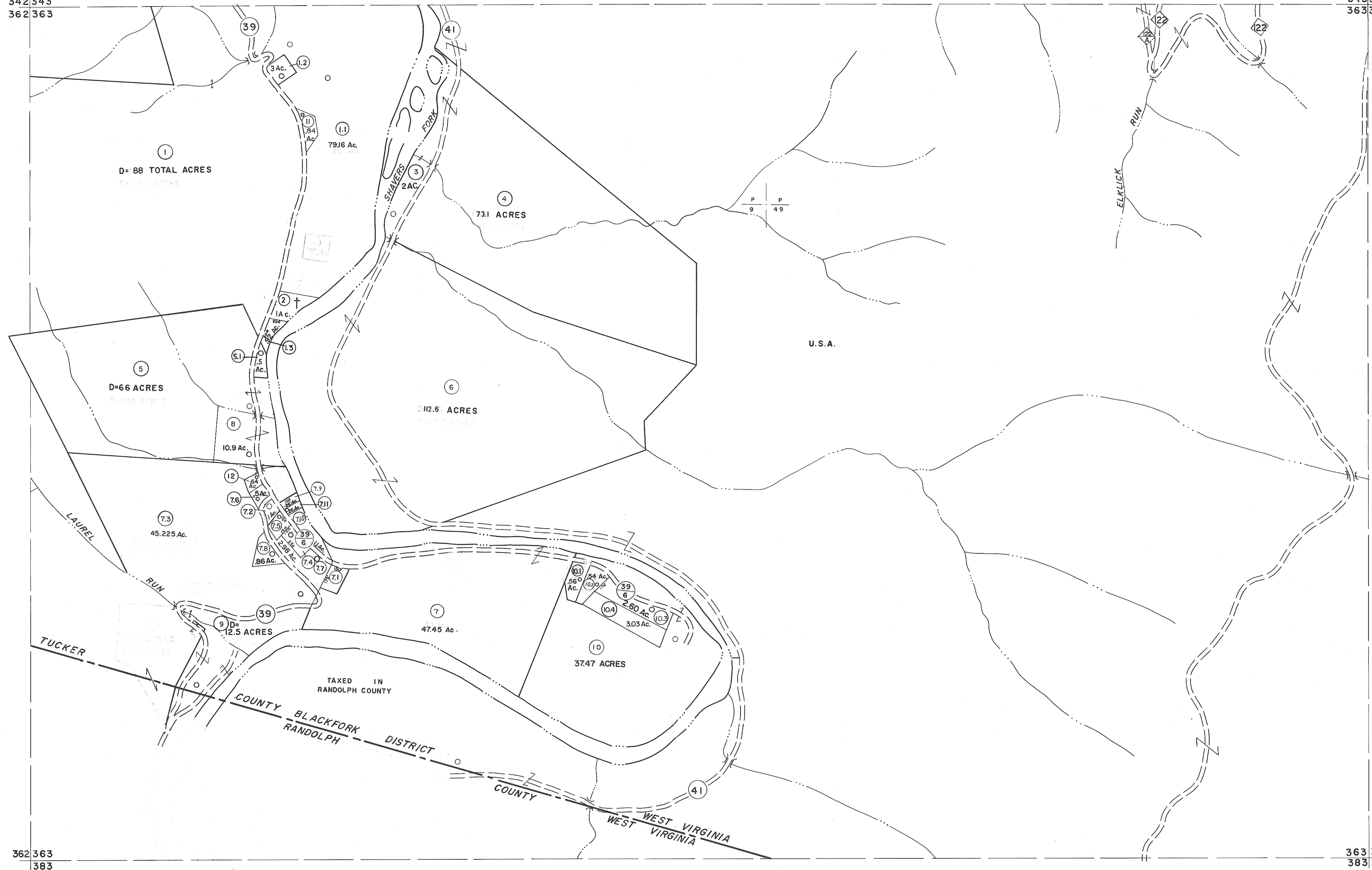


342343
362363

343344
363364



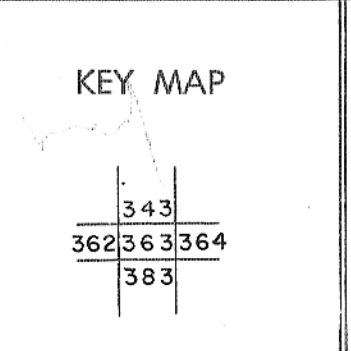
For Tax Purposes Only
 Prepared by
MICHAEL BAKER, JR., INC.
 Consulting Engineers
 Rochester, Pennsylvania

Legend

Property line	—	Original lot line	—
Edge of pavement or roadway	—	Deed lot number	(15)
Corporation line	—	Parcel or index number	(19)
District line	—	Improvement	o
County line	—	Railroad	—

Revisions

1	6-3-75	J.C.	9	OGIS	12/12/93	SAJ	17
2	11/21/78	D.G.	10	SLS INC.	- DDC 5/97		18
3	Revised to 7-1-88		11	ESI	2/2/01	BEK	19
4	7-1-84	L.E.S.	12	3/28/06		SBH	20
5	Revised to 7-1-87		13	6-21-09		4.5	21
6	Rev. to 3-1-89	R.E.B.	14	5-4-13			22
7	OGIS	1/6/91	D.B.H.				23
8	OGIS	3-19-92	T.L.				24



TUCKER COUNTY
 STATE OF WEST VIRGINIA
 Office of Assessor

DISTRICT **BLACKFORK**
SHEET NO: 363
 Date, Aerial Photography: November, 1961 Date, Map: Dec., 1962
 Photo No: Scale: 1" = 400'