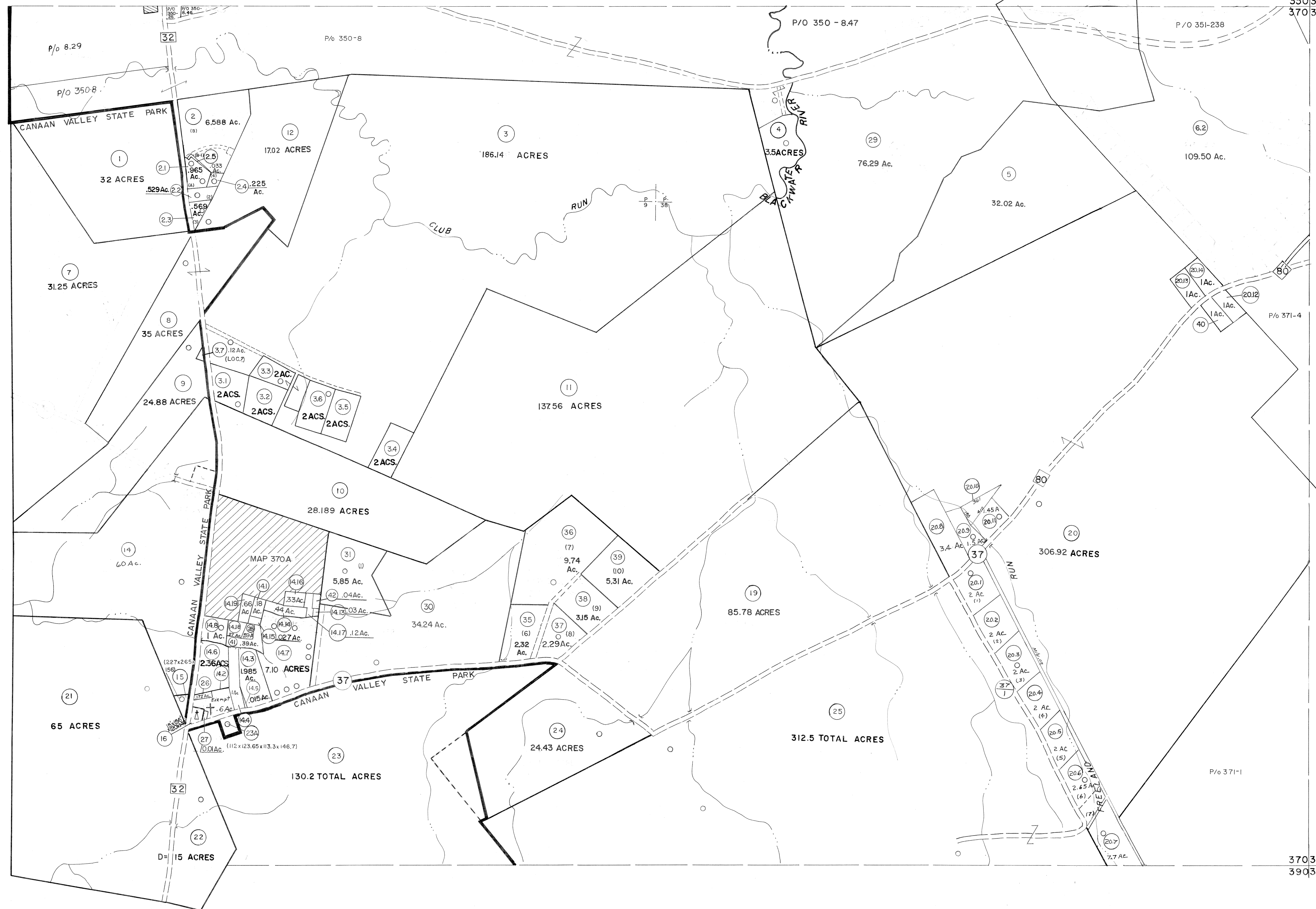


349350
369370

350351
370371



369370
389390

370371
390391

For Tax Purposes Only

Prepared by
MICHAEL BAKER, JR., INC.
Consulting Engineers
Rochester, Pennsylvania

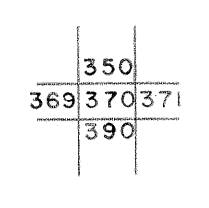
Legend

Property line	—	Original lot line	- - - - -
Edge of pavement or roadway	—	Dead lot number	(15)
Corporation line	—	Parcel or index number	(19)
District line	—	Improvement	o
County line	—	Railroad	—+—

Revisions

1	6-6-75	BH	9	Rev. to 3-1-89	R.E.B.	17	SLS INC. 1/28/99	DSW
2	11-27-78	DG	10	OGIS 1/6/91	DSH	18	SLS INC. 3/2/00	JWM
3	REV. TO 7-1-83	NCS	11	OGIS 3-19-92	TL	19	ESI 2/2/01	REK
4	7-1-84	L.E.S.	12	OGIS 1/31/93	DSH	20	ESI 2/12/02	REK
5	Revised to		13	OGIS 12/12/93	SAJ	21	ESI 2/20/03	REK
6	REV. TO 7-1-85	NCS	14	OGIS 2-95	HD	22	3/21/05	S.B.H.
7	July, 1986	TRL	15	O.G.I.S 4-1-96	J.E.B.	23		
8	Revised to 7-1-87		16	SLS INC. 3/3/98	JWM	24		

KEY MAP



TUCKER COUNTY
STATE OF WEST VIRGINIA
Office of Assessor

DISTRICT

DRY FORK

SHEET NO: 370

Date, Aerial Photography: November, 1961 Date, Map: Dec. 1962
Photo No. Scale: 1" = 400'