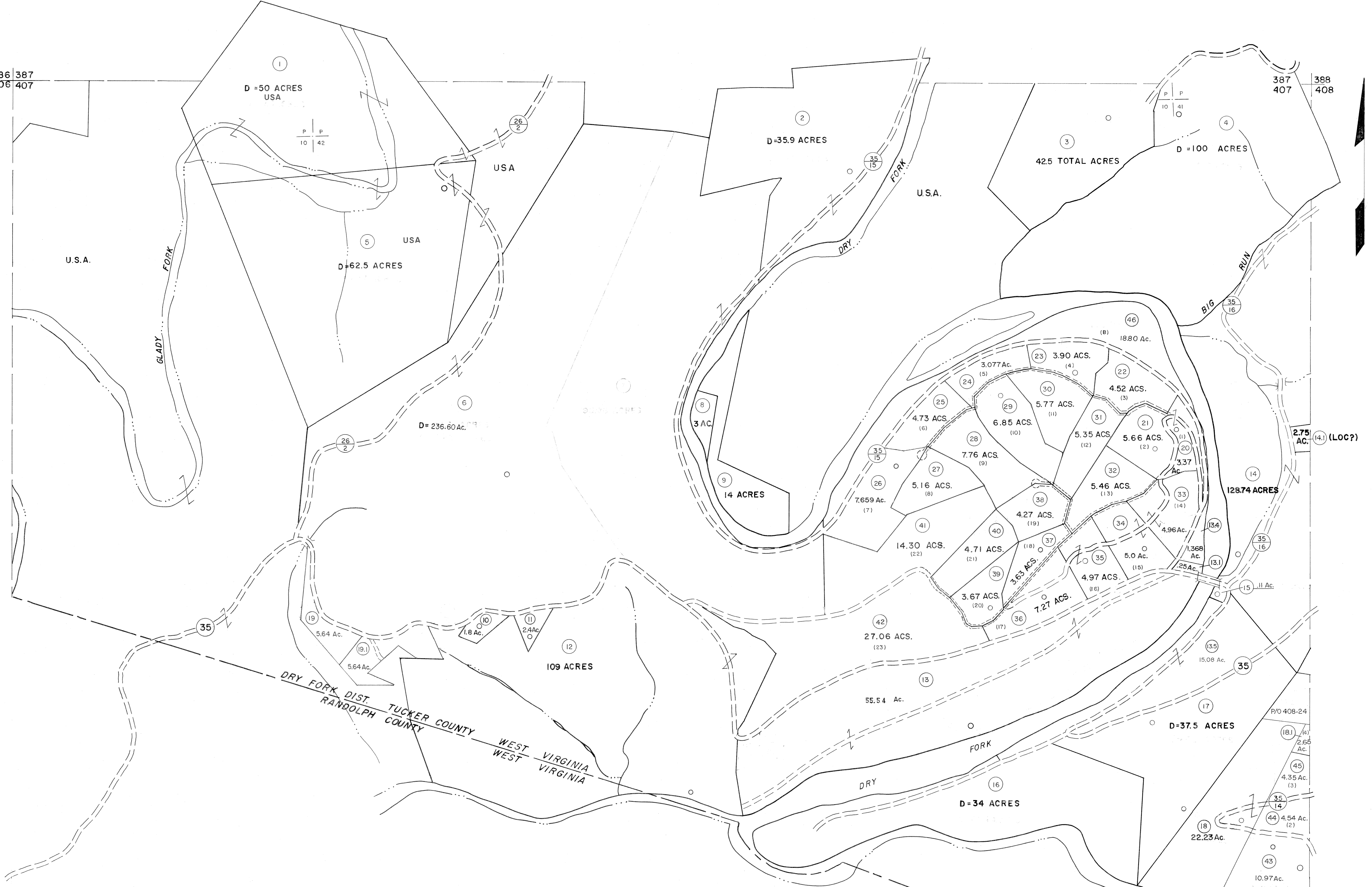


386 387  
406 407

387 388  
407 408

406 407  
427

407 408  
427 428



For Tax Purposes Only

Prepared by  
MICHAEL BAKER, JR., INC.  
Consulting Engineers  
Rochester, Pennsylvania

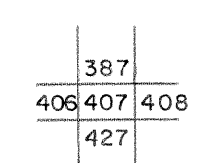
Legend

Property line	—	Original lot line	- - - - -
Edge of pavement or roadway	—	Deed lot number	(15)
Corporation line	—	Parcel or index number	(16)
District line	—	Improvement	○
County line	—	Railroad	—+—

Revisions

1	11-27-78	DG	9	OGIS	3-19-92	TL	17	ESI	2/12/02	REK
2	REV. TO 7-1-83	NCS	10	OGIS	2/1/93	DSH	18	ESI	2/20/03	REK
3	7-1-84	L.E.S.	11	OGIS	12/12/93	SAJ	19	3/21/05	S.B.H.	
4	REV. TO 7-1-85	NCS	12	OGIS	2-95	HD	20			
5	July, 1986	TRL	13	O.G.I.S.	4-1-96	J.E.B	21			
6	Revised to 7-1-87	REK	14	SLS INC.	1/28/99	DSW	22			
7	Rev. to 3-1-89	R.E.B.	15	ESI	2/2/01	REK	23			
8	OGIS	1/6/91	DSH	16			24			

KEY MAP



TUCKER COUNTY

STATE OF WEST VIRGINIA

Office of Assessor

DISTRICT

DRY FORK

SHEET NO: 407

Date, Aerial Photography: Nov. 1961 Date, Map: Dec. 1962  
Photo No: Scale: 1" = 400'