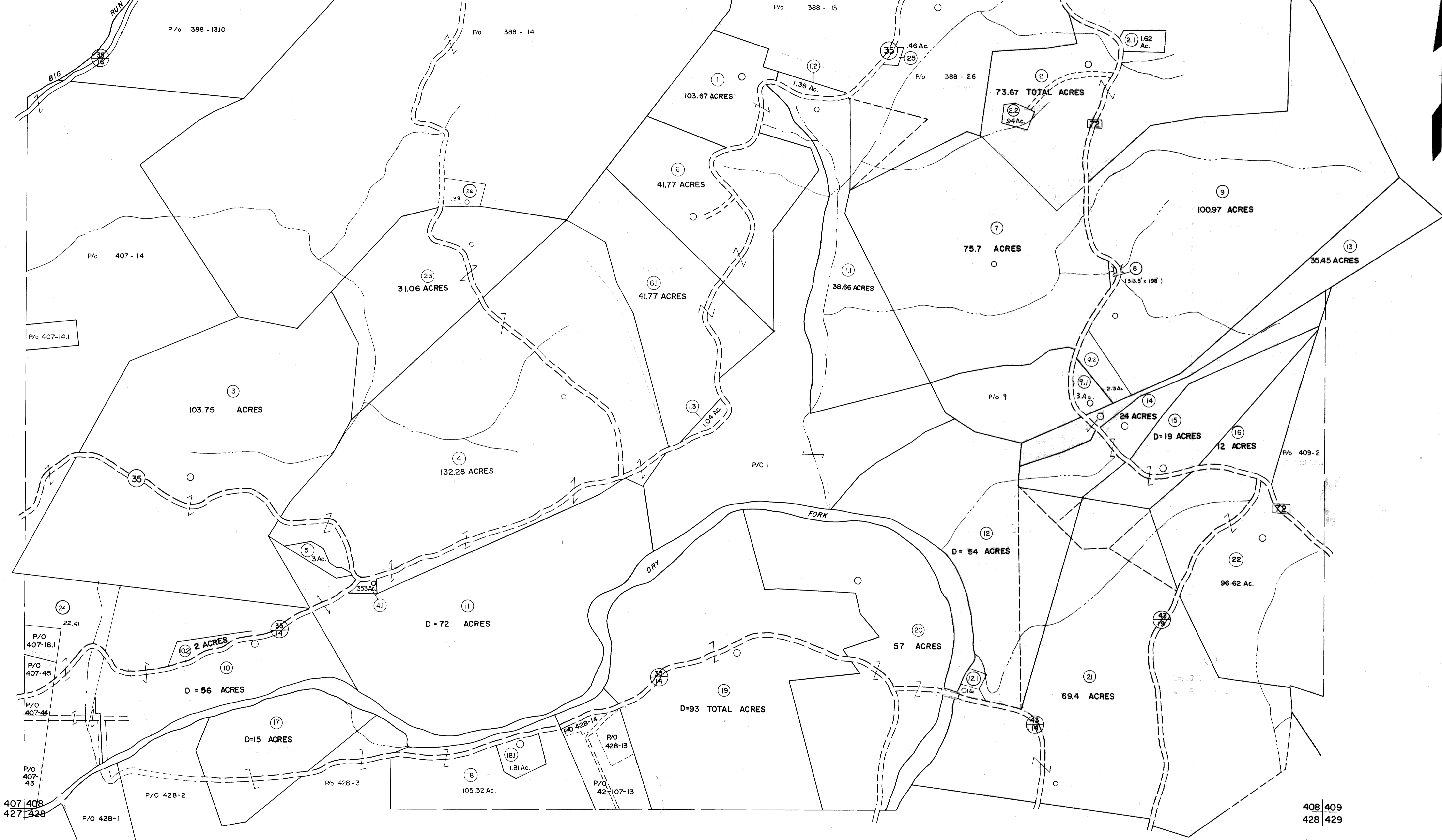


387 388  
407 408

388 389  
408 409



**For Tax Purposes Only**

Prepared by  
**MICHAEL BAKER, JR., INC.**  
Consulting Engineers  
Rochester, Pennsylvania

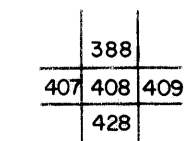
**Legend**

Property line	—	Original lot line	- - - - -
Edge of pavement or roadway	—	Deed lot number	(15)
Corporation line	—	Parcel or index number	(99)
District line	—	Improvement	o
County line	—	Railroad	—+—+—+—

**Revisions**

1	6-3-68	9	OGIS	1/6/91	DSH	17	ESI	2/20/03	REK
2	6-4-75	10	OGIS	3-19-92	TL	18			
3	11-27-78	11	OGIS	2/1/93	DSH	19			
4	REV. TO 7-1-83	12	OGIS	12/12/93	SAJ	20			
5	7-1-84	13	O.G.I.S.	4-1-96	J.E.B	21			
6	REV. TO 7-1-85	14	SLS INC.	DDC 5/97		22			
7	July, 1986	15	SLS INC.	1/28/99	DSW	23			
8	Rev. Co. 3-1-89	16	ESI	2/2/01	REK	24			

**KEY MAP**



**TUCKER COUNTY**  
STATE OF WEST VIRGINIA  
Office of Assessor

**DISTRICT**

**DRY FORK**

**SHEET NO: 408**

Date, Aerial Photography: \_\_\_\_\_ Date, Map: \_\_\_\_\_  
Photo No: \_\_\_\_\_ Scale: \_\_\_\_\_