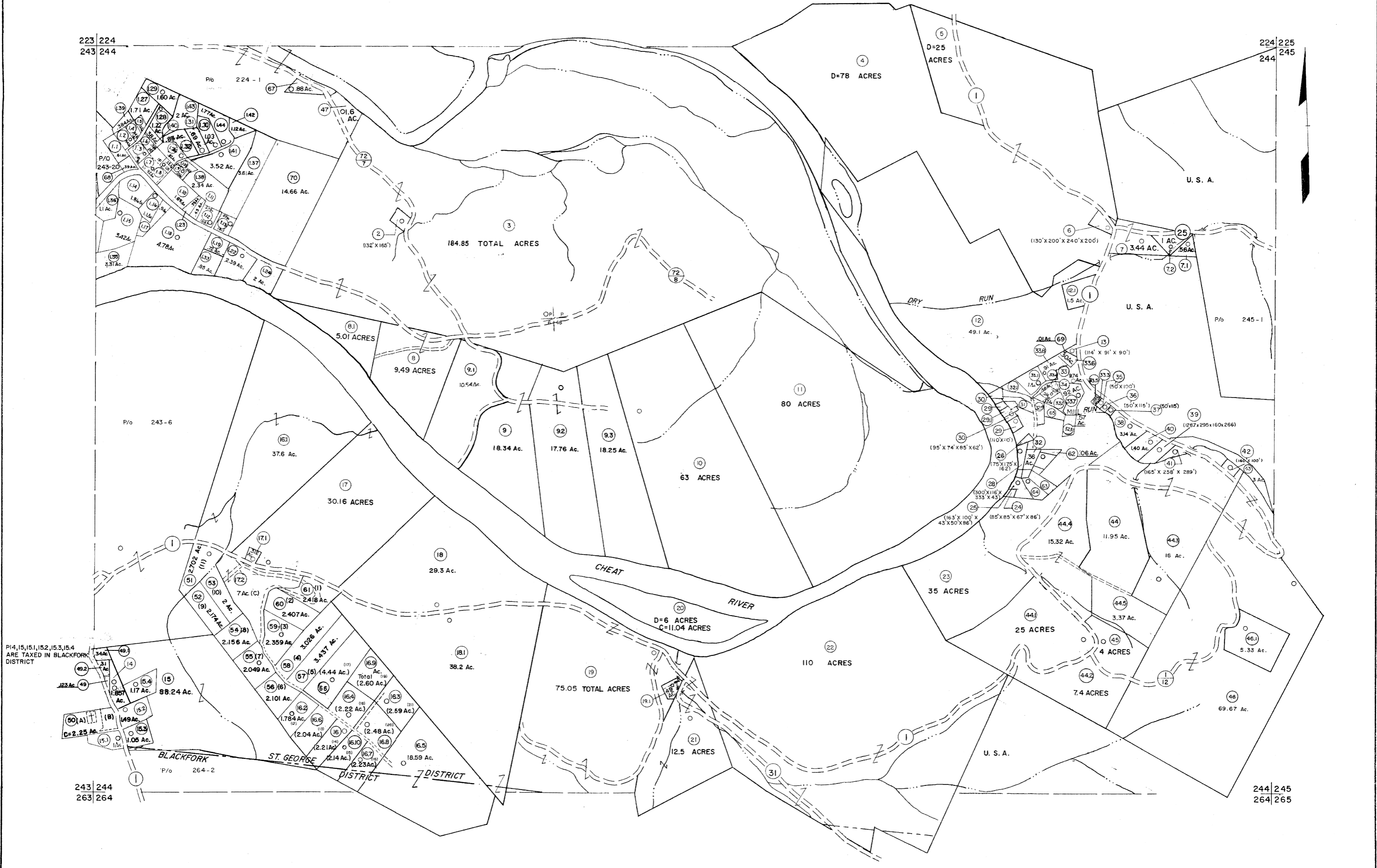


223 224
243 244

224 225
244 245



P14,15,15.1,15.2,15.3,15.4
ARE TAXED IN BLACKFORK
DISTRICT

BLACKFORK
ST. GEORGE
DISTRICT

For Tax Purposes Only

Prepared by
MICHAEL BAKER, JR., INC.
Consulting Engineers
Rochester, Pennsylvania

Legend

Property line	—	Original lot line	- - - - -
Edge of pavement or roadway	— · — · —	Deed lot number	(15)
Corporation line	— · — · —	Parcel or index number	(99)
District line	— · — · —	Improvement	○
County line	— · — · —	Railroad	— + — + —

Revisions

1	10-3-69	9	Revised to 7-1-87	17	SLS INC. - DDC 5/97
2	6-3-64	10	REV. TO 3-1-89	18	SLS INC. 2/23/98 JWM
3	6-3-75	11	OGIS 12/31/90	19	SLS INC. 1/27/99 DSW
4	11/21/78	12	OGIS 3-19-92	20	SLS INC. 3/1/00 JWM
5	Revised to 7-1-88	13	OGIS 1/25/93	21	ESI 1/31/01 REK
6	7-1-84	14	OGIS 12/11/93	22	ESI 2/8/02 REK
7	Revised to 7-1-85	15	OGIS 2-95	23	ESI 2/20/03 REK
8	REV. TO 7-1-86	16	OGIS 4-1-96	24	MS 2/19/04

3/21/05	S&H
3/28/06	S&H
KEY MAP	
3/24/07	S&H
6-22-08	445
224	
243 244 245	
264	

TUCKER COUNTY
STATE OF WEST VIRGINIA
Office of Assessor

DISTRICT **ST. GEORGE BLACKFORK**

SHEET NO: 244

Date, Aerial Photography: November, 1961 Date, Map: Dec., 1962
Photo No: Scale: 1" = 400'