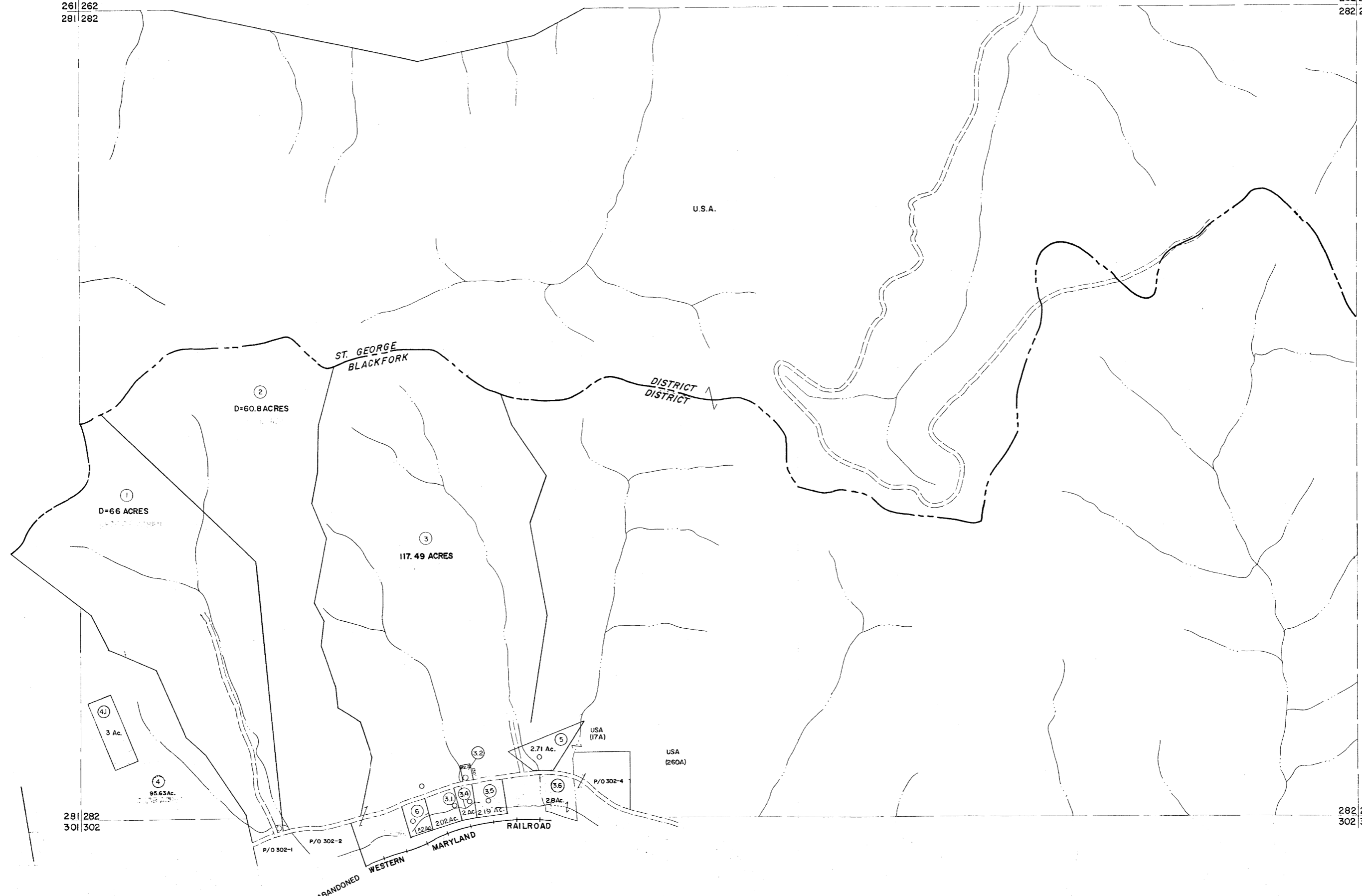


261 262
281 282

262 263
282 283



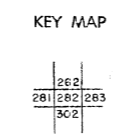
281 282
301 302

282 283
302 303

For Tax Purposes Only
Prepared by
MICHAEL BAKER, JR., INC.
Consulting Engineers
Rochester, Pennsylvania

Legend	
Property line	Original lot line
Edge of pavement or roadway	Deed lot number
Corporation line	Parcel or index number
District line	Improvement
County line	Railroad

Revisions	
1	6-4-75 T.E.
2	Revised to 7-1-82
3	REV. TO 3-1-89 R.E.B.
4	OGIS 3-19-92 TL
5	OGIS 1/27/93 DSH
6	OGIS 12/12/93 SAJ
7	SLS INC. 2/23/98 JWM
8	SLS INC. 3/2/00 JWM
9	ESI 1/31/01 REK
10	ESI 2/8/02 REK
11	ESI 2/20/03 REK
12	3/24/07 S&H
13	4-22-08 H&S
14	4-21-09 H&S
15	
16	



TUCKER COUNTY
STATE OF WEST VIRGINIA
Office of Assessor

DISTRICT **BLACKFORK**
ST. GEORGE

SHEET NO: 282

Date, Aerial Photography: November, 1961 Date, Map: Dec, 1962
Photo No: Scale: 1" = 400'