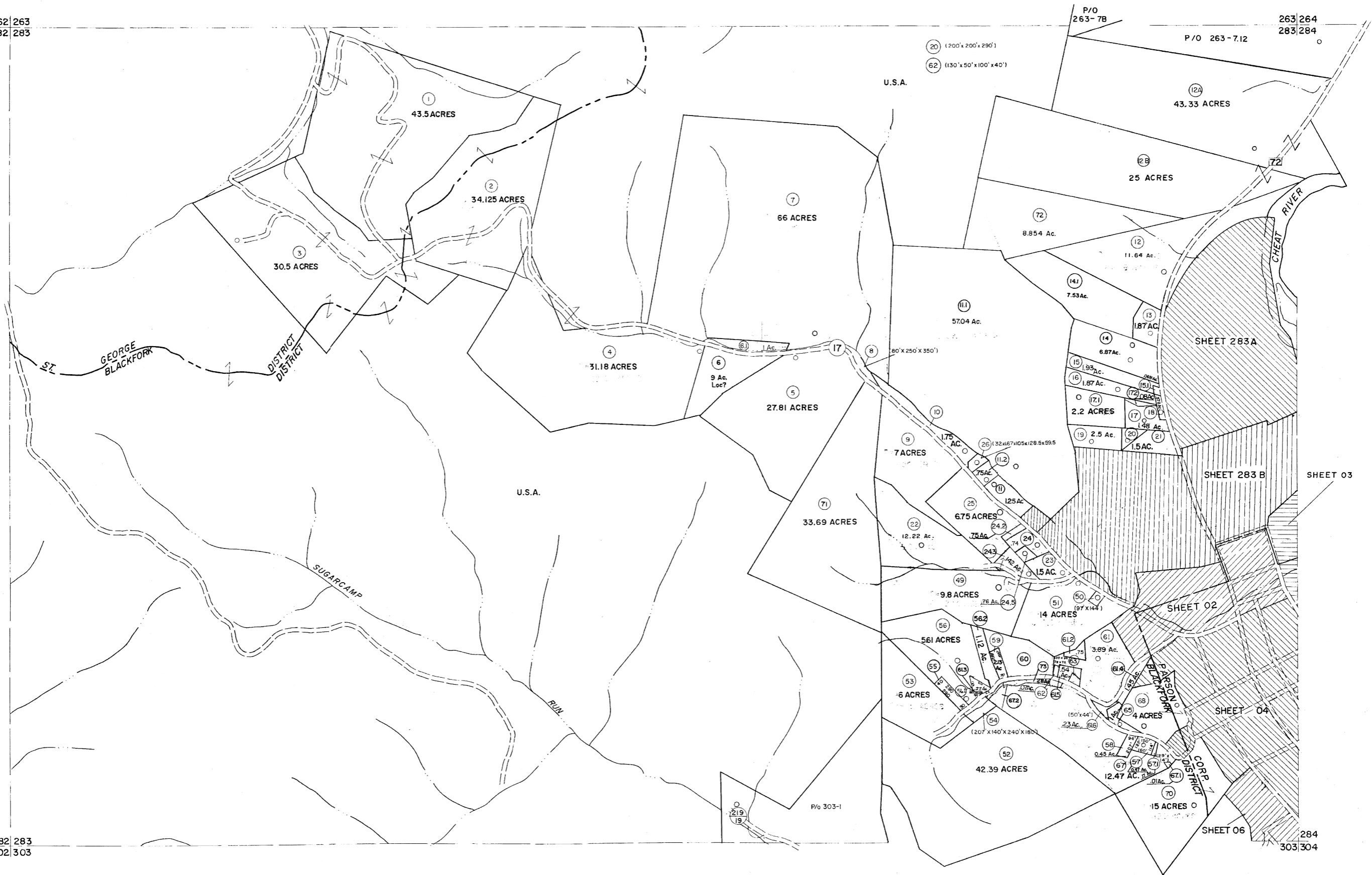


262 263  
282 283

263 264  
283 284

282 283  
302 303

284  
303 304



For Tax Purposes Only

Prepared by  
MICHAEL BAKER, JR., INC.  
Consulting Engineers  
Rochester, Pennsylvania

Legend

Property line	—————	Original lot line	—————
Edge of pavement or roadway	—————	Deed lot number	①
Corporation line	—————	Parcel or index number	②
District line	—————	Improvement	③
County line	—————	Railroad	④

Revisions

No.	Date	By	Description
1	10-3-63		
2	6-4-75	T.G.	
3	Revised to 7-1-83		
4	July 1985	TRL	
5	Revised to 7-1-87		
6	REV. TO 3-1-89	R.E.B.	
7	OGIS 1/1/91	DSH	
9	OGIS 3-19-92	TL	
10	OGIS 1/27/93	DSH	
11	OGIS 2-95	HD	
12	O.G.I.S. 4-1-96	J.E.B.	
13	SLS INC. - DDC 5/97		
14	SLS INC. 2/23/98	J.W.M.	
15	ESI 1/31/01	REK	
17	ESI 2/8/02	RFK	
18	HAS 2/19/04		
19	3/28/06	S.B.H.	
20	6-22-08	H.4.S.	
21	6-21-09	H.4.S.	
22			
23			
24			

KEY MAP



TUCKER COUNTY  
STATE OF WEST VIRGINIA  
Office of Assessor

DISTRICT  
**BLACKFORK  
ST. GEORGE**

SHEET NO: 283

Date, Aerial Photography: November, 1962 Date, Map Dec, 1962  
Photo No: Scale: 1" = 400'