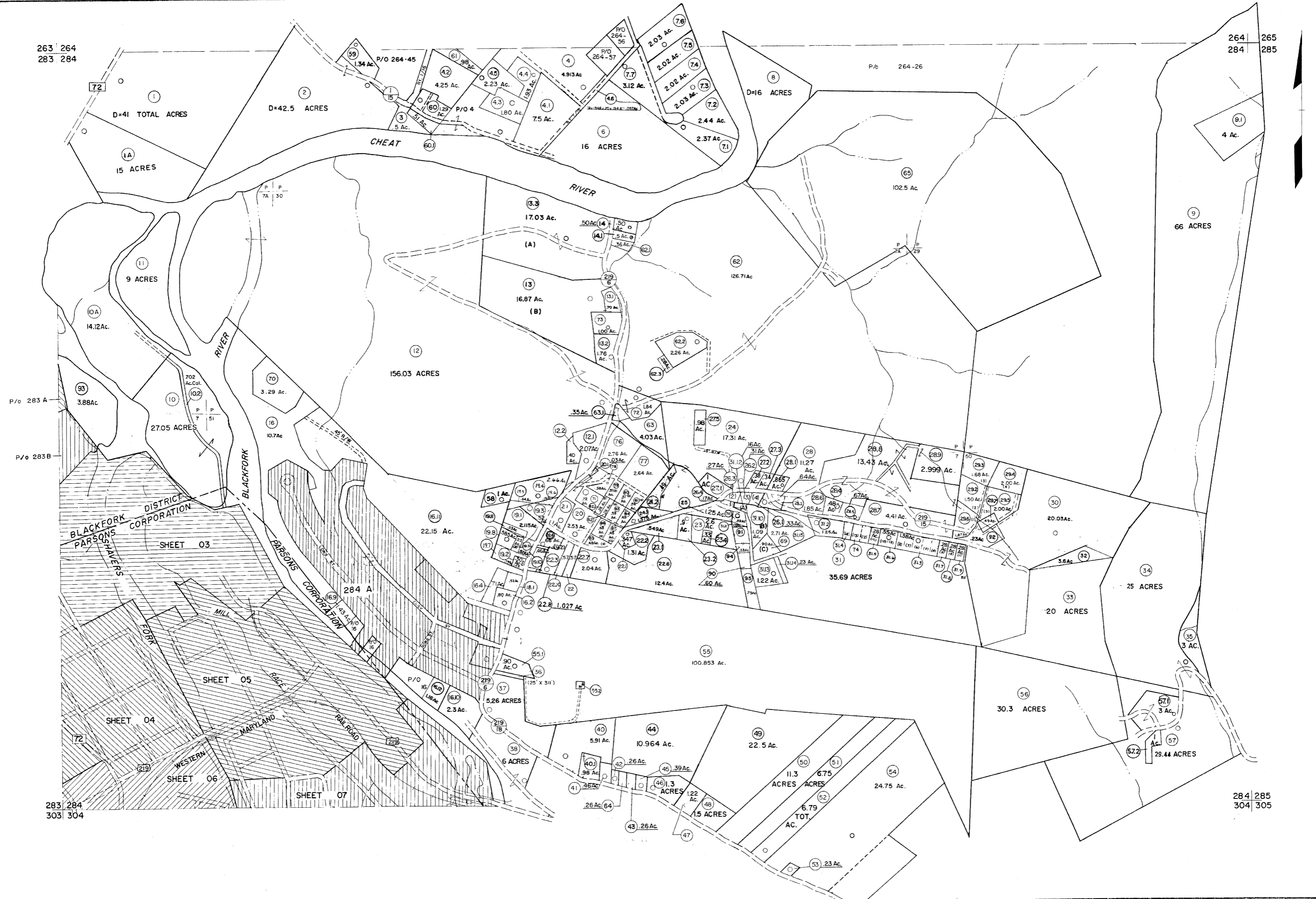


263 264
283 284

264 265
284 285



For Tax Purposes Only

Prepared by
MICHAEL BAKER, JR., INC.
Consulting Engineers
Rochester, Pennsylvania

Legend	
Property line	Original lot line
Edge of pavement or roadway	Deed lot number (15)
Corporation line	Parcel or index number (22)
District line	Improvement (O)
County line	Railroad

Revisions			
1	10-3-63	9	Revised to 1-18-82
2	6-3-64	10	REV TO 3-1-89 R.E.B
3	6-4-75	11	OGIS 1/1/91 DSH
4	11-20-78	12	OGIS 3-19-92 TL
5	Revised to 7-1-85	13	OGIS 1/27/93 DSH
6	7-1-84	14	OGIS 12/13/93 SAJ
7	Revised to 4-1-88	15	OGIS 2-95 HD
8	July, 1986	16	O.G.S. 4-1-96 J.E.B
9		17	SLS INC. - DDC 5/97
10		18	SLS INC. 2/25/98 JWM
11		19	SLS INC. 1/27/99 DSW
12		20	SLS INC. 3/2/00 JWM
13		21	ESI 1/31/01 REK
14		22	ESI 2/8/02 REK
15		23	ESI 2/20/03 REK
16		24	HBS 2/19/04

KEY MAP

3/21/05 S & H

TUCKER COUNTY
STATE OF WEST VIRGINIA
Office of Assessor

3/24/07 S & H

DISTRICT BLACKFORK

SHEET NO: 284

Date, Aerial Photography: November, 1961 Date, Map: Dec., 1962
Photo No: Scale: 1" = 400'