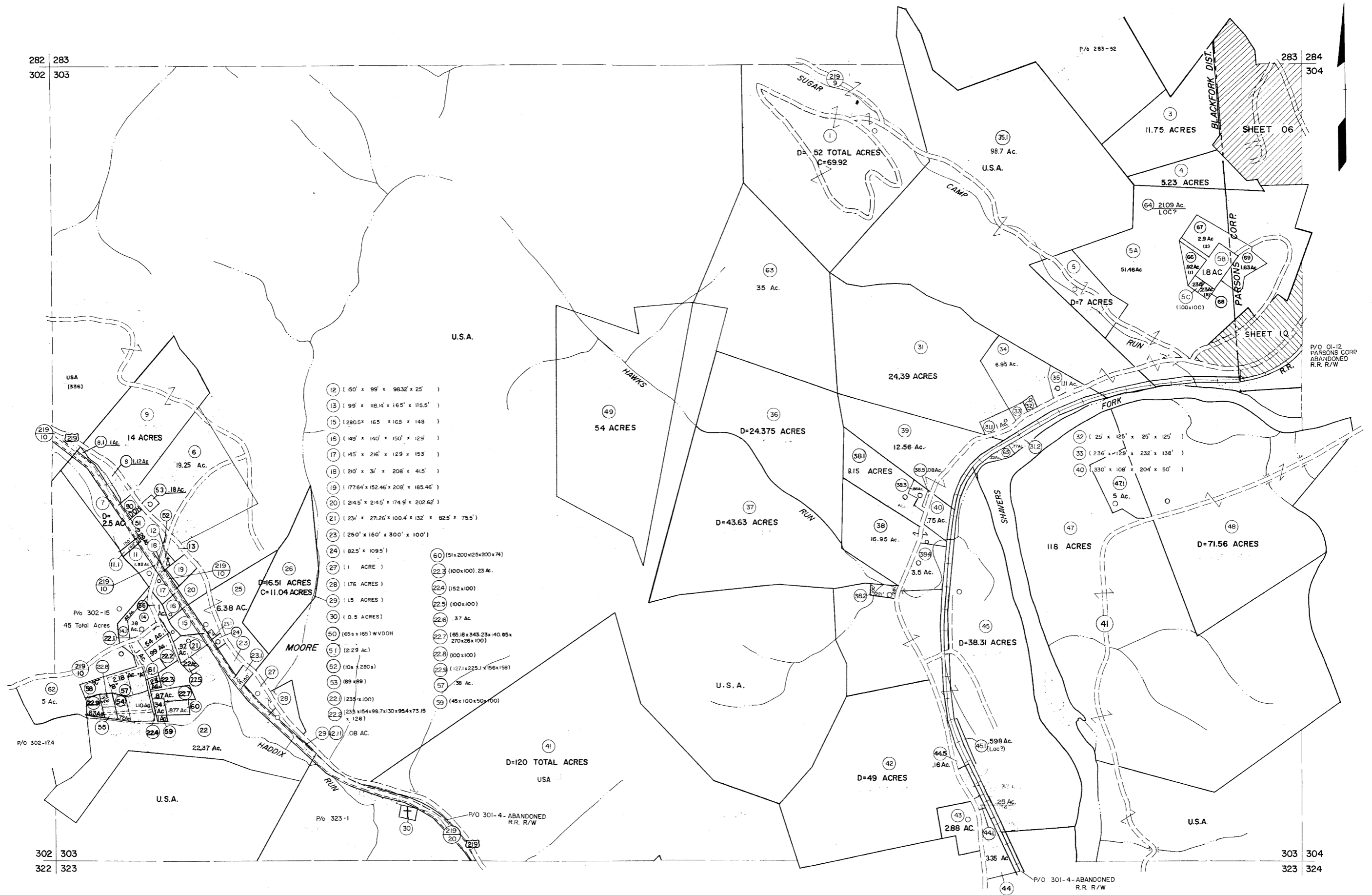


282 283  
302 303

283 284  
304 304



12	1150' x 99' x 9832' x 25'
13	99' x 118.14' x 165' x 115.5'
15	280.5' x 165' x 165' x 148'
16	149' x 140' x 150' x 129'
17	145' x 216' x 129' x 153'
18	210' x 31' x 208' x 415'
19	1776.4' x 152.46' x 208' x 165.46'
20	214.5' x 214.5' x 174.9' x 202.62'
21	231' x 27.26' x 100.4' x 132' x 82.5' x 75.5'
23	250' x 180' x 300' x 100'
24	82.5' x 109.5'
27	11 ACRE
28	176 ACRES
29	115 ACRES
30	10.9 ACRES
50	65.8 x 165' WVDON
51	2.29 Ac.
52	10s x 280s
53	189 x 89
22	1239 x 100
22.3	235 x 154 x 99.7 x 30 x 95.4 x 73.15 x 128
29	12.11 .08 AC.
60	51 x 200 x 125 x 200 x 74
22.3	100 x 100. 23 Ac.
22.4	152 x 100
22.5	100 x 100
22.6	.37 Ac.
22.7	65.18 x 343.23 x 140.85 x 270 x 26 x 100
22.8	100 x 100
22.9	127.1 x 225.1 x 156 x 158
57	.38 Ac.
59	45 x 100 x 50 x 100

Legend

Property line	---	Original lot line	---
Edge of pavement or roadway	---	Deed lot number	(15)
Corporation line	---	Parcel or index number	(99)
District line	---	Improvement	O
County line	---	Railroad	+

Revisions

1	10-3-63	9	OGIS 1/2/91	DSH	17	SLS INC. 3/3/98	JWM
2	6-4-75	10	OGIS 3-19-92	TL	18	ESI 2/1/01	REK
3	Revised to 7-1-85	11	OGIS 1/29/93	DSH	19	ESI 2/8/02	REK
4	7-1-84	12	OGIS 12/11/93	SAJ	20	ESI 2/20/03	REK
5	11-1985	13	OGIS 4-95	HD	21	HSS 2/19/04	
6	July 1985	14	O.G.I.S. 4-1-96	J.E.B	22	3/21/05	S.B.H
7	Revised to 7-1-87	15	SLS INC. - DDC 5/97		23	6-22-08	H.S
8	Revised to 3-1-89	16	SLS INC. - DDC 7/97		24	6-21-09	H.S

KEY MAP



For Tax Purposes Only

Prepared by  
MICHAEL BAKER, JR., INC.  
Consulting Engineers  
Rochester, Pennsylvania

TUCKER COUNTY  
STATE OF WEST VIRGINIA  
Office of Assessor

DISTRICT

BLACKFORK

SHEET NO: 303

Date, Aerial Photography: November, 1961 Date, Map: Dec, 1962  
Photo No: Scale: 1" = 400'