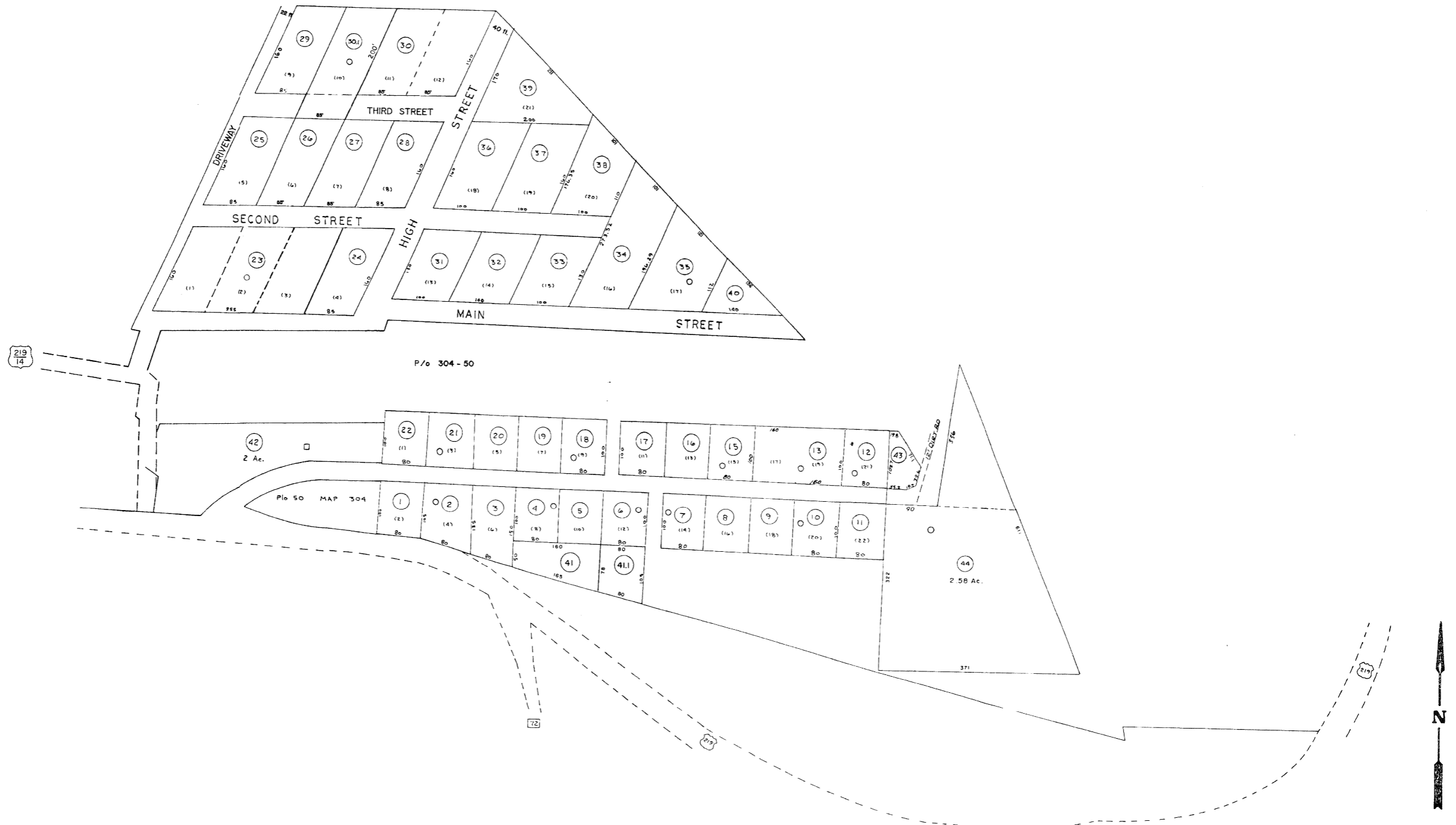


PURNELL SUB-DIV.



For Tax Purposes Only

Prepared by
LOCAL GOVERNMENT RELATIONS DIV.
STATE TAX COMMISSIONER
CHARLESTON, W.VA.

LEGEND

Property line ———
Edge of pavement or roadway - - - -
Corporation line - - - - -
District line - - - - -
County line - - - - -

Original lot line ———
Dead lot number (15)
Parcel or index number (P)
Improvement (I)
Railroad (R)

REVISIONS

1	6-4-75	J.C.
2	11-28-78	D.G.
3	Revised to 7-1-83	T.P.
4	D.G.S. 3-19-82	T.L.
5	D.G.S. 4-1-98	J.E.B.
6	SLS INC. - DDC 5/97	
7	SLS INC. 3/3/98	J.W.M.
8	SLS INC. 1/28/99	D.S.W.
9	ESI 2/1/01	REK
	ESI 2/20/03	REK
	6-21-09	H # 5

RESTRICTION

All tax maps created under the provisions of reappraisal legislation are the property of the State of West Virginia and the reproduction, copying, distribution or sale of such tax maps or any copies thereof without the written permission of the State Tax Commissioner is prohibited by law.

KEY MAP



TUCKER COUNTY

STATE OF WEST VIRGINIA

OFFICE OF ASSESSOR

BLACKFORK

304-A

Date, Aerial Photography:
Photo No:

Date, Map:
Scale: 1" = 100'