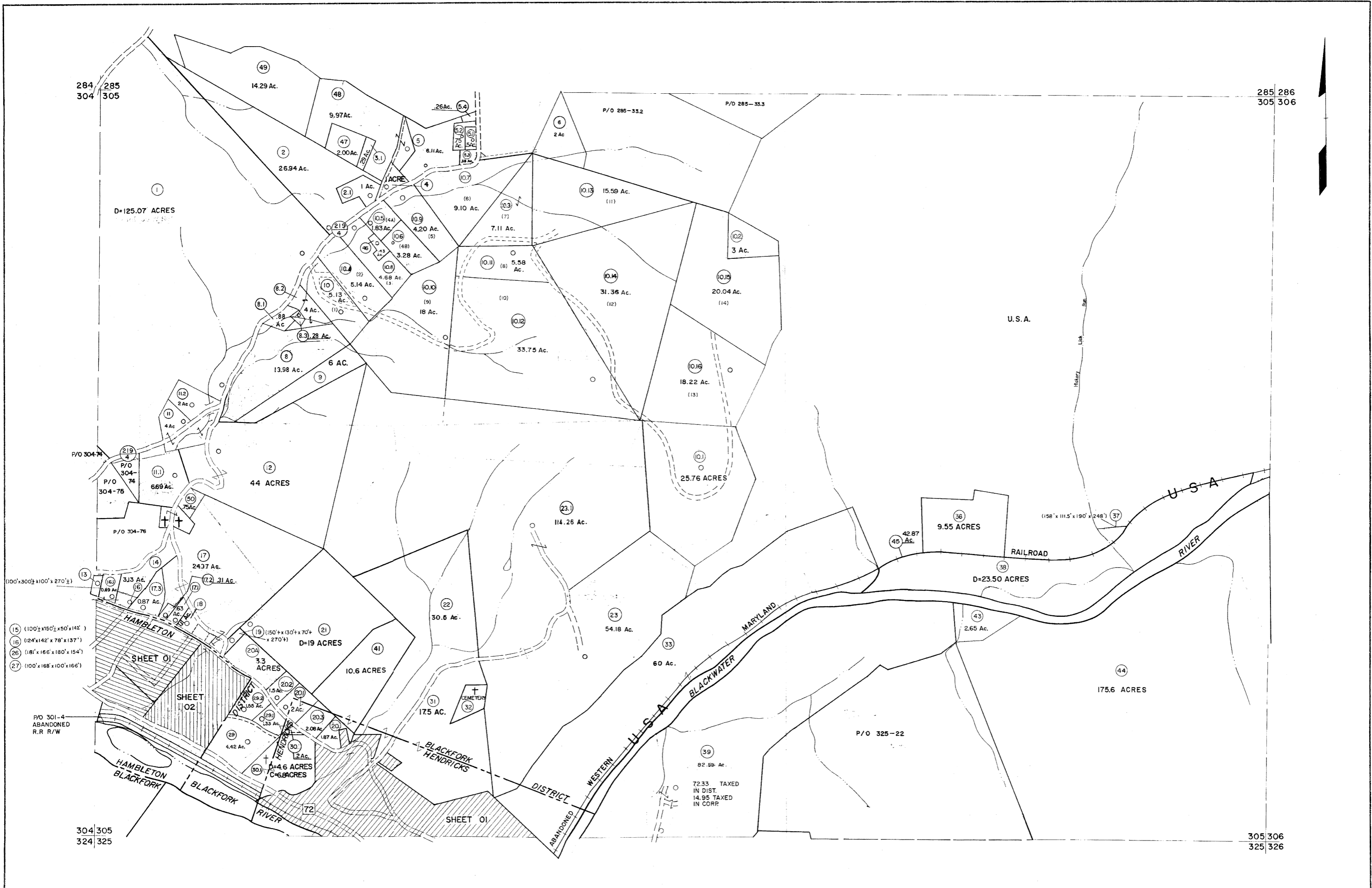


284 285
304 305

285 286
305 306



- 15 (100'±x150'±x50'±x142')
- 16 (124'±x142'±x78'±x137')
- 26 (181'±x166'±x180'±x154')
- 27 (100'±x168'±x100'±x166')

For Tax Purposes Only
 Prepared by
MICHAEL BAKER, JR., INC.
 Consulting Engineers
 Rochester, Pennsylvania

Legend	
Property line	—
Edge of parcel or roadway	- - - -
Corporation line	— · — · —
District line	- - - - -
County line	— · — · —
Original lot line	- - - - -
Deed lot number	(15)
Parcel or index number	(22)
Improvement	○
Railroad	— + —

Revisions			
1	10-3-63	9	OGIS 1/4/91 DSH
2	6-3-75	10	OGIS 3-19-92 TL
3	11-26-78 BAH	11	OGIS 1/30/93 DSH
4	Revised to 7-1-89	12	OGIS 12/11/93 SAJ
5	Revised to 7-1-85	13	OGIS 2-95 HD
6	July, 1986	14	O.G.I.S 4-1-96 J.E.B
7	Revised to 7-1-87	15	SLS INC. - DDC 5/97
8	Revised to 3-1-89	16	SLS INC. 3/3/98 JWM
17	SLS INC. 1/28/99 DSW	18	SLS INC. 3/2/00 JWM
19	ESI 2/1/01 REK	19	ESI 2/20/02 REK
20	ESI 2/19/04	20	S.B.H
21	S.B.H	21	S.B.H
22	S.B.H	22	S.B.H
23	S.B.H	23	S.B.H
24	S.B.H	24	S.B.H

KEY MAP
 285
 304 305 306
 325

TUCKER COUNTY
 STATE OF WEST VIRGINIA
 Office of Assessor

DISTRICT **BLACKFORK**
SHEET NO: 305
 Date, Aerial Photography: November, 1961 Date, Map: Dec, 1962
 Photo No: Scale: 1" = 400'