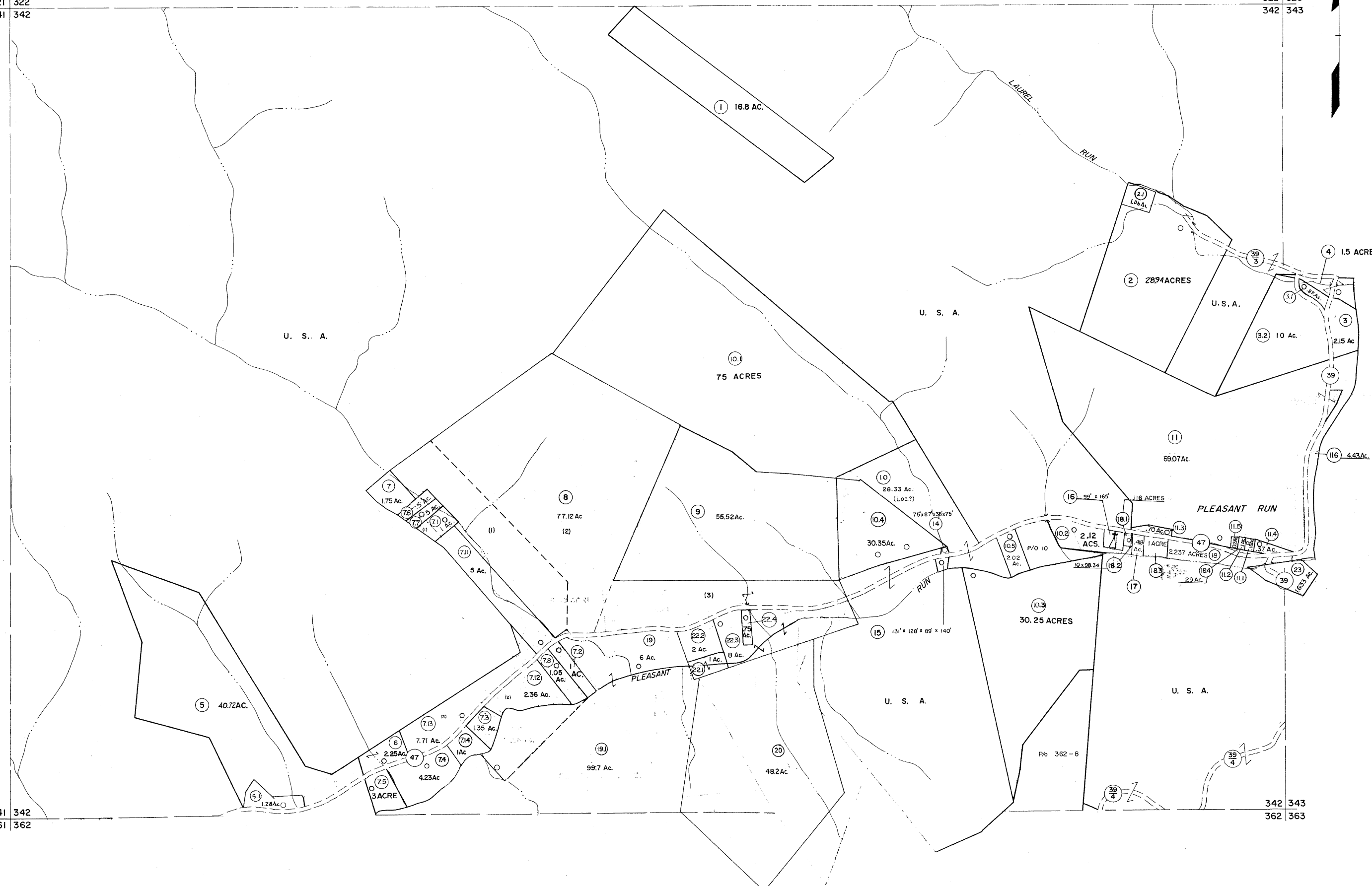


321 322
341 342

322 323
342 343

341 342
361 362

342 343
362 363



For Tax Purposes Only
Prepared by
MICHAEL BAKER, JR., INC.
Consulting Engineers
Rochester, Pennsylvania

Legend	
Property line	—
Edge of pavement or roadway	- - - -
Corporation line	- · - · -
District line	- - - - -
County line	- · - · -
Original lot line	- - - - -
Dead lot number	(15)
Parcel or index number	(99)
Improvement	○
Railroad	—+—+—+—

Revisions			
1	6-4-75	T.B.	9
2	11-27-78	D.E.	10
3	Revised to 7-1-85		11
4	Revised to 7-1-85		12
5	Revised to 7-1-87		13
6	Rev. to 3-1-89	R.E.B.	14
7	OGIS 3-19-92	TL	15
8			16
9	OGIS 1/31/93	DSH	17
10	OGIS 12/12/93	SAJ	18
11	OGIS 2-95	HD	19
12	O.G.I.S 4-1-96	J.E.B.	20
13	SLS INC. - DDC 5/97		21
14	SLS INC. 3/3/98	J.W.M.	22
15	SLS INC. 1/28/99	DSW	23
16	SLS INC. 3/2/00	J.W.M.	24



TUCKER COUNTY
STATE OF WEST VIRGINIA
Office of Assessor

DISTRICT
BLACKFORK
SHEET NO: 342
Date, Aerial Photography: November, 1961 Date, Map: Dec., 1962
Photo No: Scale: 1" = 400'