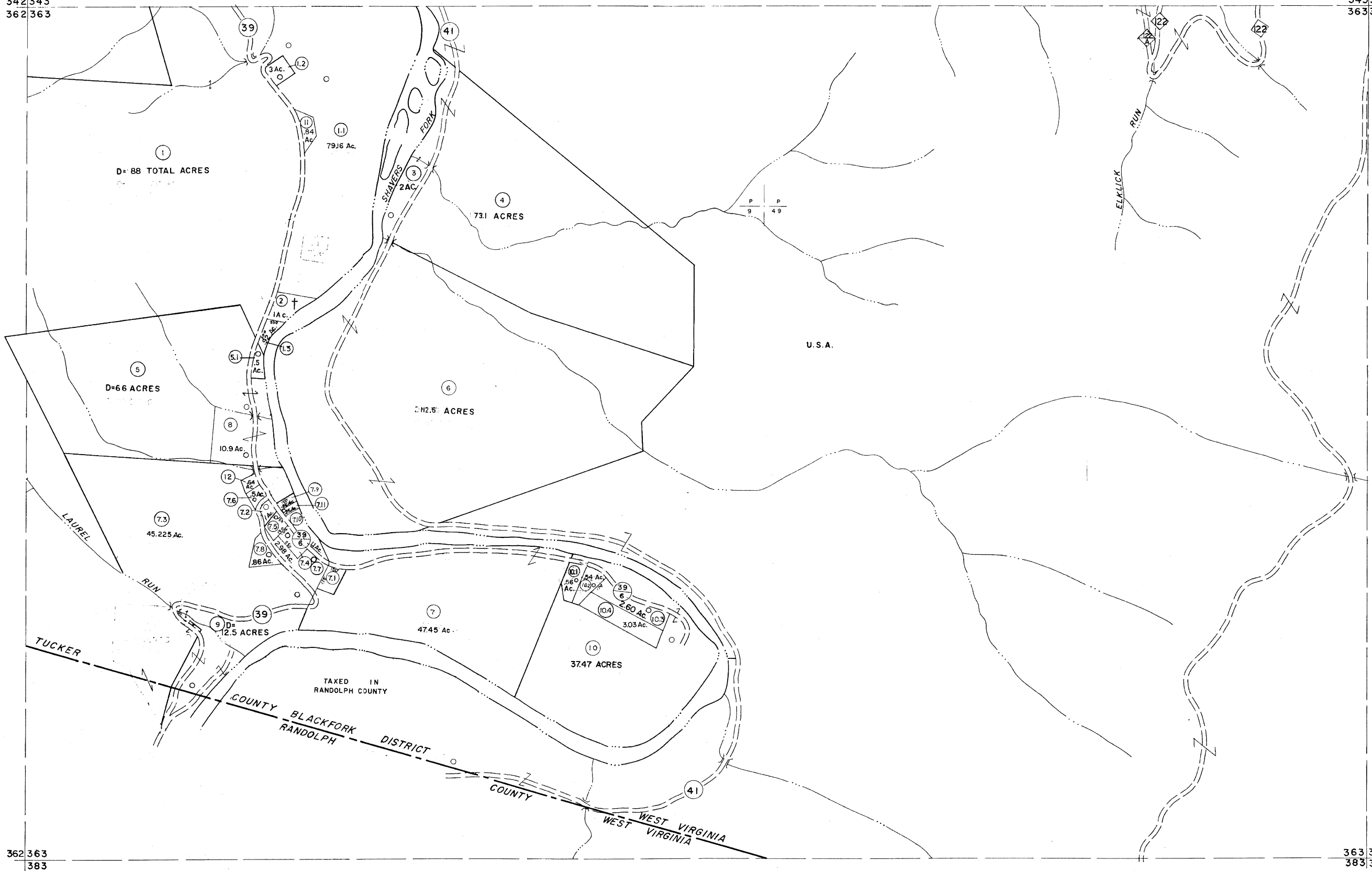


342343  
362363

343344  
363364



362363  
383

363364  
383384

For Tax Purposes Only

Prepared by  
MICHAEL BAKER, JR., INC.  
Consulting Engineers  
Rochester, Pennsylvania

Legend	
Property line	—
Edge of pavement or roadway	- - - -
Corporation line	— · — · —
District line	- - - - -
County line	- - - - -
Original lot line	—
Dead lot number	(S)
Parcel or index number	(N)
Improvement	○
Railroad	—+—+—+—

Revisions	
1	6-3-75 J.C.
2	11/22/78 D.G.
3	Revised to 7-1-88
4	7-1-84 L.E.S.
5	Revised to 7-27-87
6	Rev. to 3-1-89 R.E.B.
7	OGIS 1/6/91 DSH
8	OGIS 3-19-92 TL
9	OGIS 12/12/93 SAJ
10	SLS INC. - DDC 5/97
11	ESI 2/2/01 REK
12	3/28/06 SBH
13	6-21-09
14	
15	
16	



TUCKER COUNTY  
STATE OF WEST VIRGINIA  
Office of Assessor

DISTRICT	BLACKFORK
SHEET NO:	363
Date, Aerial Photography:	November, 1961
Date, Map:	Dec., 1962
Photo No:	
Scale:	1" = 400'