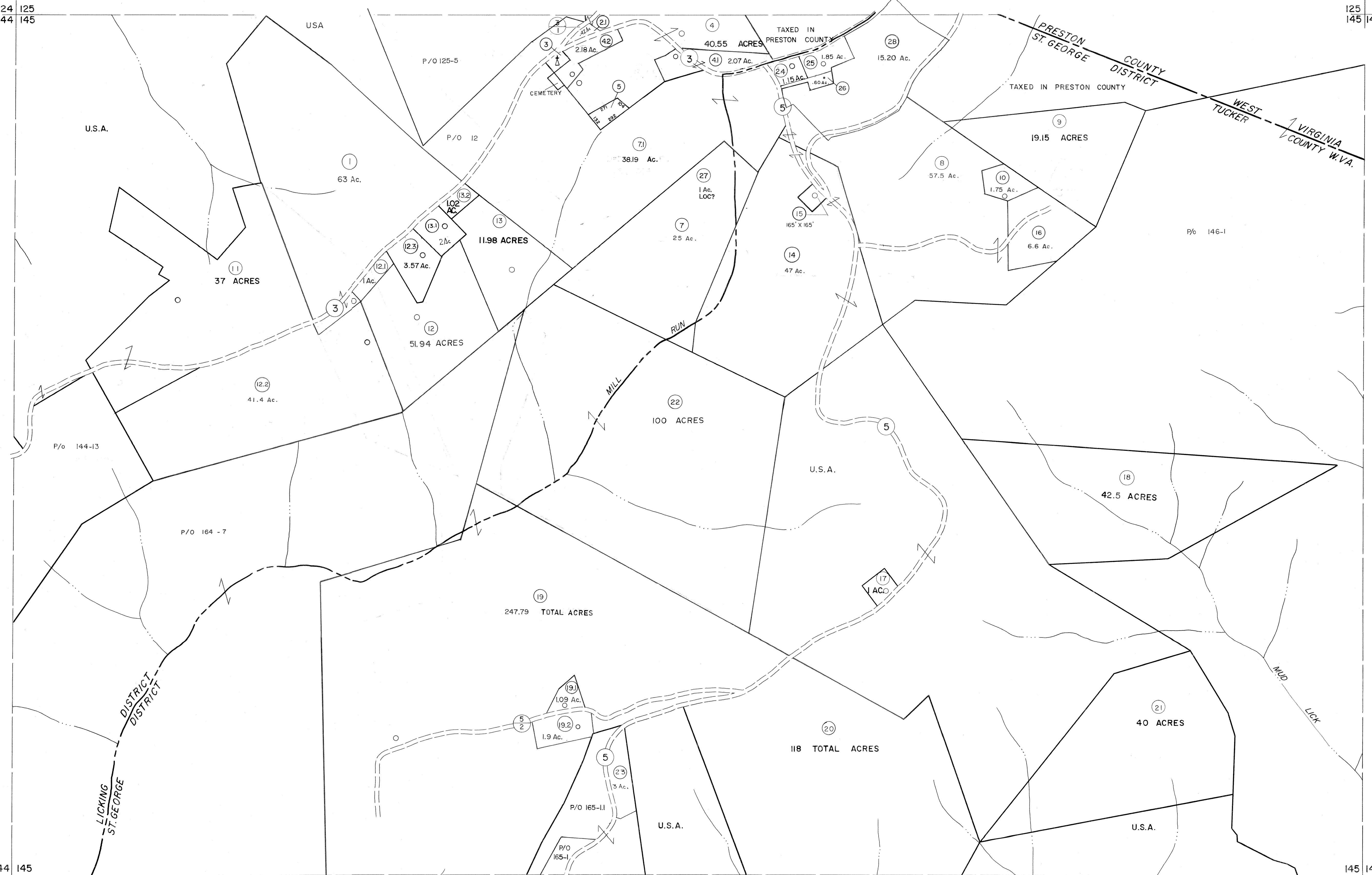


124 125  
144 145

125 146  
145 146

144 145  
164 165

145 146  
165 166



For Tax Purposes Only

Prepared by  
MICHAEL BAKER, JR., INC.  
Consulting Engineers  
Rochester, Pennsylvania

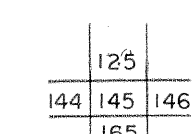
Legend

Property line	—	Original lot line	---
Edge of pavement or roadway	—	Deed lot number	(15)
Corporation line	---	Parcel or index number	(99)
District line	---	Improvement	o
County line	---	Railroad	+

Revisions

1	6-3-64	9	OGIS	1/24/93	DSH	17	ESI	2/7/02	REK
2	6-9-75	10	OGIS	12/9/93	SAJ	18	3/28/06	S&H	
3	11-16-78	11	O.G.I.S	4-1-96	J.E.B	19	3/24/07	S&H	
4	Revised to 7-1-83	12	SLS INC.	- DDC	5/97	20			
5	7-1-84	13	SLS INC.	2/19/98	DSW	21			
6	REV. TO 3-1-89	14	SLS INC.	1/27/99	DSW	22			
7	OGIS	15	SLS INC.	3/1/00	JWM	23			
8	OGIS	16	ESI	1/30/01	REK	24			

KEY MAP



TUCKER COUNTY  
STATE OF WEST VIRGINIA  
Office of Assessor

DISTRICT  
LICKING  
ST. GEORGE

SHEET NO: 145

Date, Aerial Photography: November, 1961 Date, Map: Dec., 1962  
Photo No: Scale: 1"=400'