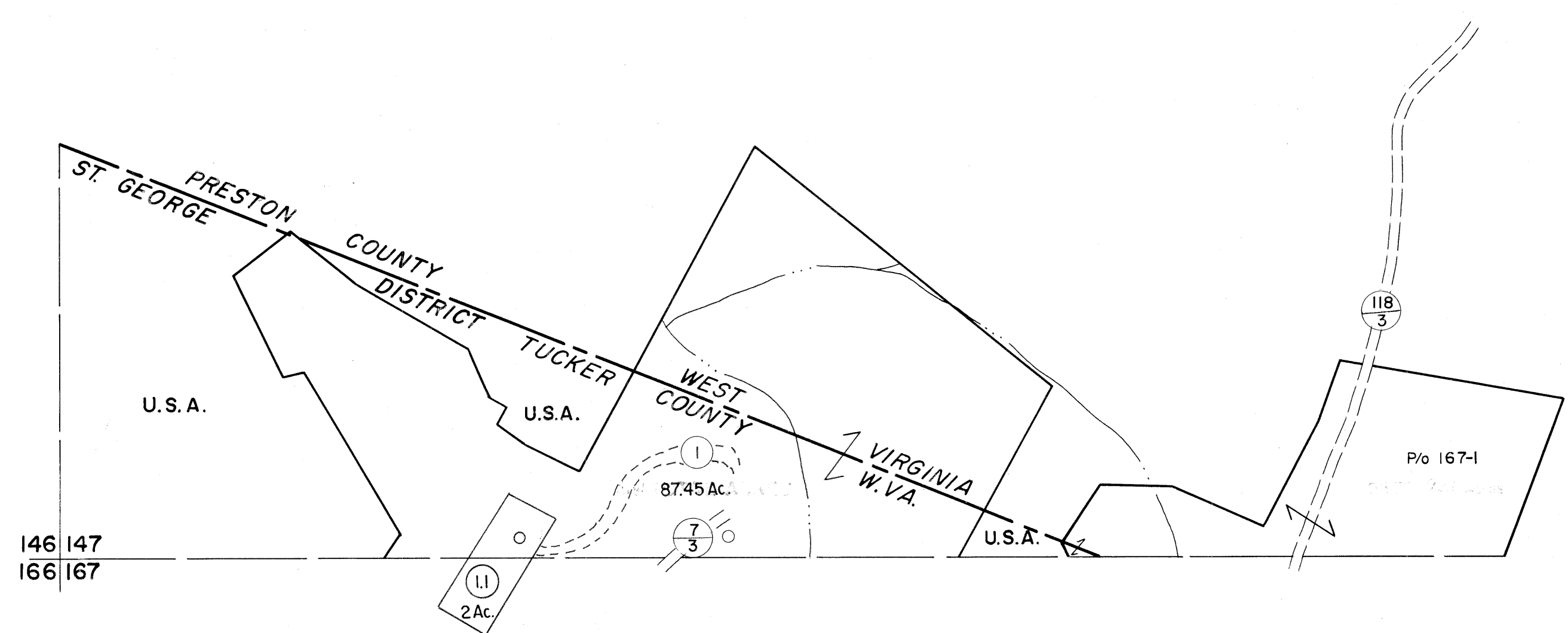


146|147

147



146 147
166 167

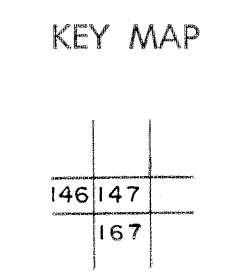
147
167 168

For Tax Purposes Only

Prepared by
MICHAEL BAKER, JR., INC.
Consulting Engineers
Rochester, Pennsylvania

Legend	
Property line	Original lot line
Edge of pavement or roadway	Deed lot number
Corporation line	Parcel or index number
District line	Improvement
County line	Railroad

Revisions	
1	11/16/78 DG 9
2	Revision 7-1-83 DF 10
3	OGIS 12/30/90 DSH 11
4	HBS 2/22/04 12
5	13
6	14
7	15
8	16



TUCKER COUNTY
STATE OF WEST VIRGINIA
Office of Assessor

DISTRICT **ST. GEORGE**

SHEET NO: 147

Date, Aerial Photography: November, 1961 Date, Map: Dec, 1962
Photo No: Scale: 1" = 400'