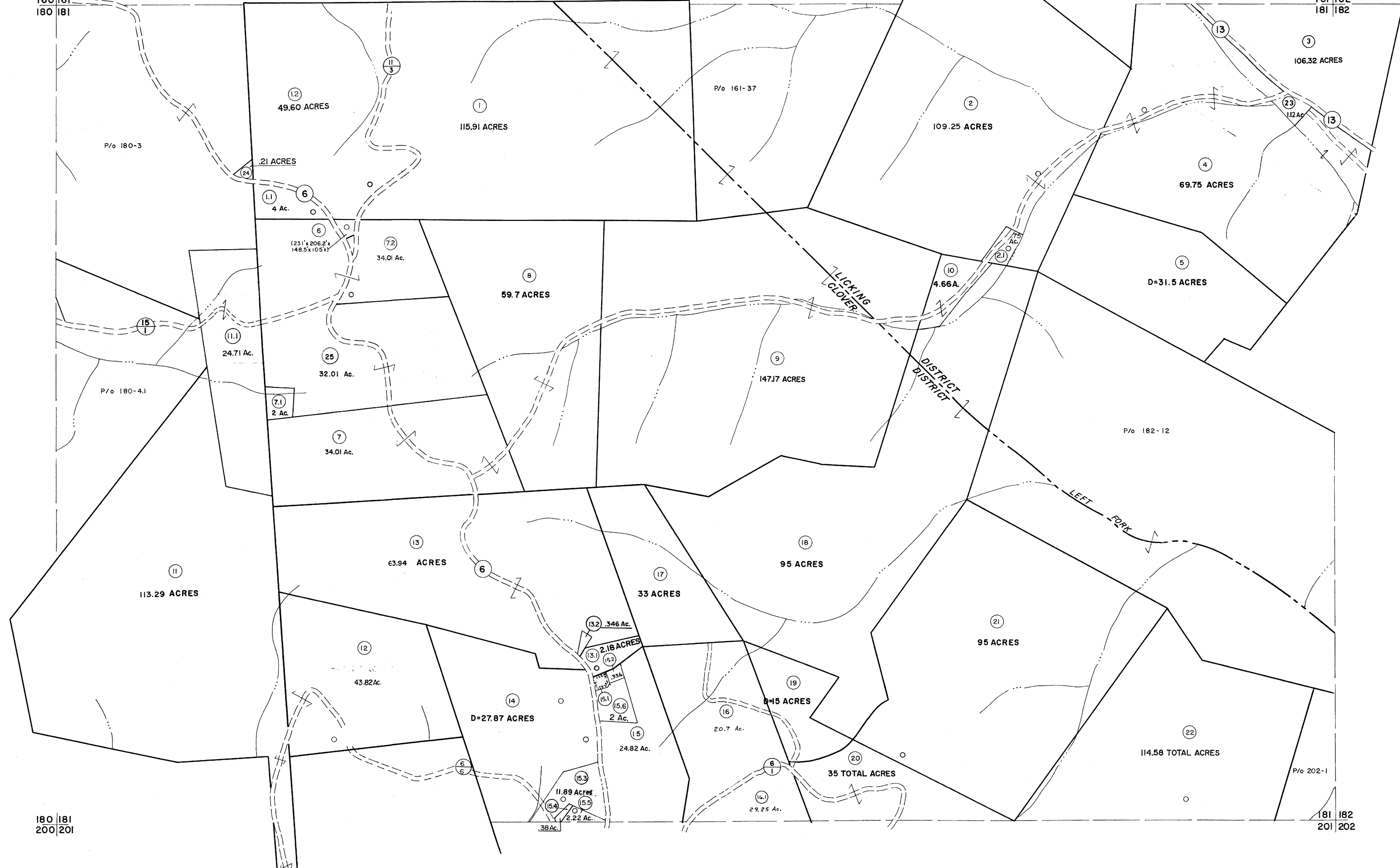


160 | 161  
180 | 181

161 | 162  
181 | 182



180 | 181  
200 | 201

181 | 182  
201 | 202

**For Tax Purposes Only**  
 Prepared by  
**MICHAEL BAKER, JR., INC.**  
 Consulting Engineers  
 Rochester, Pennsylvania

**Legend**

Property line	---	Original lot line	---
Edge of pavement or roadway	---	Deed lot number	(15)
Corporation line	---	Parcel or index number	(99)
District line	---	Improvement	o
County line	---	Railroad	---

**Revisions**

1	6-6-75	J.C.	9	SLS INC. - DDC	5/97	17	6-21-09	4-4-5
2	11/17/78	D.G.	10	SLS INC.	2/19/98	DSW	18	
3	REVISED TO 7-1-83		11	SLS INC.	1/27/99	DSW	19	
4	REV. TO 3-1-89	NCS	12	SLS INC.	3/1/00	JWM	20	
5	OGIS 1/6/91	DSH	13	ESI	1/31/01	REK	21	
6	OGIS 3-19-92	TL	14	HBS	2/22/04		22	
7	OGIS 1/24/93	DSH	15		3/21/05	S.B.H.	23	
8	OGIS 2-95	HD	16		3/24/07	S.B.H.	24	



**TUCKER COUNTY**  
 STATE OF WEST VIRGINIA  
 Office of Assessor

DISTRICT **LICKING CLOVER**  
 SHEET NO: 181  
 Date, Aerial Photography: Nov., 1961  
 Date, Map: Dec., 1962  
 Photo No: Scale: 1"=400'