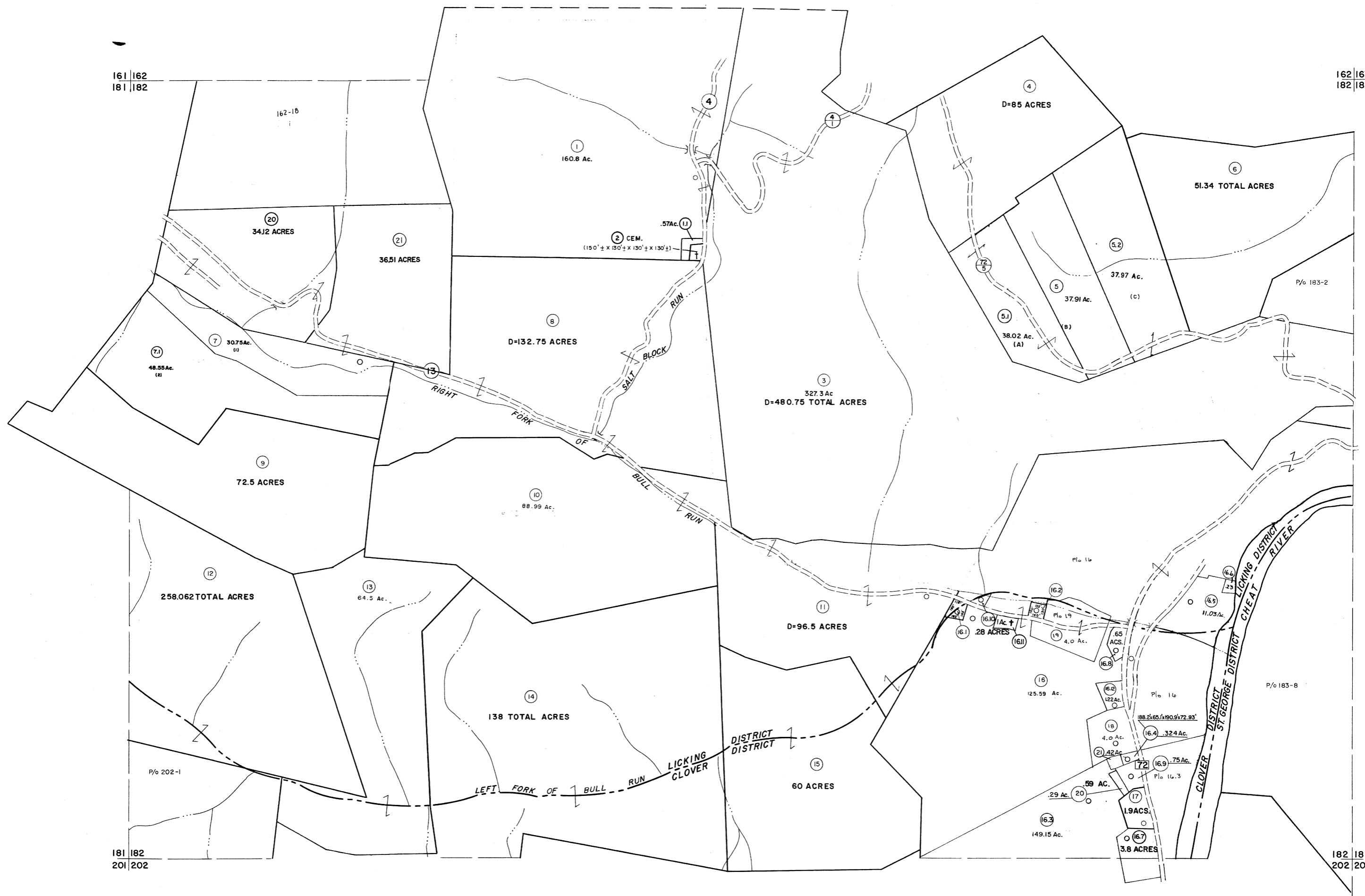


161 | 162
181 | 182

162 | 163
182 | 183



181 | 182
201 | 202

182 | 183
202 | 203

For Tax Purposes Only

Prepared by
MICHAEL BAKER, JR., INC.
Consulting Engineers
Rochester, Pennsylvania

Legend

Property line	—	Original lot line	---
Edge of pavement or roadway	==	Deed lot number	(15)
Corporation line	----	Parcel or index number	(99)
District line	- - - -	Improvement	o
County line	----	Railroad	—+—

Revisions

1	6-6-75	J.C.	9	O.G.I.S.	4-1-96	J.E.B.	17	3/26/07	S.B.H.
2	11-20-78	D.G.	10	S.L.S. INC.	3/1/00	J.W.M.	18	6-22-08	TT-45
3	REVISED TO 7-1-83		11	ES1	1/31/01	REK	19	6-21-09	TT-45
4	7-1-84	L.E.S.	12	ES1	2/7/02	REK	20		
5	REV. TO 7-1-85	N.C.S.	13	H.B.S.	2/22/04		21		
6	REV. TO 3-1-89	N.C.S.	14		3/21/05	S.B.H.	22		
7	O.G.I.S.	3-19-92	T.L.		3/28/06	S.B.H.	23		
8	O.G.I.S.	12/11/93	S.A.J.				24		

KEY MAP



TUCKER COUNTY
STATE OF WEST VIRGINIA
Office of Assessor

DISTRICT **LICKING CLOVER ST. GEORGE**

SHEET NO: 182

Date, Aerial Photography: Nov., 1961
Photo No: _____
Date, Map: Dec., 1962
Scale: 1" = 400'