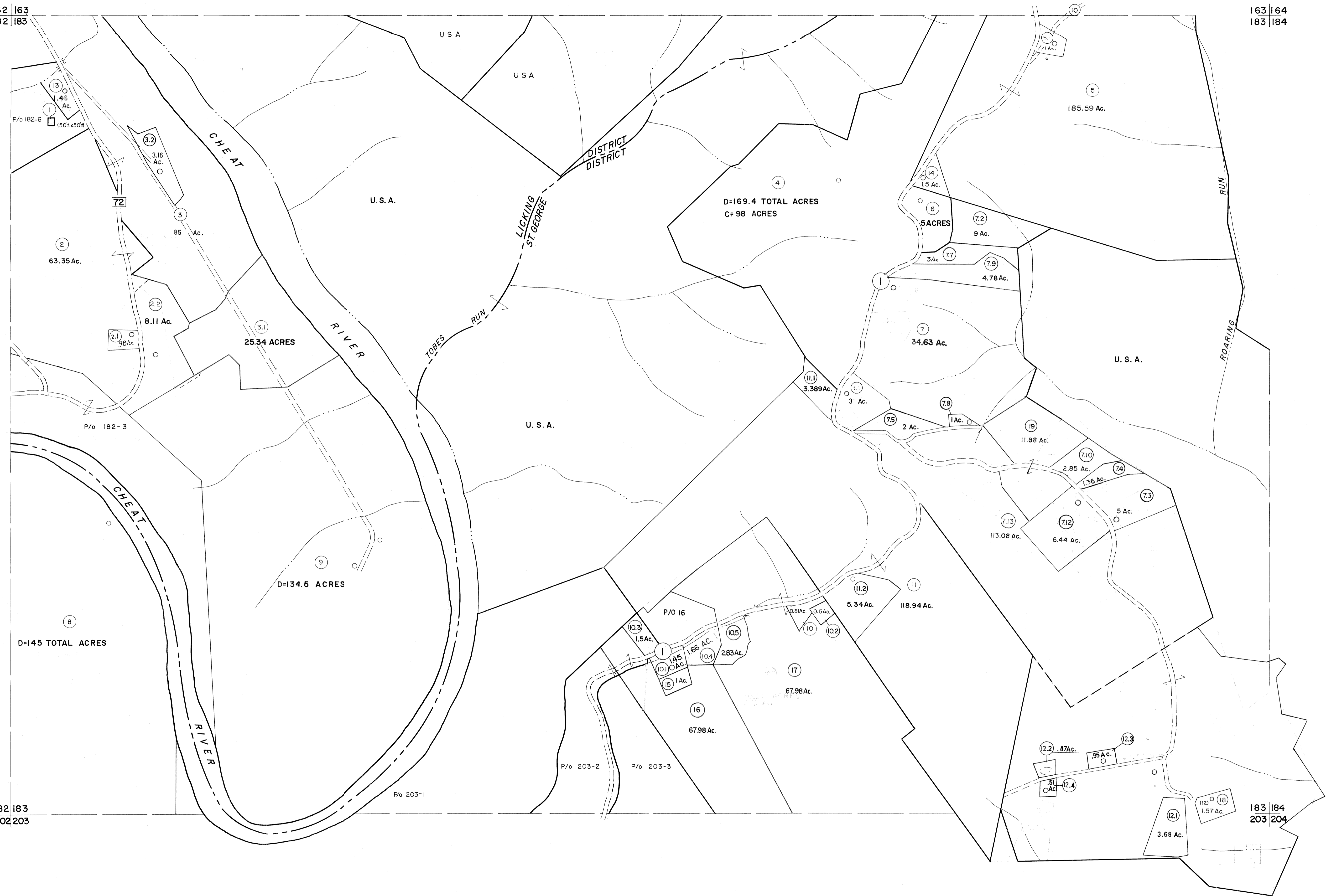


162 | 163
182 | 183

163 | 164
183 | 184



For Tax Purposes Only

Prepared by
MICHAEL BAKER, JR., INC.
Consulting Engineers
Rochester, Pennsylvania

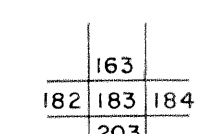
Legend

Property line	—	Original lot line	---
Edge of pavement or roadway	—	Deed lot number	(15)
Corporation line	---	Parcel or index number	(22)
District line	---	Improvement	○
County line	---	Railroad	—+—

Revisions

1	6-6-75	JC	9	OGIS	3-19-92	TL	17
2	11/20/78	DG	10	OGIS	1/24/93	DSH	18
3	7-1-83	C.R.	11	OGIS	12/11/93	SAJ	19
4	7-1-84	L.E.S.	12	SLS INC.	2/19/98	DSW	20
5	REV TO 7-1-86	NCS	13	HAS	2/22/04		21
6	Revised 11-1-87	DS	14		3/21/05	S&H	22
7	REV TO 3-1-89	NCS	15		3/24/07	S&H	23
8	OGIS	12/30/90	DSH	16			24

KEY MAP



TUCKER COUNTY
STATE OF WEST VIRGINIA
Office of Assessor

DISTRICT
**LICKING
ST. GEORGE**

SHEET NO: 183

Date, Aerial Photography: Nov., 1961
Photo No: Date, Map: Dec., 1962
Scale: 1" = 400'