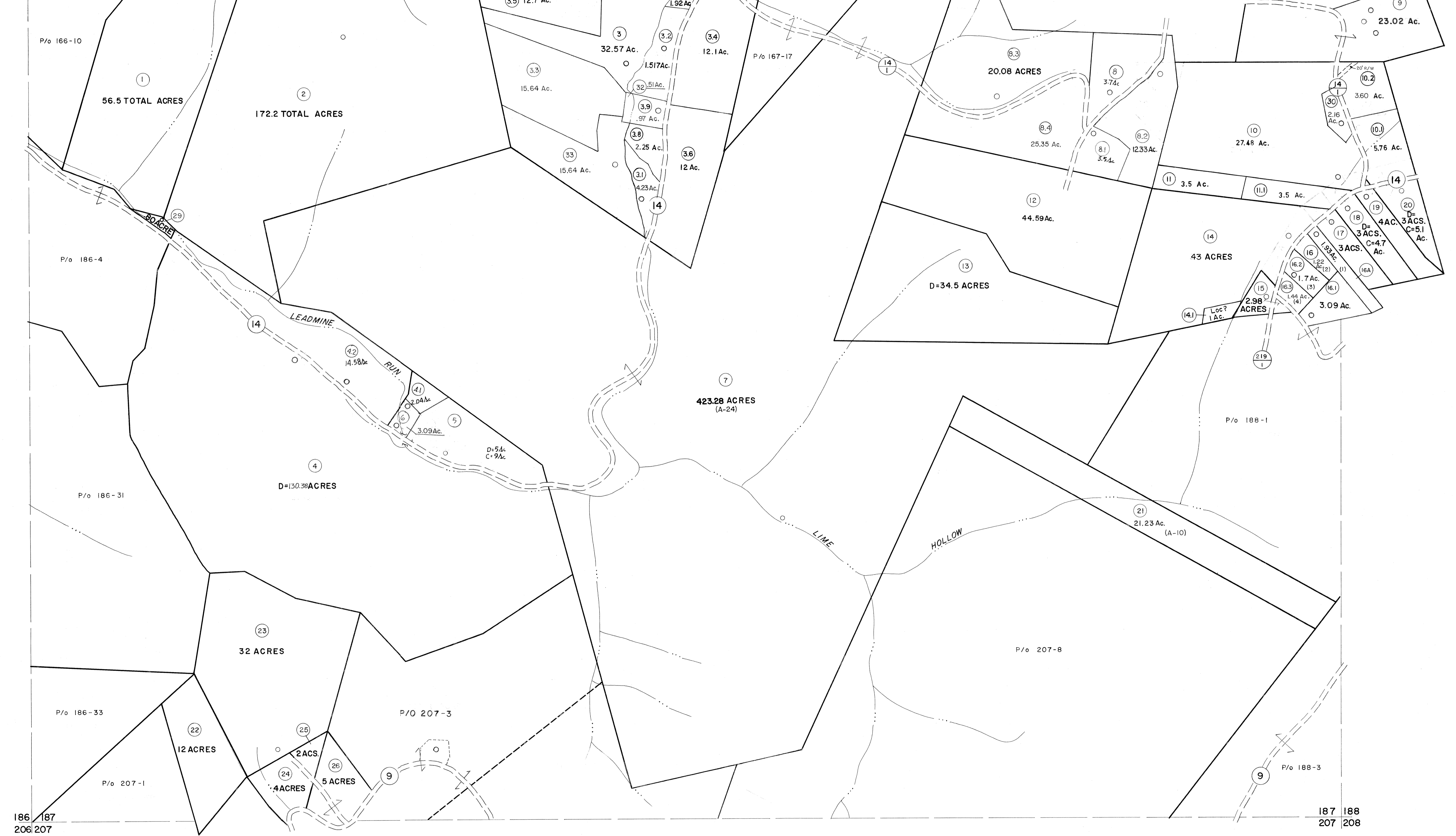


166 167  
186 187

167 168  
187 188



186 187  
206 207

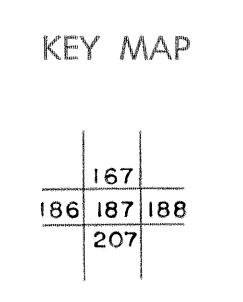
187 188  
207 208

For Tax Purposes Only

Prepared by  
MICHAEL BAKER, JR., INC.  
Consulting Engineers  
Rochester, Pennsylvania

Legend	
Property line	Original lot line
Edge of pavement or roadway	Deed lot number (15)
Corporation line	Parcel or index number (29)
District line	Improvement
County line	Railroad

Revisions						
1	10-3-63 B.H.	9	OGIS 12/30/90 DSH	17	ESI 1/31/01	REK
2	11-20-78 D.A.	10	OGIS 3-19-92 T.L.	18	ESI 2/7/02	REK
3	To 7-1-83	11	OGIS 12/11/93 SAJ	19	ESI 2/20/03	REK
4	7-1-84 L.E.S.	12	OGIS 2-95 HD	20	HBS 2/22/04	
5	Revised to 7-1-85	13	O.G.I.S. 4-1-96 J.E.B.	21	3/28/06	S&H
6	REV TO 7-1-86 NCS	14	SLS INC. - DDC 5/97	22	3/24/07	S&H
7	Revised to 7-1-87	15	SLS INC. 2/19/98 DSW	23		
8	REV TO 3-1-89 NCS	16	SLS INC. 1/27/99 DSW	24		



TUCKER COUNTY  
STATE OF WEST VIRGINIA  
Office of Assessor

DISTRICT  
**ST. GEORGE**

SHEET NO: 187

Date, Aerial Photography: Nov, 1961 Date, Map: Dec, 1962  
Photo No: Scale: 1" = 400'