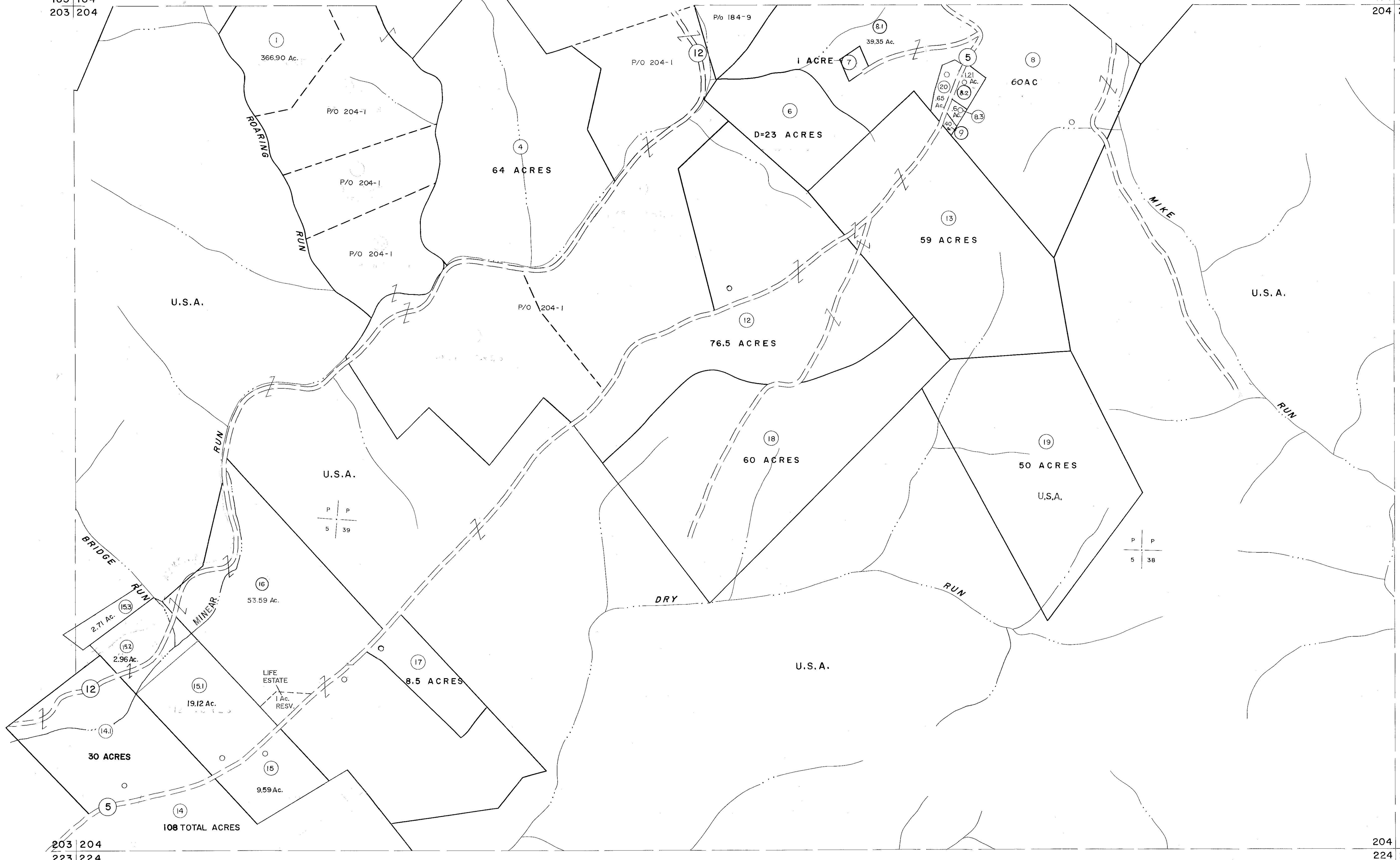


183 | 184  
203 | 204

184 | 185  
204 | 205



203 | 204  
223 | 224

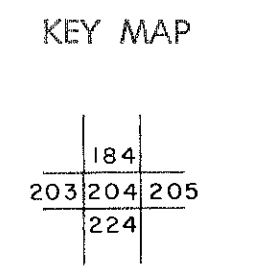
204 | 205  
224 | 225

For Tax Purposes Only

Prepared by  
MICHAEL BAKER, JR., INC.  
Consulting Engineers  
Rochester, Pennsylvania

Legend	
Property line	Original lot line
Edge of pavement or roadway	Deed lot number
Corporation line	Parcel or index number
District line	Improvement
County line	Railroad

Revisions			
1	10-3-63	9	O.G.I.S. 4-1-96 J.E.B. 17
2	11/20/78 DG	10	SLS INC. - DDC 5/97 18
3	1/25/83	11	SLS INC. 2/23/98 JWM 19
4	REV. TO 7-1-86 NCS	12	SLS INC. 3/1/00 JWM 20
5	OGIS 12/31/90 DSH	13	
6	OGIS 3-13-92 TL	14	
7	OGIS 1/25/93 DSH	15	
8	OGIS 2-95 HD	16	



TUCKER COUNTY  
STATE OF WEST VIRGINIA  
Office of Assessor

DISTRICT  
ST. GEORGE

SHEET NO: 204

Date, Aerial Photography: Nov., 1961 Date, Map: Dec., 1962  
Photo No: Scale: 1" = 400'