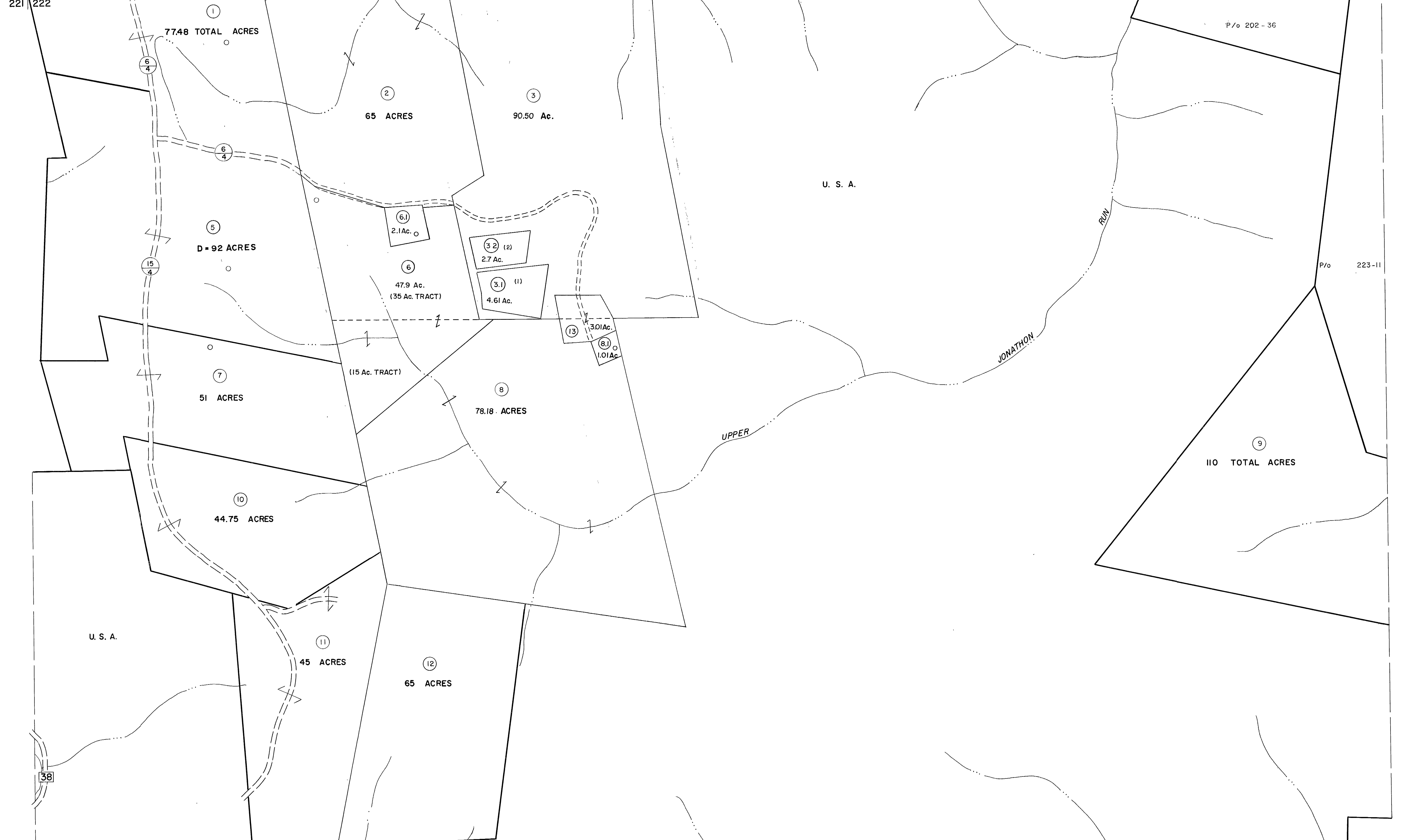


201 202  
221 222

202 203  
222 223

221 222  
241 242

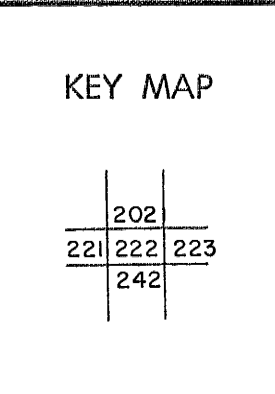
222 223  
242 243



For Tax Purposes Only  
 Prepared by  
**MICHAEL BAKER, JR., INC.**  
 Consulting Engineers  
 Rochester, Pennsylvania

Legend	
Property line	Original lot line
Edge of pavement or roadway	Deed lot number
Corporation line	Parcel or index number
District line	Improvement
County line	Railroad

Revisions	
1	July 1983
2	7-1-84 L.E.S.
3	REV. TO 3-1-89 R.E.B.
4	OGIS 1/25/93 DSH
5	OGIS 12/11/93 SAJ
6	OGIS 2-95 HD
7	SLS INC. - DDC 5/97
8	6/3/11 S&H



**TUCKER COUNTY**  
 STATE OF WEST VIRGINIA  
 Office of Assessor

DISTRICT	<b>CLOVER</b>
<b>SHEET NO: 222</b>	
Date, Aerial Photography: November, 1961	Date, Map: Dec, 1962
Photo No:	Scale: 1" = 400'