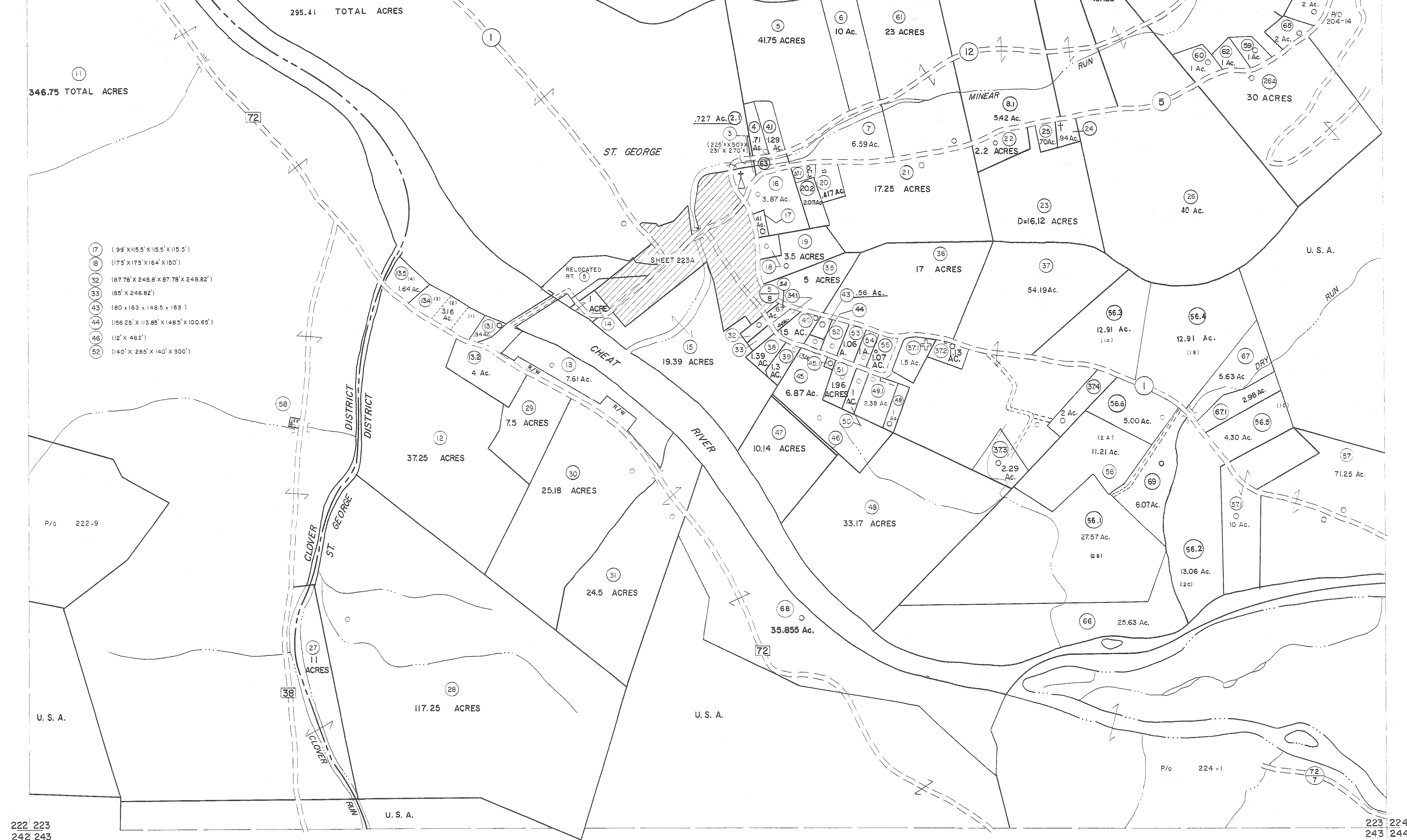


202 203
222 223

203 204
223 224



- 17 (99' x 115.5' x 115.5' x 115.5')
- 18 (173' x 173' x 164' x 150')
- 32 (87.78' x 248.8' x 87.78' x 248.82')
- 33 (85' x 248.82')
- 43 (80' x 163' x 148.5' x 163')
- 44 (156.25' x 113.85' x 148.5' x 100.65')
- 46 (12' x 462')
- 52 (140' x 285' x 140' x 300')

Legend

Property line	—	Original lot line	—
Edge of pavement or roadway	—	Dead lot number	(15)
Corporation line	—	Parcel or index number	(16)
District line	—	Improvement	o
County line	—	Railroad	—

Revisions

1	11-20-78	OG	9	OGIS	1/25/93	DSH	17	ESI	1/31/01	REK
2	1-1-83	TL	10	OGIS	12/11/93	SAJ	18	ESI	2/7/02	REK
3	7-1-84	L.E.S.	11	OGIS	2-95	HD	19	ESI	2/20/03	REK
4	Revised to 7-1-85		12	O.G.I.S.	4-1-96	J.E.B.	20	H.S.S.	2/22/04	
5	REV. TO 7-1-86	NCS	13	SLS INC.	-DDC 5/97		21		3/28/06	S.B.H.
6	REV. TO 3-1-89	R.E.B.	14	SLS INC.	2/23/98	J.W.M.	22		6-22-08	++4.5
7	OGIS 12/31/90	DSH	15	SLS INC.	1/27/99	DSW	23		6-21-09	++4.5
8	OGIS 3-19-92	TL	16	SLS INC.	3/1/00	J.W.M.	24		9-8-10	++4.5

6/23/11 S.B.H.
5-1-13 ++4.5
KEY MAP
5/26/15 S.B.H.

TUCKER COUNTY
STATE OF WEST VIRGINIA
Office of Assessor

DISTRICT CLOVER
ST. GEORGE

SHEET NO: 223

Date, Aerial Photography: November, 1961 Date, Map: Dec., 1962
Photo No. Scale: 1" = 400'

For Tax Purposes Only
Prepared by
MICHAEL BAKER, JR., INC.
Consulting Engineers
Rochester, Pennsylvania