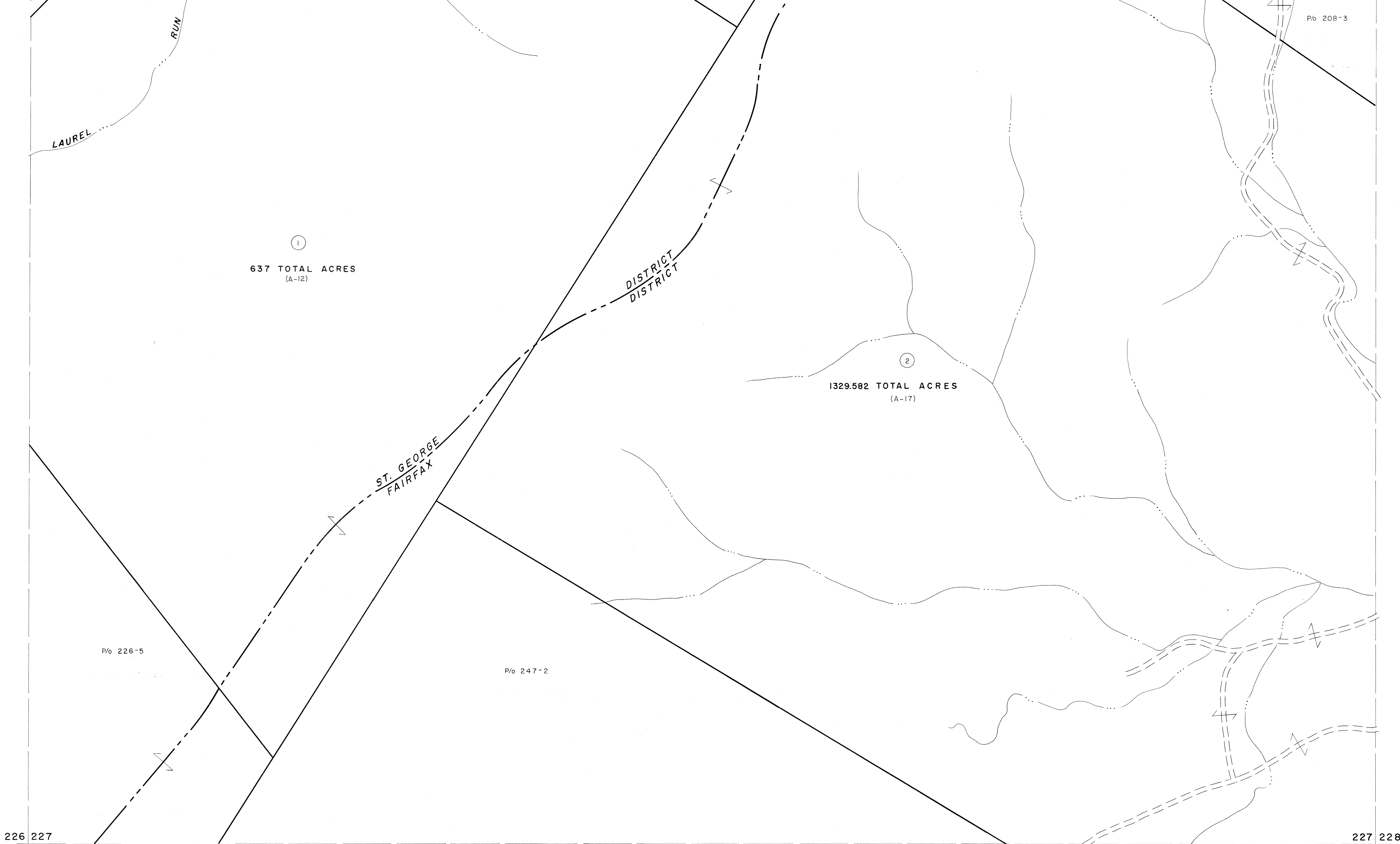


206 207
226 227

207 208
227 228



For Tax Purposes Only

Prepared by
MICHAEL BAKER, JR., INC.
Consulting Engineers
Rochester, Pennsylvania

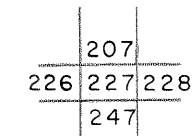
Legend

Property line	—————	Original lot line	-----
Edge of pavement or roadway	-----	Deed lot number	(15)
Corporation line	-----	Parcel or index number	(9)
District line	-----	Improvement	o
County line	-----	Railroad	+

Revisions

1	REV. TO 7-1-86	NCS	9	17
2	REV. TO 3-1-89	REB.	10	18
3			11	19
4			12	20
5			13	21
6			14	22
7			15	23
8			16	24

KEY MAP



TUCKER COUNTY
STATE OF WEST VIRGINIA
Office of Assessor

DISTRICT
FAIRFAX-ST. GEORGE

SHEET NO: 227

Date, Aerial Photography: Nov., 1961 Date, Map: Dec., 1962
Photo No: Scale: 1" = 400'