

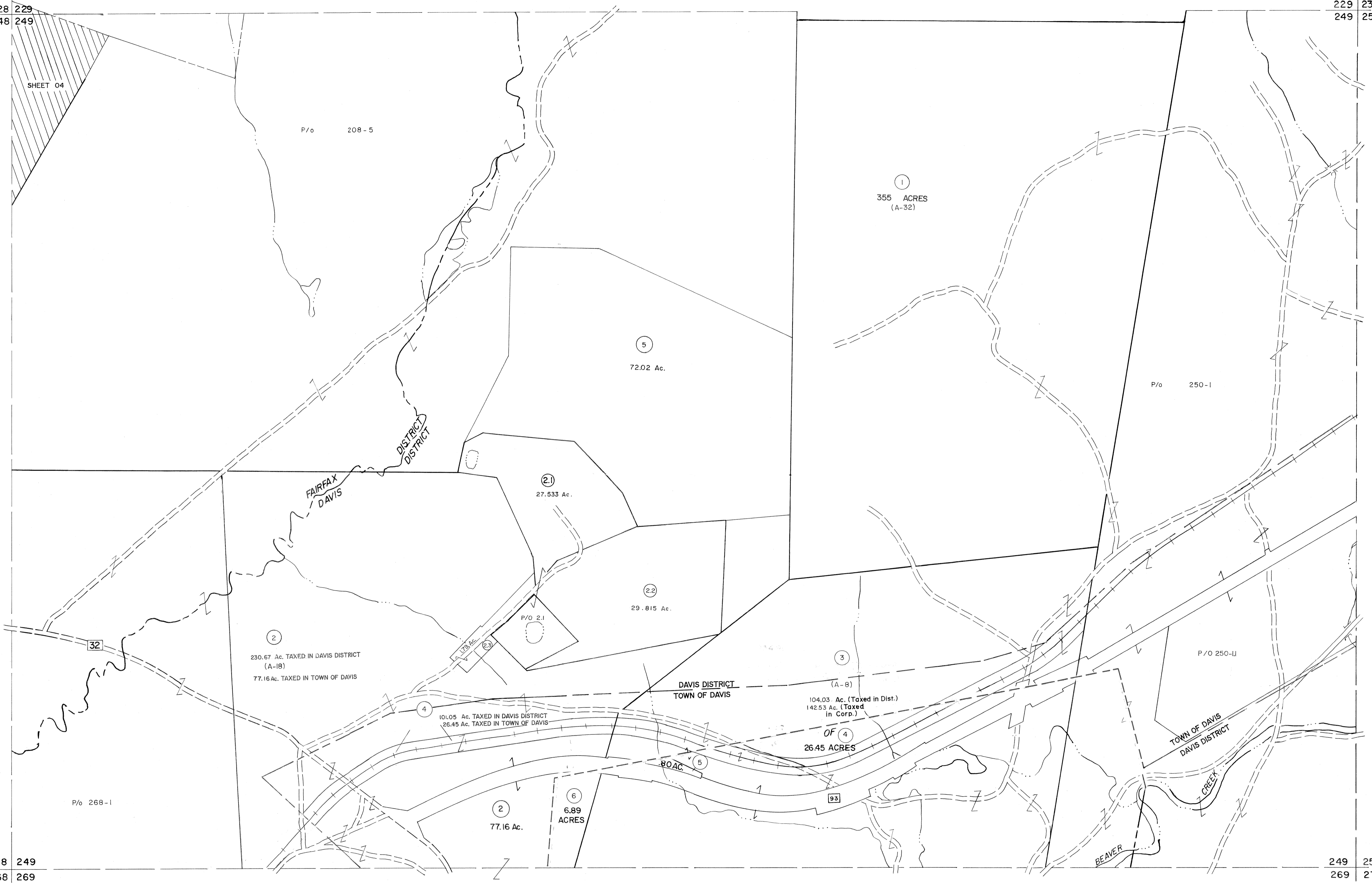
228 229
248 249

229 230
249 250

SHEET 04

248 249
268 269

249 250
269 270



For Tax Purposes Only

Prepared by
MICHAEL BAKER, JR., INC.
Consulting Engineers
Rochester, Pennsylvania

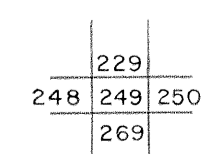
Legend

Property line	—	Original lot line	- - - - -
Edge of pavement or roadway	—	Deed lot number	(15)
Corporation line	- - - - -	Parcel or index number	(99)
District line	- - - - -	Improvement	o
County line	- - - - -	Railroad	—

Revisions

1	SAH 11-76	9	SLS INC. - DDC 7/97	17
2	Revised to 7-1-83	10	SLS INC. 2/23/98 JWM	18
3	REV TO 7-1-86 NCS	11	SLS INC. 1/27/99 DSW	19
4	OGIS 1/1/91 DSH	12	SLS INC. 3/1/00 JWM	20
5	OGIS 1/26/93 DSH	13	ESI 2/5/01 REK	21
6	OGIS 2-95 HD	14	3/21/05 SBH	22
7	O.G.I.S 4-1-96 J.E.B	15	3/24/07 SBH	23
8	SLS INC. - DDC 5/97	16		24

KEY MAP



TUCKER COUNTY
STATE OF WEST VIRGINIA
Office of Assessor

DISTRICT

DAVIS-FAIRFAX

SHEET NO: 249

Date, Aerial Photography: November, 1961 Date, Map: Dec., 1962
Photo No: Scale: 1" = 400'