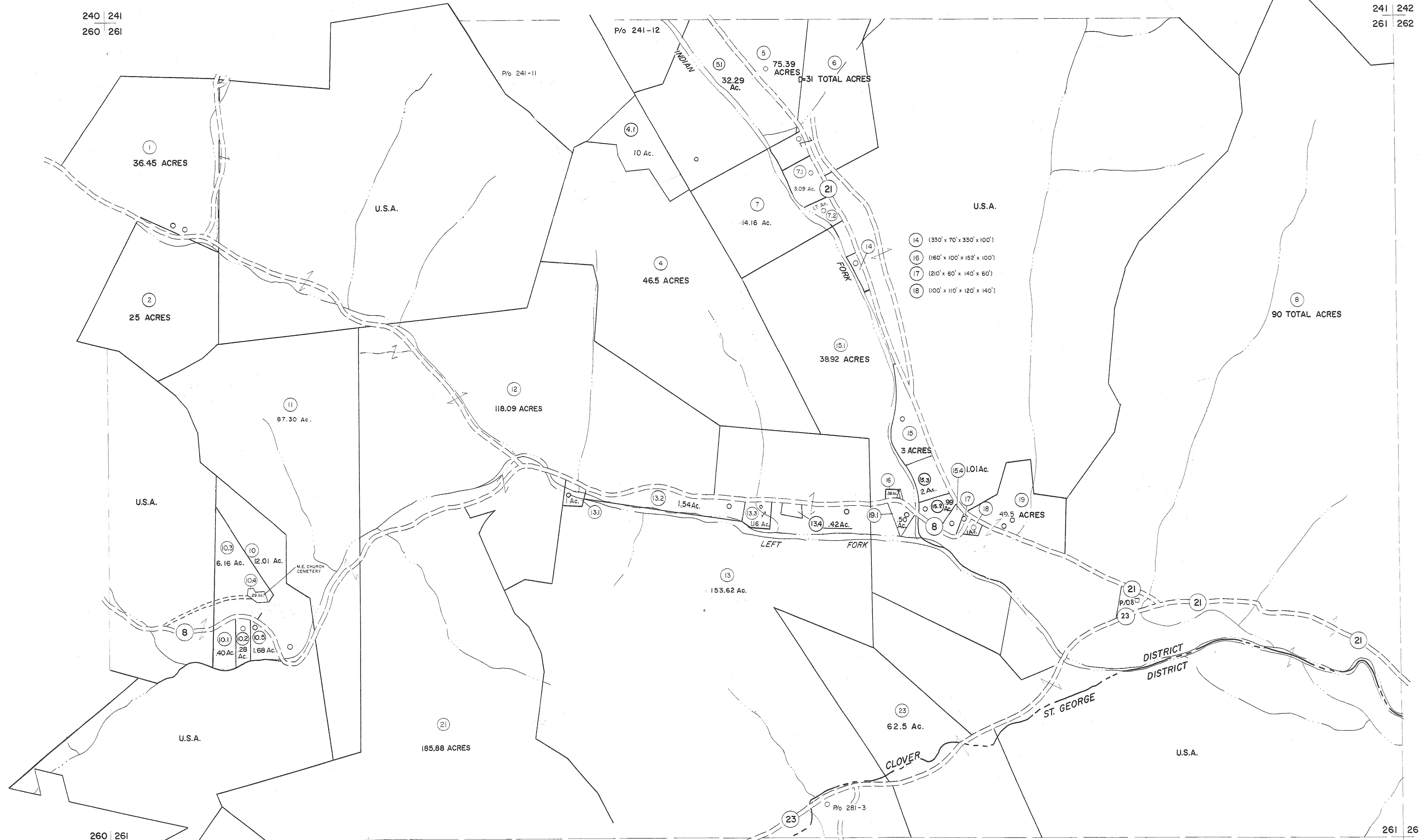


240 241
260 261

241 242
261 262



260 261
280 281

261 262
281 282

For Tax Purposes Only

Prepared by
MICHAEL BAKER, JR., INC.
Consulting Engineers
Rochester, Pennsylvania

Legend

Property line	—	Original lot line	—
Edge of pavement or roadway	—	Deed lot number	(15)
Corporation line	—	Parcel or index number	(99)
District line	—	Improvement	o
County line	—	Railroad	—

Revisions

1	GOLDEN	JUN 75	P.A.H.	9	OGIS	3-19-92	T.L.	17	SLS INC.	3/2/00	J.W.M.
2	JUN 75	T.G.		10	OGIS	1/26/93	DSH	18	ESI	2/8/02	REK
3	REVISED TO 7-1-85			11	OGIS	12/12/93	SAJ	19	ESI	2/20/03	REK
4	7-1-84			12	OGIS	2-95	HD	20	H&S	2/19/04	
5	REVISED			13	O.B.I.S.	4-1-96	J.E.B.	21		3/21/05	S.B.H.
6	JUN 1985			14	SLS INC.	- DDC	5/97	22		3/24/07	S.B.H.
7	REV. TO 3-1-89			15	SLS INC.	2/23/98	J.W.M.	23	F-B	10	H-K-S
8	OGIS	1/1/91	DSH	16	SLS INC.	1/27/99	DSW	24	F-B	13	H-K-S

5/27/15 S&H
KEY MAP

241
260 261 262
281

TUCKER COUNTY
STATE OF WEST VIRGINIA
Office of Assessor

DISTRICT CLOVER
ST. GEORGE

SHEET NO: 261

Date, Aerial Photography: November, 1961 Date, Map: Dec, 1962
Photo No: Scale: 1" = 400'