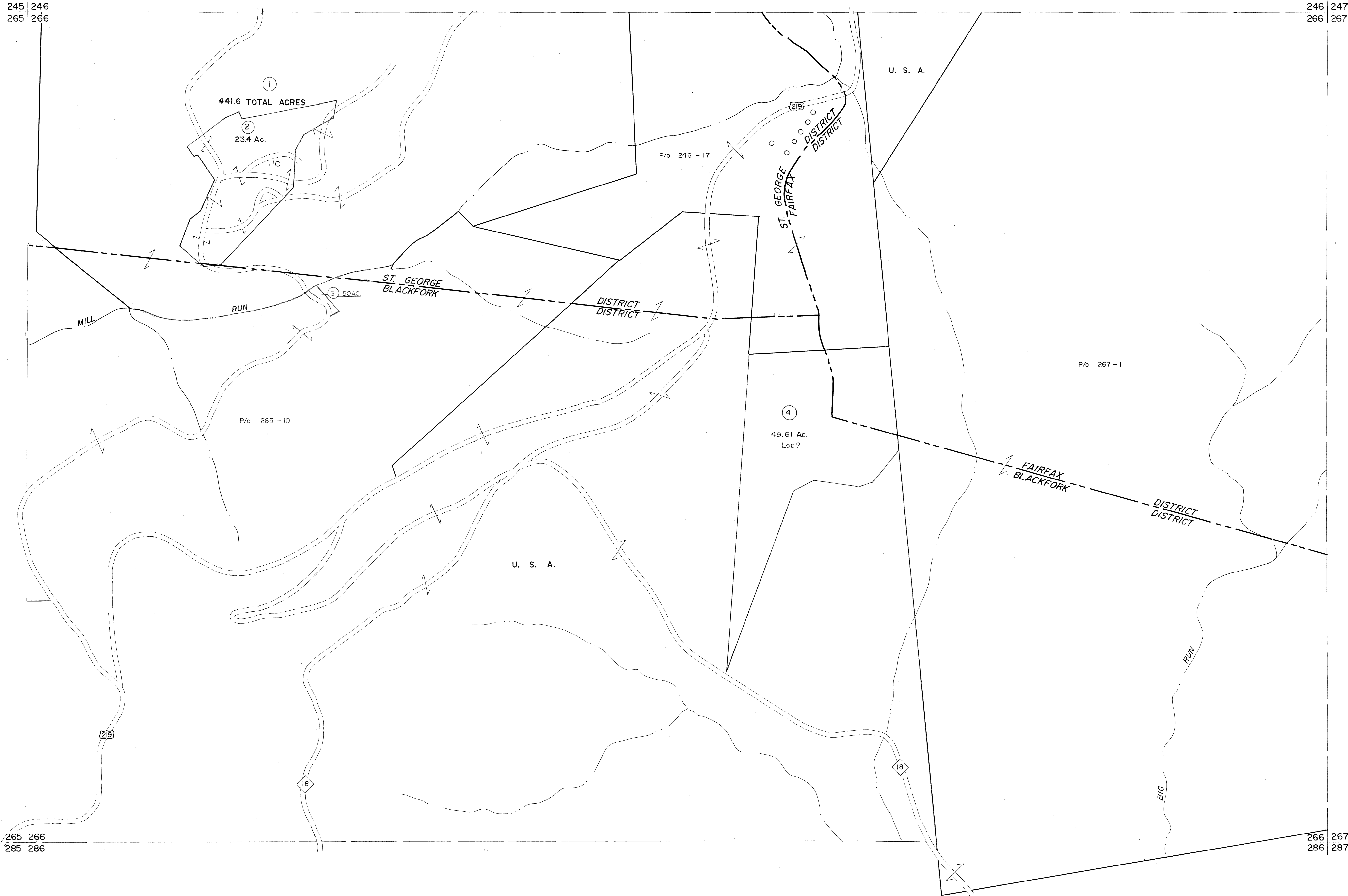


245 | 246
265 | 266

246 | 247
266 | 267



265 | 266
285 | 286

266 | 267
286 | 287

For Tax Purposes Only

Prepared by
MICHAEL BAKER, JR., INC.
Consulting Engineers
Rochester, Pennsylvania

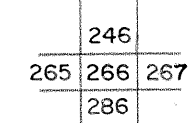
Legend

| | | | |
|-----------------------------|-------|------------------------|-------|
| Property line | ----- | Original lot line | ----- |
| Edge of pavement or roadway | ----- | Deed lot number | (15) |
| Corporation line | ----- | Parcel or index number | 99 |
| District line | ----- | Improvement | o |
| County line | ----- | Railroad | ----- |

Revisions

| | | | |
|---|--------------------|----|----|
| 1 | Original to 7-1-88 | 9 | 17 |
| 2 | Revised to 7-1-87 | 10 | 18 |
| 3 | OGIS 1/1/91 DSH | 11 | 19 |
| 4 | OGIS 1/26/93 DSH | 12 | 20 |
| 5 | | 13 | 21 |
| 6 | | 14 | 22 |
| 7 | | 15 | 23 |
| 8 | | 16 | 24 |

KEY MAP



TUCKER COUNTY
STATE OF WEST VIRGINIA
Office of Assessor

DISTRICT

ST. GEORGE
BLACKFORK
FAIRFAX

SHEET NO: 266

Date, Aerial Photography: November, 1961 Date, Map: Dec., 1962
Photo No: Scale: 1" = 400'