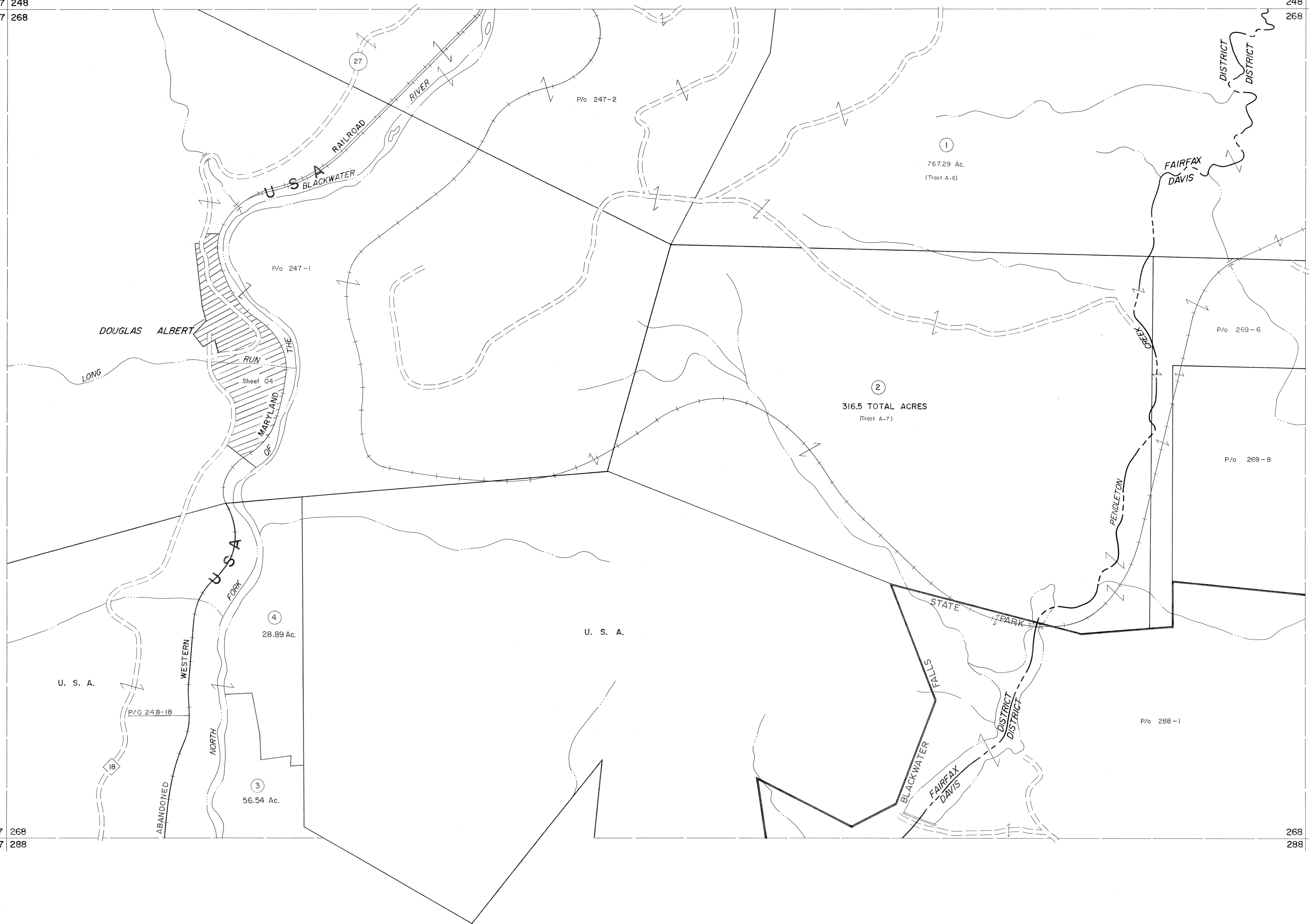


247 248
267 268

248 249
268 269

267 268
287 288

268 269
288 289



For Tax Purposes Only

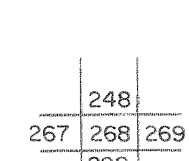
Prepared by
MICHAEL BAKER, JR., INC.
Consulting Engineers
Rochester, Pennsylvania

Legend

Property line	Original lot line
Edge of pavement or roadway	Deed lot number
Corporation line	Parcel or index number
District line	Improvement
County line	Railroad

Revisions			
1	11-27-78	T.E.R.	9
2	Corrected 7-1-83		10
3	July, 1986	TRL	11
4	Rev. to 3-1-89	R.E.B.	12
5	OGIS 1/26/93	DSH	13
6	OGIS 12/12/93	SAJ	14
7	OGIS 2-95	HD	15
8	O.G.I.S. 4-1-96	J.E.B.	16
9	SLS INC. - DDC 5/97		17
10	SLS INC. 2/23/98	JWM	18
11	ESI 2/20/03	REK	19
	3/21/05	S & H	20
			21
			22
			23
			24

KEY MAP



TUCKER COUNTY
STATE OF WEST VIRGINIA
Office of Assessor

DISTRICT
FAIRFAX DAVIS

SHEET NO: 268

Date, Aerial Photography: November, 1961 Date, Map: Dec., 1962
Photo No: Scale: 1" = 400'