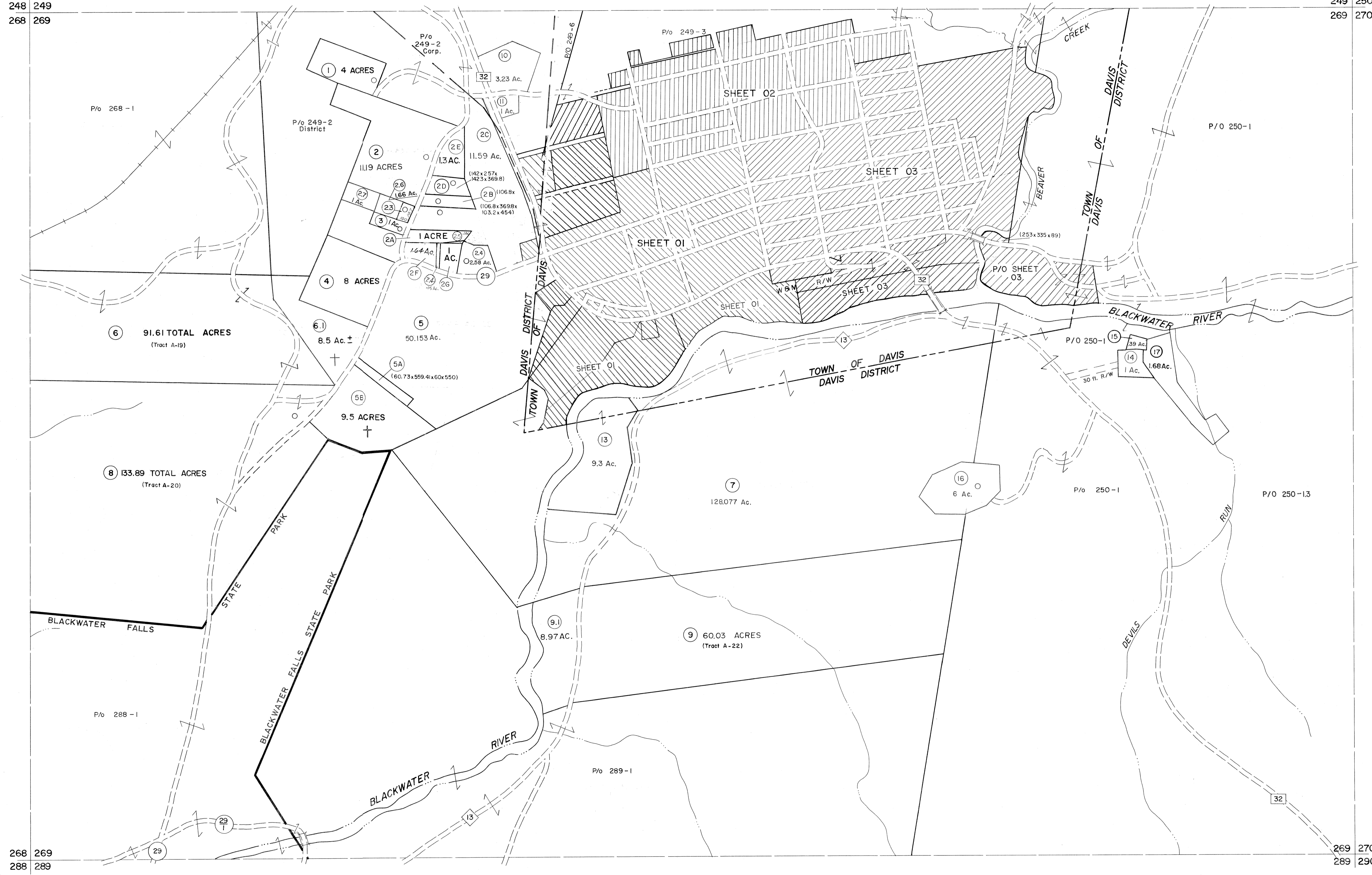


248 249  
268 269

249 250  
269 270



For Tax Purposes Only

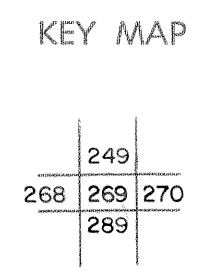
Prepared by  
MICHAEL BAKER, JR., INC.  
Consulting Engineers  
Rochester, Pennsylvania

**Legend**

Property line	Original lot line	(15)
Edge of pavement or roadway	Deed lot number	(19)
Corporation line	Parcel or index number	
District line	Improvement	
County line	Railroad	

**Revisions**

1	10-3-63	9	OGIS	1/27/93	DSH	17	ESI	2/8/02	REK
2	11-78 BAH	10	OGIS	2-95	HD	18	ESI	2/20/03	REK
3	Revised 7-1-88	11	O.G.I.S	4-1-96	J.E.B	19	HBS	2/19/04	
4	Revised to	12	SLS INC.	DDC	5/97	20		3/24/07	S & H
5	July 1986	13	SLS INC.	2/23/98	JWM	21			
6	REV. TO 3-1-89	14	SLS INC.	1/27/99	DSW	22			
7	OGIS 1/1/91	15	SLS INC.	3/2/00	JWM	23			
8		16	ESI	1/31/01	REK	24			



TUCKER COUNTY  
STATE OF WEST VIRGINIA  
Office of Assessor

DISTRICT  
**DAVIS**

**SHEET NO: 269**

Date, Aerial Photography: November, 1961 Date, Map: Dec., 1962  
Photo No: Scale: 1" = 400'