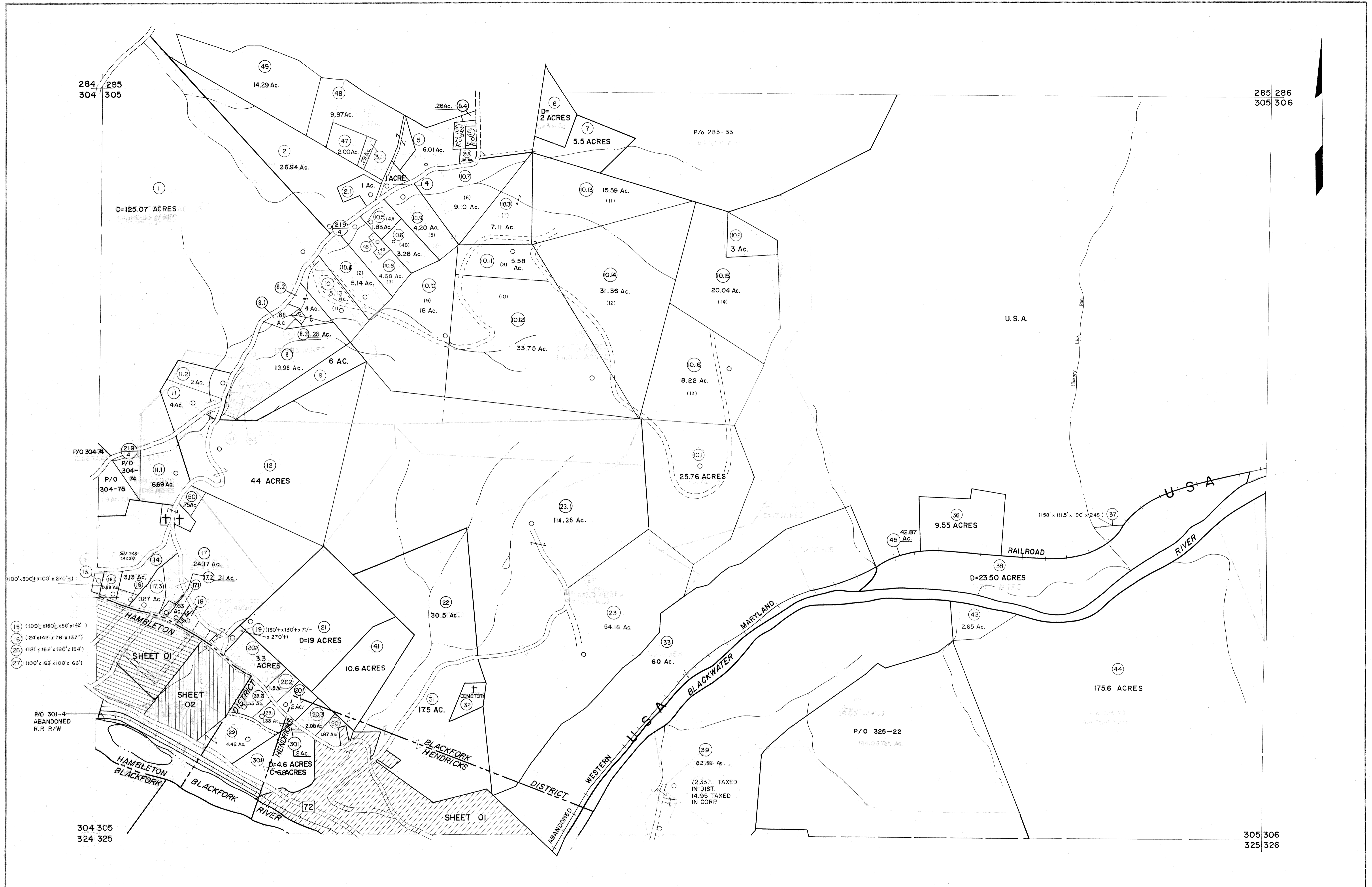


284 285  
304 305

285 286  
305 306



- (15) (100' x 150' x 50' x 142')
- (16) (124' x 142' x 78' x 137')
- (26) (181' x 165' x 180' x 154')
- (27) (100' x 168' x 100' x 166')

304 305  
324 325

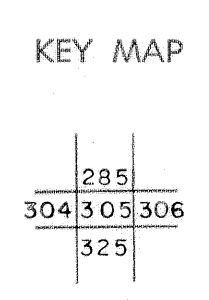
305 306  
325 326

For Tax Purposes Only

Prepared by  
MICHAEL BAKER, JR., INC.  
Consulting Engineers  
Rochester, Pennsylvania

Legend	
Property line	Original lot line
Edge of pavement or roadway	Deed lot number
Corporation line	Parcel or index number
District line	Improvement
County line	Railroad

Revisions			
1	10-3-63		
2	6-3-75		
3	11-26-78	BAH	
4	Revised to 7-1-83		
5	Revised to 7-1-85		
6	July, 1986	TRL	
7	Revised to 7-1-87		
8	Revised to 3-1-89	R.L.B.	
9	OGIS 1/4/91	DSH	
10	OGIS 3-19-92	TL	
11	OGIS 1/30/93	DSH	
12	OGIS 12/11/93	SAJ	
13	OGIS 2-95	HD	
14	O.G.I.S. 4-1-96	J.E.B.	
15	SLS INC. - DDC 5/97		
16	SLS INC. 3/3/98	JWM	
17	SLS INC. 1/28/99	DSW	
18	SLS INC. 3/2/00	JWM	
19	ESI 2/1/01	REK	
20	ESI 2/20/02	REK	
21	H&S 2/19/04		
22	3/21/05	S&H	
23	3/24/07	S&H	
24			



TUCKER COUNTY  
STATE OF WEST VIRGINIA  
Office of Assessor

DISTRICT  
**BLACKFORK**

SHEET NO: 305

Date, Aerial Photography: November, 1961 Date, Map: Dec, 1962  
Photo No: Scale: 1" = 400'