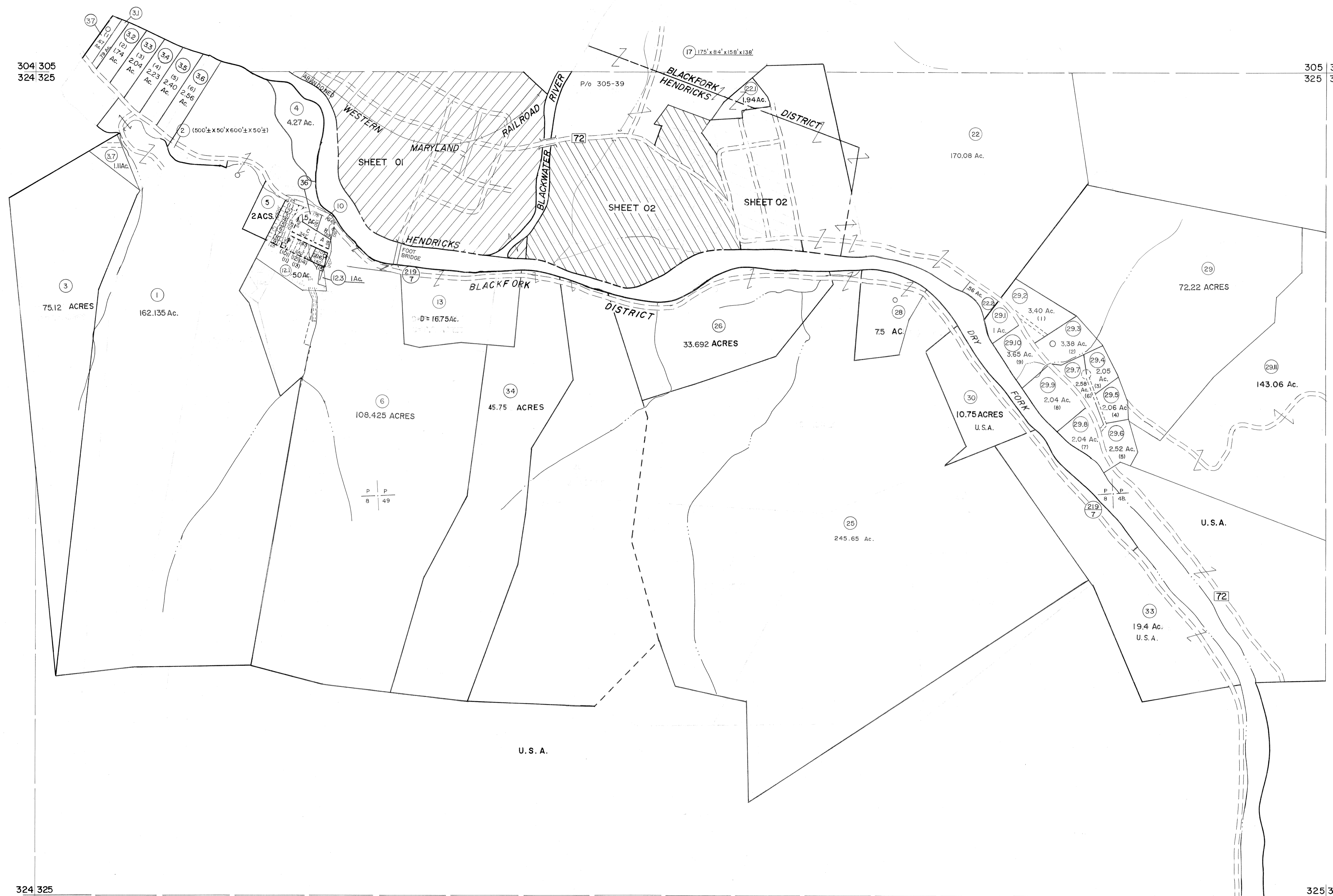


304 305  
324 325

305 306  
325 326

324 325  
344 345

325 326  
345 346



For Tax Purposes Only  
 Prepared by  
**MICHAEL BAKER, JR., INC.**  
 Consulting Engineers  
 Rochester, Pennsylvania

Legend	
Property line	Original lot line
Edge of pavement or roadway	Deed lot number
Corporation line	Parcel or index number
District line	Improvement
County line	Railroad

Revisions			
1	6-4-75	T.G.	9
2	11-78	BAH	10
3	Revised to 7-1-83		11
4	Revised to 7-1-87		12
5	July, 1986	TRL	13
6	Revised to 7-1-87		14
7	REV. TO 3-1-89	R.E.B.	15
8	OGIS 1/5/91	DSH	16
9	OGIS 3-19-92	TL	17
10	OGIS 1/30/93	DSH	18
11	OGIS 12/12/93	SAJ	19
12	OGIS 2-95	HD	20
13	O.G.I.S 4-1-96	J.E.B	21
14	SLS INC. - DDC 5/97		22
15	SLS INC. 3/3/98	JWM	23
16	SLS INC. 1/28/99	DSW	24

KEY MAP

**TUCKER COUNTY**  
 STATE OF WEST VIRGINIA  
 Office of Assessor

DISTRICT  
**BLACKFORK (HENDRICKS)**  
 SHEET NO: 325  
 Date, Aerial Photography: November 1961 Date, Map: Dec. 1962  
 Photo No: Scale: 1" = 400'