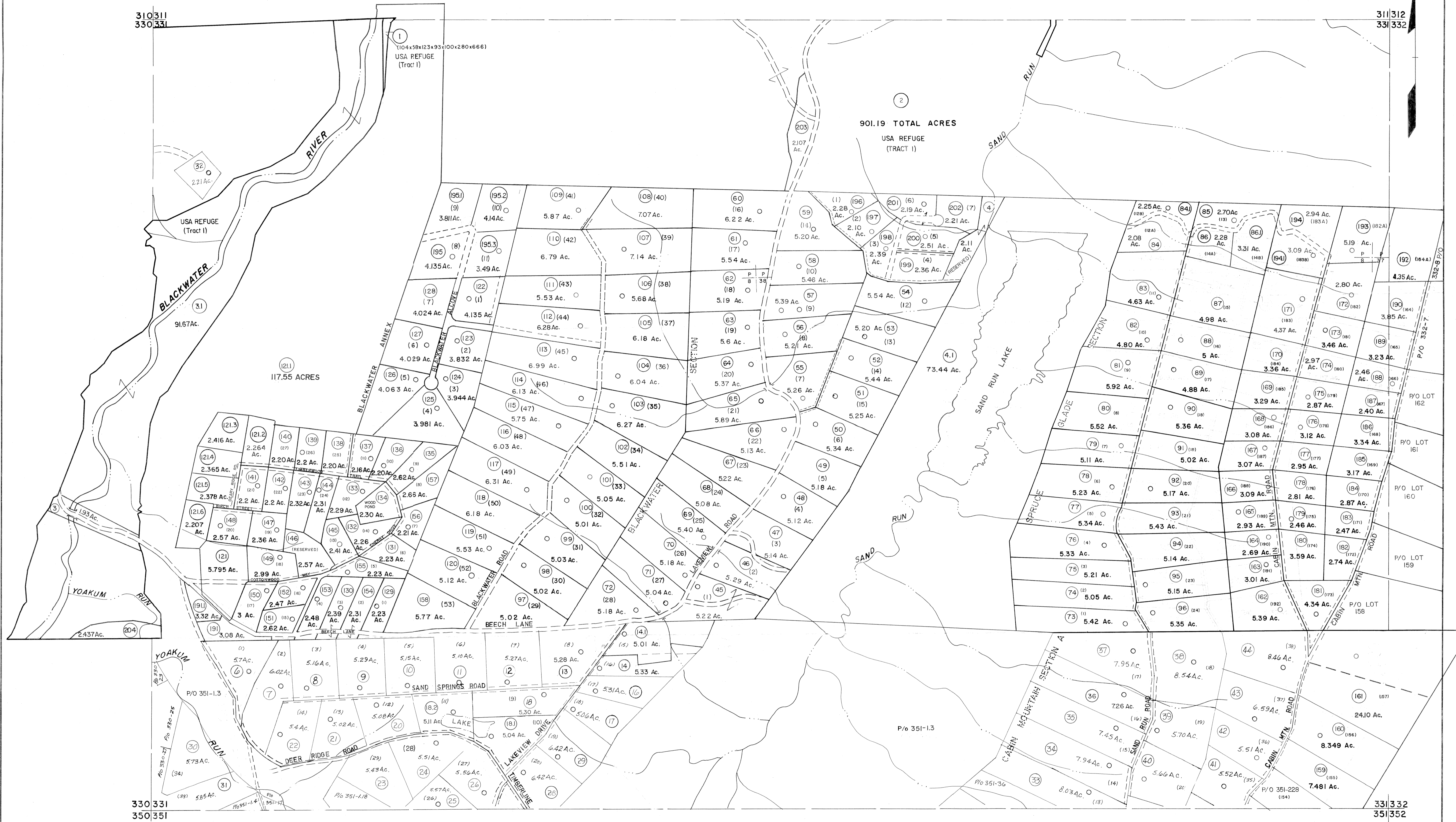


310311  
330331

311312  
331332



For Tax Purposes Only

Prepared by  
MICHAEL BAKER, JR., INC.  
Consulting Engineers  
Rochester, Pennsylvania

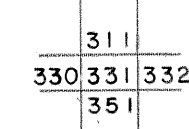
Legend

Property line	—	Original lot line	---
Edge of pavement or roadway	==	Deed lot number	(15)
Corporation line	----	Parcel or index number	(9)
District line	----	Improvement	o
County line	----	Railroad	—+—

Revisions

1	11-20-78	9	OGIS 2-95	HD	17	ESI 2/12/02	REK
2	Revised to 7-1-85	10	O.G.I.S 4-1-96	J.E.B	18	ESI 2/20/03	REK
3	7-1-84	11	SLS INC. - DDC 5/97		19	HBS 2/19/04	
4	REV. TO 3-1-89	12	SLS INC. 3/3/98	JWM	20	3/21/05	S&H
5	OGIS 1/5/91	13	SLS INC. 1/28/99	DSW	21	3/24/07	S&H
6	OGIS 3-19-92	14	SLS INC. 3/2/00	JWM	22		
7	OGIS 1/30/93	15	ESI 2/1/01	REK	23		
8	OGIS 12/12/93	16			24		

KEY MAP



TUCKER COUNTY  
STATE OF WEST VIRGINIA  
Office of Assessor

DISTRICT

DRY FORK

SHEET NO: 331

Date, Aerial Photography: November, 1961 Date, Map: Dec. 1962  
Photo No. Scale: 1" = 400'