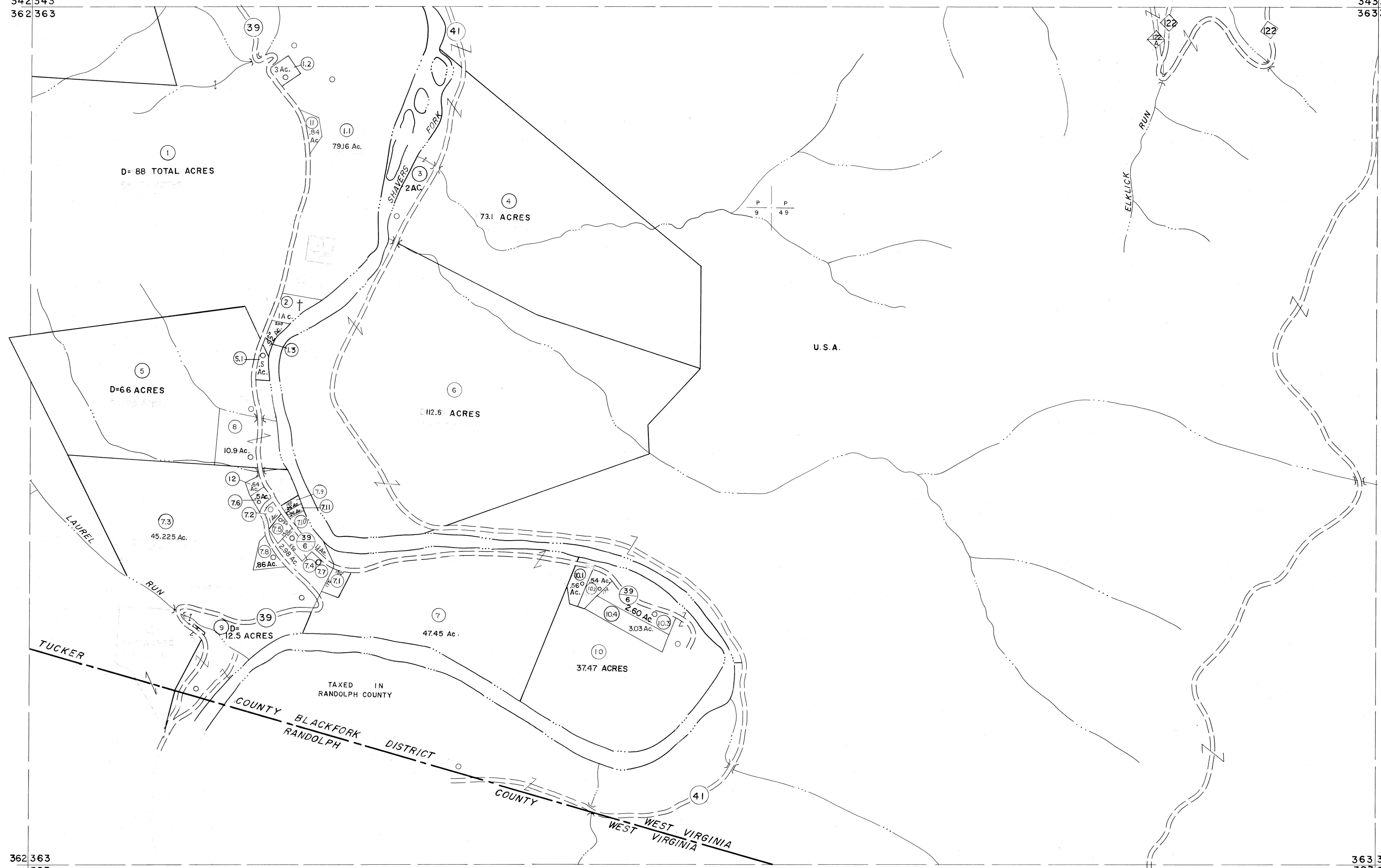


342343  
362363

343344  
363364



362363  
383

363364  
383384

**For Tax Purposes Only**

Prepared by  
**MICHAEL BAKER, JR., INC.**  
Consulting Engineers  
Rochester, Pennsylvania

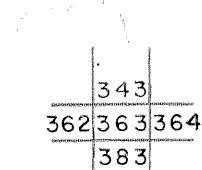
**Legend**

Property line	—————	Original lot line	-----
Edge of pavement or roadway	-----	Deed lot number	(15)
Corporation line	-----	Parcel or index number	(39)
District line	-----	Improvement	o
County line	-----	Railroad	—+—

**Revisions**

No.	Date	By	Description
1	6-3-75	JC	OGIS 12/12/93 SAJ 17
2	11/22/78	DG	SLS INC. - DDC 5/97 18
3	Revised to 7-1-88	DSH	ES1 2/2/01 REK 19
4	7-1-84	L.E.S.	3/28/06 S&H 20
5	Revised to 7-1-87	RE.B.	14 21
6	Rev. to 3-1-89	RE.B.	14 22
7	OGIS 1/6/91	DSH	15 23
8	OGIS 3-19-92	TL	16 24

**KEY MAP**



**TUCKER COUNTY**

STATE OF WEST VIRGINIA

Office of Assessor

DISTRICT

**BLACKFORK**

**SHEET NO: 363**

Date, Aerial Photography: November, 1961 Date, Map: Dec, 1962  
Photo No: Scale: 1" = 400'