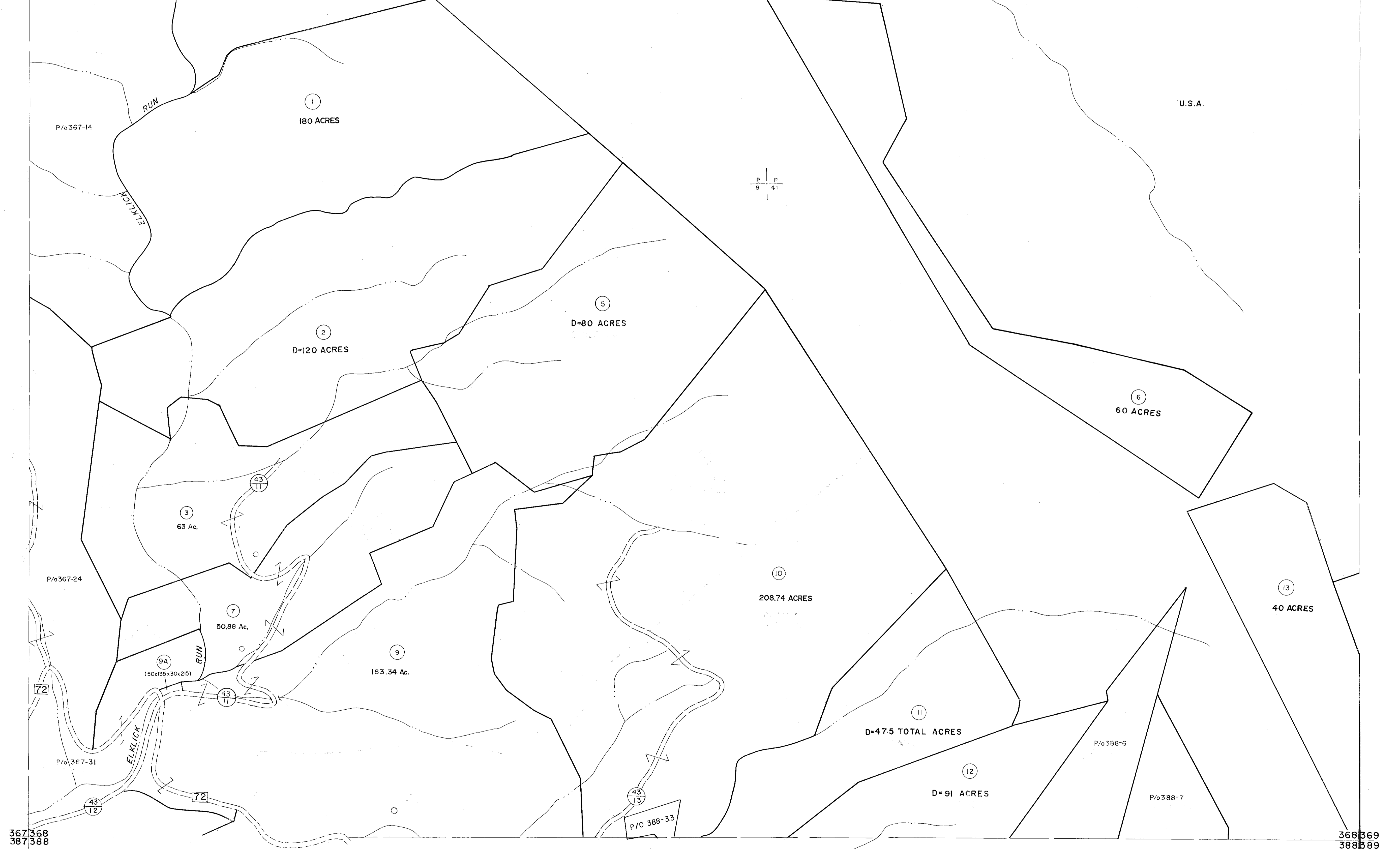


347 348
367 368

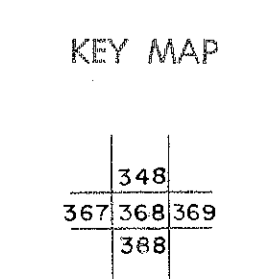
348 349
368 369



For Tax Purposes Only
 Prepared by
MICHAEL BAKER, JR., INC.
 Consulting Engineers
 Rochester, Pennsylvania

Legend	
Property line	Original lot line
Edge of pavement or roadway	Deed lot number
Corporation line	Parcel or index number
District line	Improvement
County line	Railroad

Revisions			
1	11/22/78	DG	9
2	Revised 2/1/85		10
3	1/16/91	DSH	11
4	OGIS 1/6/91	DSH	12
5	OGIS 12/12/93	SAJ	13
6	OGIS 2-95	HD	14
7	O.G.I.S. 4-1-96	J.E.B.	15
8	SLS INC. - DDC 5/97		16



TUCKER COUNTY
 STATE OF WEST VIRGINIA
 Office of Assessor

DISTRICT **DRY FORK**
SHEET NO: 368
 Date, Aerial Photography: November, 1961 Date, Map: Dec, 1962
 Photo No: Scale: 1" = 400'