

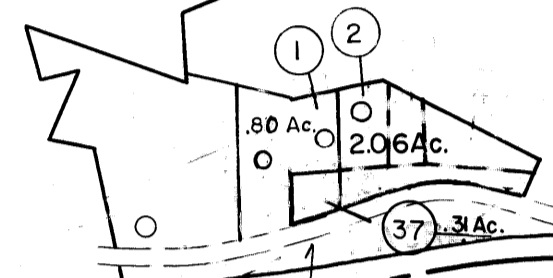
410 411
430 431

411 412
431 432

P/ 371-3

U.S.A.

U.S.A.

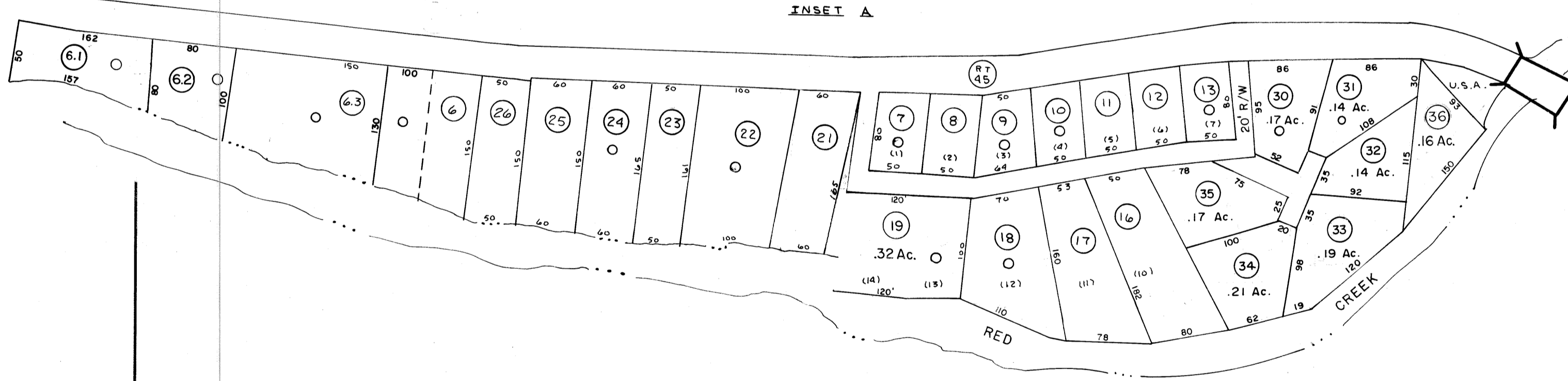


P/ 430-21.1

29
13.45 Ac.

51
.54 Ac.

INSET A



(LOC?)

28 .75 Ac.

DRY FORK DISTRICT
TUCKER COUNTY
RANDOLPH COUNTY

WEST VIRGINIA
WEST VIRGINIA

430 431

431 432

For Tax Purposes Only

Prepared by
MICHAEL BAKER, JR., INC.
Consulting Engineers
Rochester, Pennsylvania

Legend

| | | | |
|-----------------------------|-------|------------------------|-------|
| Property line | ————— | Original lot line | ----- |
| Edge of pavement or roadway | ----- | Dead lot number | (15) |
| Corporation line | ----- | Parcel or index number | (99) |
| District line | ----- | Improvement | o |
| County line | ----- | Railroad | + |

Revisions

| | | | | | | | | | | |
|---|-------------------|--------|-----|----------|----------|--------|-----|-----|---------|-----|
| 1 | 6-5-75 | DC | 9 | OGIS | 3-19-92 | TL | 17 | ESI | 2/20/03 | REK |
| 2 | 11-27-78 | Da | 10 | OGIS | 2/1/93 | DSH | 18 | | | |
| 3 | REV. TO 7-1-83 | NCS | 11 | OGIS | 12/12/93 | SAJ | 19 | | | |
| 4 | Revised to 7-1-87 | | 12 | OGIS | 2-95 | HD | 20 | | | |
| 5 | July, 1986 | TRL | 13 | O.G.I.S | 4-1-96 | J.E.B | 21 | | | |
| 6 | Revised to 7-1-87 | | 14 | SLS INC. | 1/28/99 | DSW | 22 | | | |
| 7 | REV. TO 3-1-89 | R.E.B. | 15 | SLS INC. | 3/03/00 | JAW | 23 | | | |
| 8 | OGIS | 1/6/91 | DSH | 16 | ESI | 2/2/01 | REK | 24 | | |

KEY MAP



TUCKER COUNTY

STATE OF WEST VIRGINIA

Office of Assessor

DISTRICT

DRY FORK

SHEET NO: 431

Date, Aerial Photography: Nov. 1961
Photo No: Date, Map: Dec. 1962
Scale: 1" = 400'